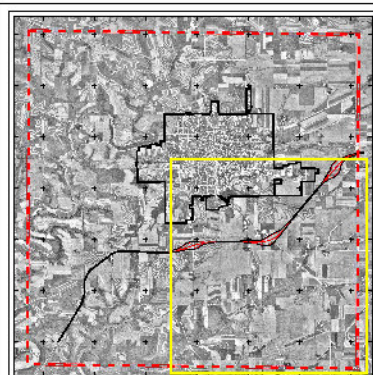


City and Town of Platteville Land Cover (Figure 3D)



Legend

<ul style="list-style-type: none"> Wetland Rock Outcrop Excavated Pond (<5 Acres) Dammed Pond (<5 Acres) Stream or River AES Study Location City Boundary Park or Open Space Township Boundary 	<p>Agricultural Lands</p> <ul style="list-style-type: none"> Agricultural Lands (Not Delineated) <p>Forested Communities</p> <ul style="list-style-type: none"> 2a Historic Oak Savannah with grazed, mowed, or old-field understorey (3,142.2 Acres) 2b Historic Oak Savannah with recently developed closed canopy (2,906.1 Acres) 2c Dry Mesic Oak Forest (940.5 Acres) 2d Recently Developed Woodlands (114.8 Acres) <p>Wetland Communities</p> <ul style="list-style-type: none"> 3a Emergent/Wet Meadow (269.4 Acres) 3b Forested Wetland (16.7 Acres) 3c Open Pastured/Unpastured Drainage Way with Wetland Inclusions (15.6 Acres) 	<p>Remnant and Restored Prairie</p> <ul style="list-style-type: none"> 4a Remnant Native Prairie (13.9 Acres) 4b Prairie Restoration (20.4 Acres) 4c CRP Planting/Re-forestation (143.4 Acres) <p>Note: Map has been prepared in conjunction with the Platteville Comprehensive Smart Growth Plan.</p> <div style="text-align: center;"> <p>0 0.5 Miles</p> </div>
--	---	---