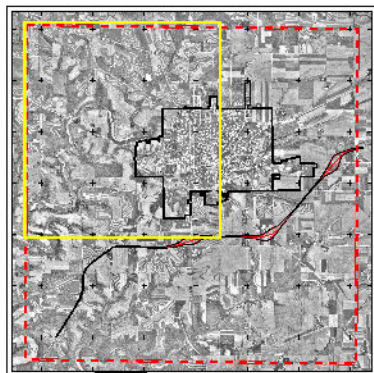


**City and Town of Platteville Land Cover** (Figure 3A)



- Wetland
- Rock Outcrop
- Excavated Pond (<5 Acres)
- Dammed Pond (<5 Acres)
- Stream or River
- AES Study Location
- City Boundary
- Park or Open Space
- Township Boundary

**Legend**

- Agricultural Lands**
    - Agricultural Lands (Not Delineated)
  - Forested Communities**
    - 2a Historic Oak Savanna with grazed, mowed, or old-field understorey (3,142.2 Acres)
    - 2b Historic Oak Savanna with recently developed closed canopy (2,808.1 Acres)
    - 2c Dry Mesic Oak Forest (940.5 Acres)
    - 2d Recently Developed Woodlands (114.6 Acres)
  - Wetland Communities**
    - 3a Emergent/Wet Meadow (269.4 Acres)
    - 3b Forested Wetland (16.7 Acres)
    - 3c Open Pastured/Unpastured Drainage Way with Wetland Inclusions (15.6 Acres)
  - Remnant and Restored Prairie**
    - 4a Remnant Native Prairie (13.9 Acres)
    - 4b Prairie Restoration (20.4 Acres)
    - 4c CRP Planting/Re-forestation (143.4 Acres)
- Note: Map has been prepared in conjunction with the Platteville Comprehensive Smart Growth Plan.

