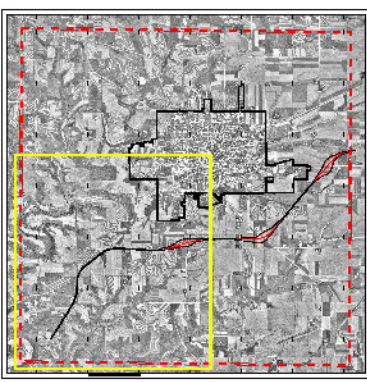


City and Town of Platteville Land Cover (Figure 3C)



Legend

<ul style="list-style-type: none"> Wetland Rock Outcrop Excavated Pond (<5 Acres) Dammed Pond (<5 Acres) Stream or River AES Study Location City Boundary Park or Open Space Township Boundary 	<ul style="list-style-type: none"> Agricultural Lands Agricultural Lands (Not Delineated) Forested Communities 2a Historic Oak Savannah with grazed, mowed, or old-field understorey (3,142.2 Acres) 2b Historic Oak Savannah with recently developed closed canopy (2,908.1 Acres) 2c Dry Mastic Oak Forest (940.5 Acres) 2d Recently Developed Woodlands (114.0 Acres) Wetland Communities 3a Emergent/Wet Meadow (260.4 Acres) 3b Forested Wetland (18.7 Acres) 3c Open Pastured/Unpastured Drainage Way with Wetland Inclusions (15.6 Acres) 	<ul style="list-style-type: none"> Remnant and Restored Prairies 1a Remnant Native Prairie (13.9 Acres) 4b Prairie Restoration (20.4 Acres) 4c CRP Planting/Re-forestation (143.4 Acres) <p>Note: Map has been prepared in conjunction with the Platteville Comprehensive Smart Growth Plan.</p> <div style="text-align: center;"> <p>0 0.5 Miles</p> </div>
--	--	--