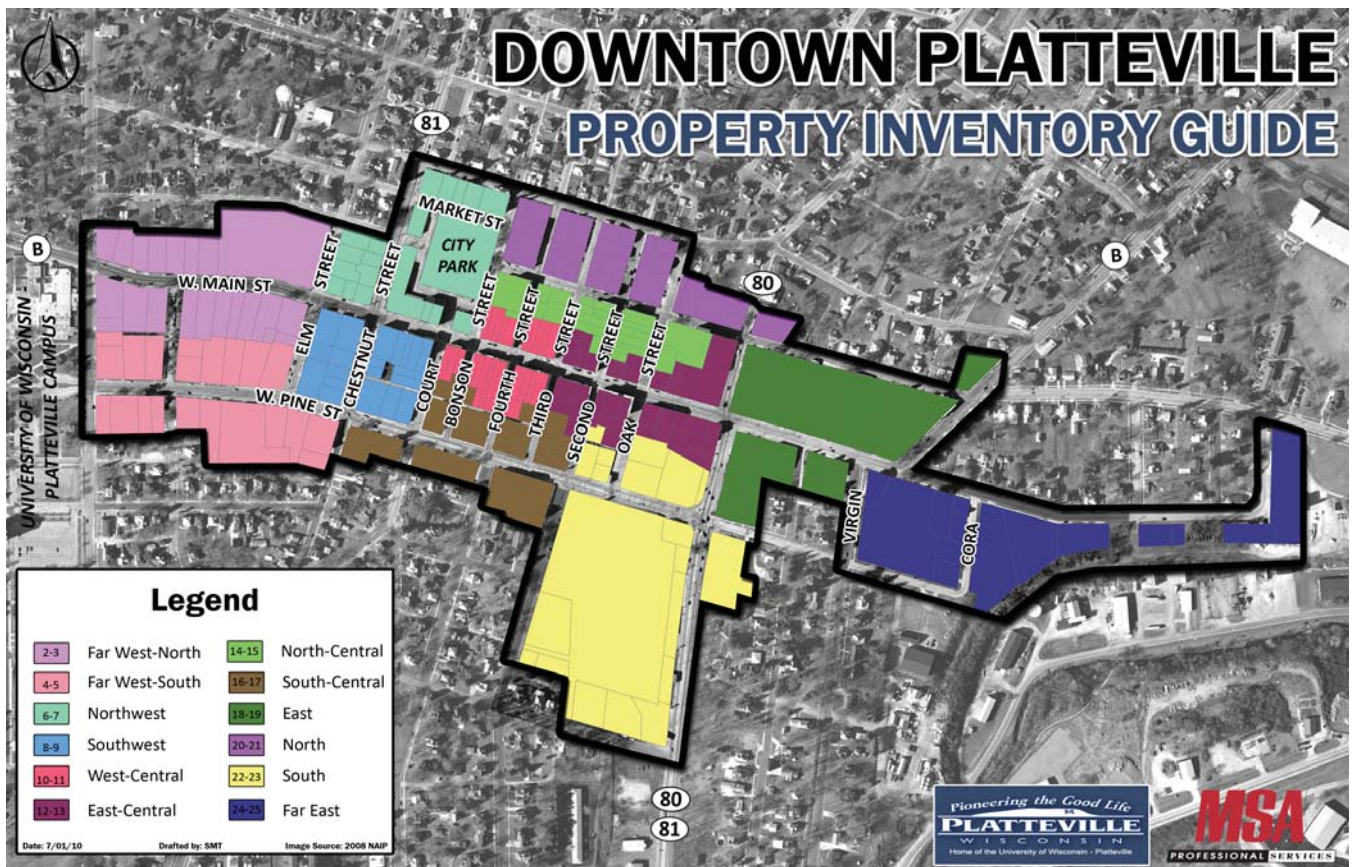


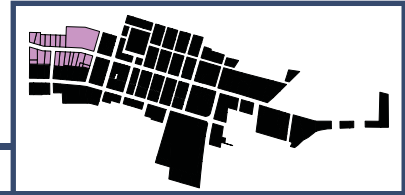
# APPENDIX A

## PROPERTY INVENTORY

2-3	Far West - North	12-13	East - Central	22-23	South
4-5	Far West - South	14-15	North - Central	24-25	Far East
6-7	Northwest	16-17	South - Central		
8-9	Southwest	18-19	East		
10-11	West - Central	20-21	North		



The Property Inventory provides information, including address, assessed values (land and improvements) and approximate acreage, for every property within the downtown planning area. For this purpose of this inventory list, the downtown planning area was broken down into eleven sections. Individual parcels can be found in the corresponding page listed in the map above.



# Far West-North Section



1

**590 W. Main Street**  
 Land Value: \$21,100  
 Imp. Value: \$125,500  
 Area: 0.24 acres



2

**560 W. Main Street**  
 Land Value: \$16,300  
 Imp. Value: \$80,900  
 Area: 0.23 acres



3

**530 W. Main Street**  
 Land Value: \$15,400  
 Imp. Value: \$119,800  
 Area: 0.20 acres



4

**520 W. Main Street**  
 Land Value: \$18,000  
 Imp. Value: \$104,900  
 Area: 0.24 acres

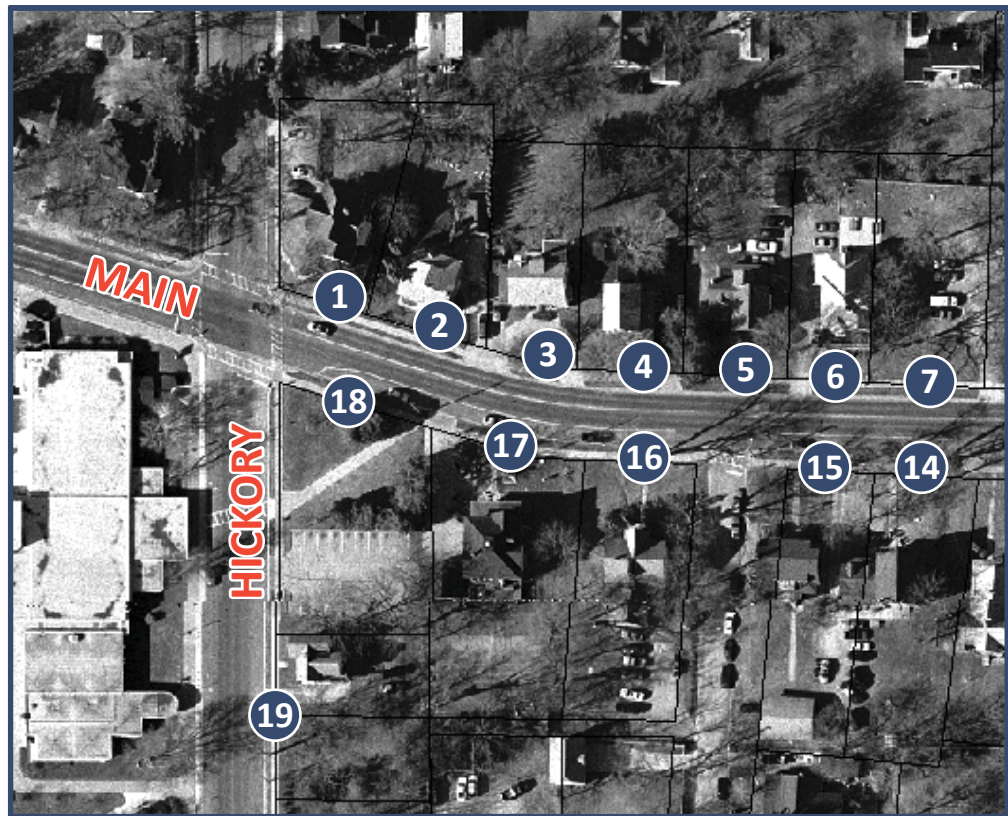


Image Source: 2008



19

**55-75 S. Hickory St.**  
 Land Value: *n.a.*  
 Imp. Value: *n.a.*  
 Area: 0.26 acres



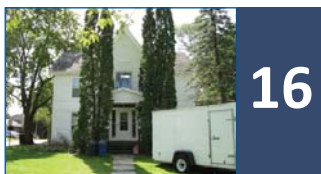
18

**#\_7360000**  
 Land Value: *n.a.*  
 Imp. Value: *n.a.*  
 Area: 0.35 acres



17

**555 W. Main Street**  
 Land Value: \$25,100  
 Imp. Value: \$145,800  
 Area: 0.39 acres



16

**515 W. Main Street**  
 Land Value: \$24,600  
 Imp. Value: \$92,200  
 Area: 0.29 acres



15

**485 W. Main Street**  
 Land Value: \$16,100  
 Imp. Value: \$132,900  
 Area: 0.25 acres

Photos Taken: August 2009

Parcel Information: 2009 City Assessments



**500 W. Main Street**  
 Land Value: \$18,100  
 Imp. Value: \$87,300  
 Area: 0.24 acres



**470 W. Main Street**  
 Land Value: \$14,300  
 Imp. Value: \$164,000  
 Area: 0.91 acres



**430 W. Main Street**  
 Land Value: \$16,300  
 Imp. Value: \$0  
 Area: 0.29 acres



**30 N. Elm Street**  
 Land Value: \$240,500  
 Imp. Value: \$1,031,700  
 Area: 2.48 acres



**315 W. Main Street**  
 Land Value: \$25,500  
 Imp. Value: \$273,000  
 Area: 0.28 acres



**345 W. Main Street**  
 Land Value: \$23,400  
 Imp. Value: \$163,300  
 Area: 0.31 acres



**455 W. Main Street**  
 Land Value: \$19,400  
 Imp. Value: \$81,000  
 Area: 0.53 acres



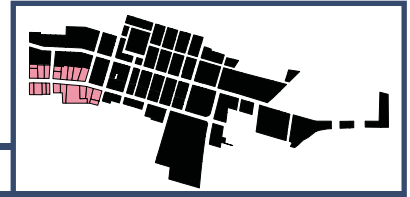
**435 W. Main Street**  
 Land Value: \$16,900  
 Imp. Value: \$115,700  
 Area: 0.25 acres



**405 W. Main Street**  
 Land Value: \$12,100  
 Imp. Value: \$126,000  
 Area: 0.17 acres



**385 W. Main Street**  
 Land Value: \$17,800  
 Imp. Value: \$140,000  
 Area: 0.26 acres



# Far West-South Section



1

**75 S. Hickory Street**  
 Land Value: *n.a.*  
 Imp. Value: *n.a.*  
 Area: 0.13 acres



2

**480 W. Pine Street**  
 Land Value: *n.a.*  
 Imp. Value: *n.a.*  
 Area: 0.31 acres



3

**440 W. Pine Street**  
 Land Value: \$21,400  
 Imp. Value: \$73,800  
 Area: 0.33 acres



4

**410 W. Pine Street**  
 Land Value: \$21,900  
 Imp. Value: \$103,500  
 Area: 0.27 acres

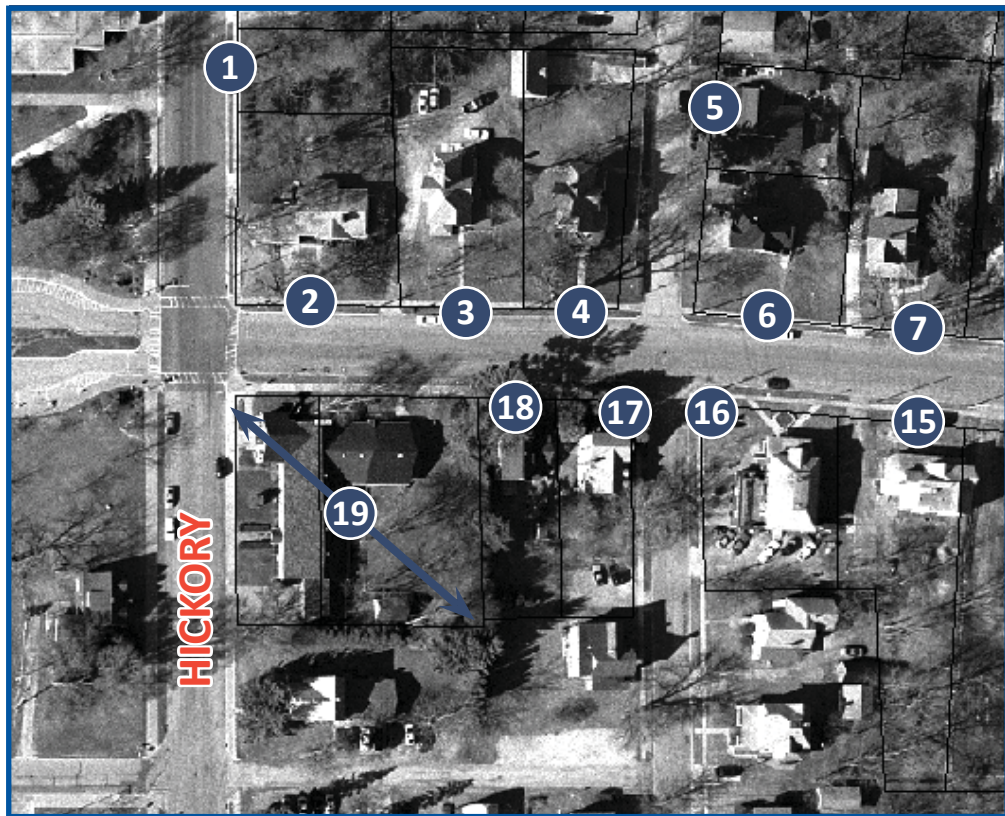


Image Source: 2008



19

**135 S. Hickory Street**  
 Land Value: *n.a.*  
 Imp. Value: *n.a.*  
 Area: 0.56 acres



18

**435 W. Pine Street**  
 Land Value: \$13,500  
 Imp. Value: \$68,100  
 Area: 0.17 acres



17

**405 W. Pine Street**  
 Land Value: \$13,500  
 Imp. Value: \$87,500  
 Area: 0.16 acres



16

**385 W. Pine Street**  
 Land Value: \$21,500  
 Imp. Value: \$129,600  
 Area: 0.25 acres



15

**365 W. Pine Street**  
 Land Value: \$15,800  
 Imp. Value: \$121,400  
 Area: 0.35 acres

Photos Taken: August 2009

Parcel Information: 2009 City Assessments



**5**

**65 Bradford Street**  
 Land Value: \$14,600  
 Imp. Value: \$93,400  
 Area: 0.15 acres



**6**

**390 W. Pine Street**  
 Land Value: \$15,000  
 Imp. Value: \$96,100  
 Area: 0.21 acres



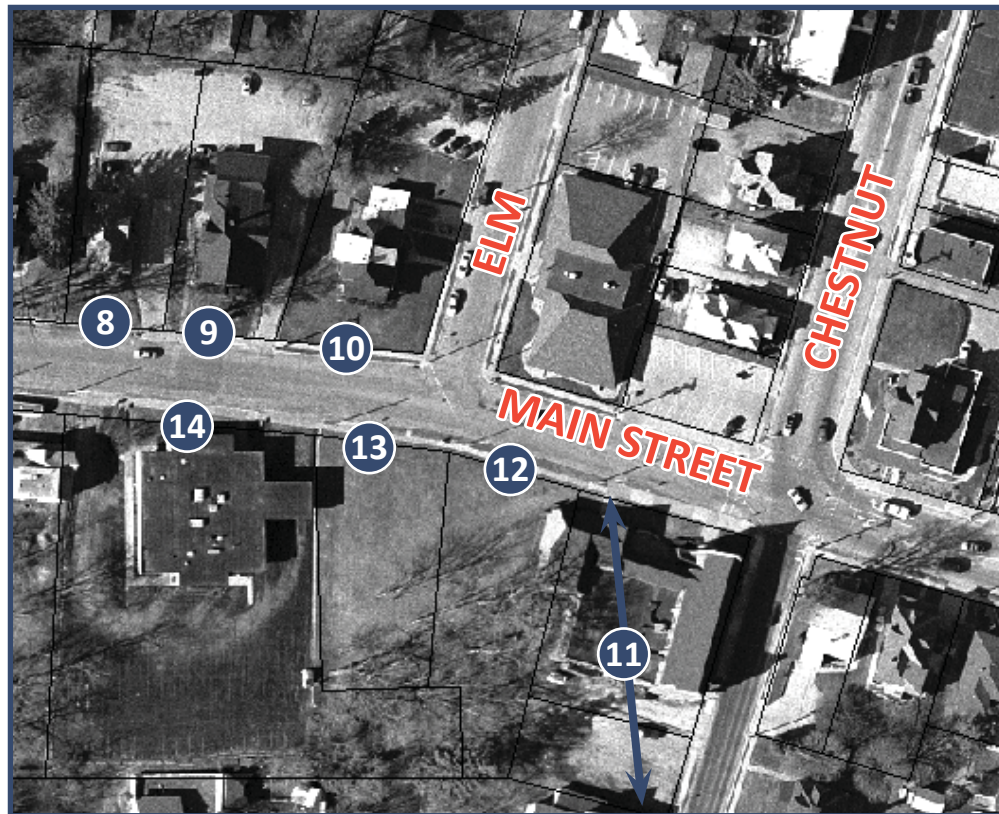
**7**

**370 W. Pine Street**  
 Land Value: \$22,800  
 Imp. Value: \$137,400  
 Area: 0.34 acres



**8**

**350 W. Pine Street**  
 Land Value: \$19,800  
 Imp. Value: \$106,700  
 Area: 0.29 acres



**9**

**330 W. Pine Street**  
 Land Value: \$62,300  
 Imp. Value: \$313,300  
 Area: 0.37 acres



**10**

**80 S. Elm Street**  
 Land Value: \$27,000  
 Imp. Value: \$125,900  
 Area: 0.39 acres



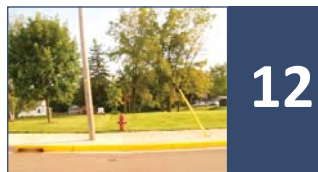
**14**

**345 W. Pine Street**  
 Land Value: \$172,300  
 Imp. Value: \$964,600  
 Area: 1.00 acres



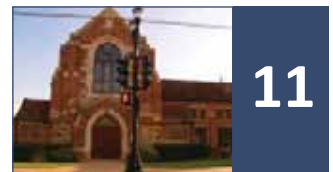
**13**

**305 W. Pine Street**  
 Land Value: \$22,000  
 Imp. Value: \$0  
 Area: 0.30 acres



**12**

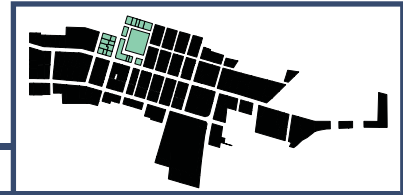
**275 W. Pine Street**  
 Land Value: *n.a.*  
 Imp. Value: *n.a.*  
 Area: 0.31 acres



**11**

**215 W. Pine Street\***  
 Land Value: *n.a.*  
 Imp. Value: *n.a.*  
 Area: 0.51 acres

\* includes 150 S. Chestnut St.



# Northwest Section



Image Source: 2008



13

**80 W. Main Street**  
 Land Value: \$34,600  
 Imp. Value: \$89,000  
 Area: 0.14 acres



14

**110 Market Street**  
 Land Value: *n.a.*  
 Imp. Value: *n.a.*  
 Area: 0.15 acres



15

**80 Market Street**  
 Land Value: *n.a.*  
 Imp. Value: *n.a.*  
 Area: 0.23 acres



16

**130 Market Street**  
 Land Value: \$8,400  
 Imp. Value: \$88,400  
 Area: 0.09 acres

**Photos Taken: August 2009**

**Parcel Information: 2009 City Assessments**



**1**

**40 N. Chestnut Street**  
 Land Value: \$39,500  
 Imp. Value: \$179,300  
 Area: 0.13 acres



**2**

**50 N. Chestnut Street**  
 Land Value: \$25,000  
 Imp. Value: \$4,200  
 Area: 0.09 acres



**3**

**80 N. Chesnut Street**  
 Land Value: \$22,900  
 Imp. Value: \$82,000  
 Area: 0.10 acres



**4**

**275 W. Mineral Street**  
 Land Value: \$18,900  
 Imp. Value: \$156,700  
 Area: 0.17 acres



**5**

**65 N. Elm Street**  
 Land Value: \$30,200  
 Imp. Value: \$239,800  
 Area: 0.15 acres



**6**

**35 N. Elm Street**  
 Land Value: \$26,800  
 Imp. Value: \$92,700  
 Area: 0.16 acres



**7**

**280 W. Main Street**  
 Land Value: \$30,200  
 Imp. Value: \$80,600  
 Area: 0.11 acres



**8**

**250 W. Main Street**  
 Land Value: \$26,300  
 Imp. Value: \$64,400  
 Area: 0.07 acres



**9**

**20 N. Chestnut Street**  
 Land Value: \$29,600  
 Imp. Value: \$75,700  
 Area: 0.11 acres



**10**

**170 W. Main Street**  
 Land Value: \$211,500  
 Imp. Value: \$1,000,000  
 Area: 0.51 acres



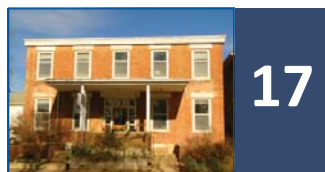
**11**

**120 W. Main Street**  
 Land Value: \$25,000  
 Imp. Value: \$99,100  
 Area: 0.05 acres



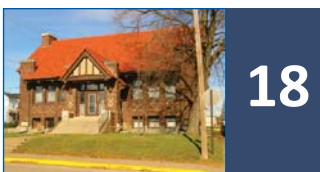
**12**

**110 W. Main Street**  
 Land Value: \$34,300  
 Imp. Value: \$244,900  
 Area: 0.08 acres



**17**

**150 Market Street**  
 Land Value: \$22,100  
 Imp. Value: \$199,600  
 Area: 0.13 acres



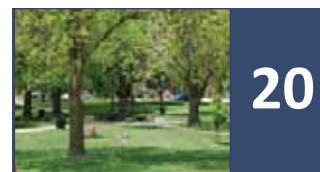
**18**

**190 Market Street**  
 Land Value: \$30,000  
 Imp. Value: \$133,000  
 Area: 0.17 acres



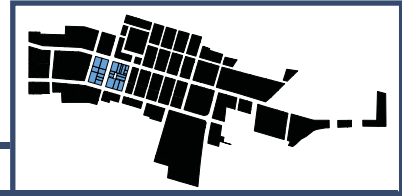
**19**

**100 Park Street**  
 Land Value: \$42,900  
 Imp. Value: \$459,900  
 Area: 0.17 acres



**20**

**City Park**  
 Land Value: n.a.  
 Imp. Value: n.a.  
 Area: 1.62 acres



# Southwest Section

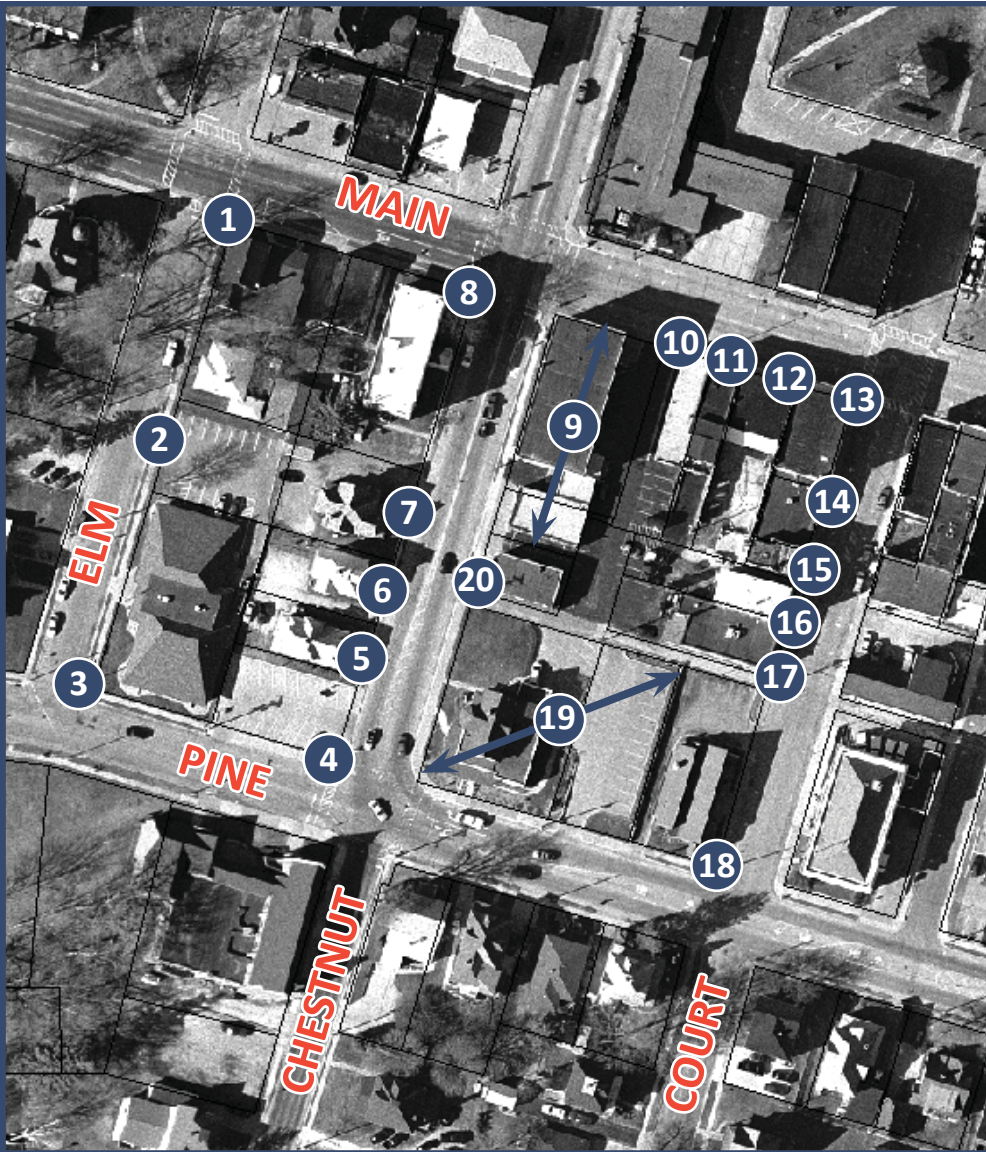


Image Source: 2008



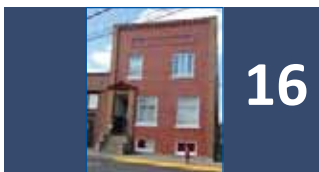
**295 W. Main Street**  
 Land Value: *n.a.*  
 Imp. Value: *n.a.*  
 Area: 0.26 acres



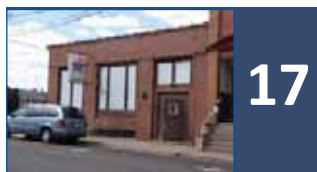
**60 S. Chestnut Street**  
 Land Value: \$8,400  
 Imp. Value: \$69,800  
 Area: 0.09 acres



**145 W. Main Street**  
 Land Value: \$25,300  
 Imp. Value: \$147,000  
 Area: 0.07 acres



**50 S. Court Street**  
 Land Value: \$19,800  
 Imp. Value: \$80,200  
 Area: 0.08 acres



**60 S. Court Street**  
 Land Value: *n.a.*  
 Imp. Value: *n.a.*  
 Area: 0.11 acres



**80 S. Court Street**  
 Land Value: \$76,200  
 Imp. Value: \$409,400  
 Area: 0.19 acres



**140-180 W. Pine St.\***  
 Land Value: \$79,900  
 Imp. Value: \$380,400  
 Area: 0.46 acres

\*prior to new construction



Photos Taken: August 2009

Parcel Information: 2009 City Assessments



**2**

**35 S. Elm Street**  
 Land Value: \$8,100  
 Imp. Value: \$101,100  
 Area: 0.13 acres



**3**

**65 S. Elm Street**  
 Land Value: *n.a.*  
 Imp. Value: *n.a.*  
 Area: 0.28 acres



**4**

**220 W. Pine Street**  
 Land Value: *n.a.*  
 Imp. Value: *n.a.*  
 Area: 0.12 acres



**5**

**70 S. Chestnut Street**  
 Land Value: \$19,800  
 Imp. Value: \$63,300  
 Area: 0.08 acres



**7**

**50 S. Chestnut Street**  
 Land Value: \$33,400  
 Imp. Value: \$84,700  
 Area: 0.14 acres



**8**

**215 W. Main Street**  
 Land Value: \$100,800  
 Imp. Value: \$427,000  
 Area: 0.27 acres



**9**

**175 W. Main Street**  
 Land Value: \$85,400  
 Imp. Value: \$155,400  
 Area: 0.23 acres



**10**

**155 W. Main Street**  
 Land Value: \$39,800  
 Imp. Value: \$31,200  
 Area: 0.11 acres



**12**

**135 W. Main Street**  
 Land Value: \$39,400  
 Imp. Value: \$48,900  
 Area: 0.12 acres



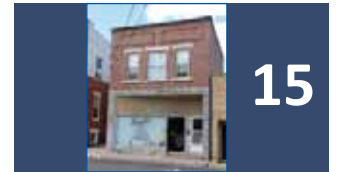
**13**

**115 W. Main Street**  
 Land Value: \$50,500  
 Imp. Value: \$217,800  
 Area: 0.06 acres



**14**

**20 S. Court St.**  
 Land Value: *n.a.*  
 Imp. Value: *n.a.*  
 Area: 0.04 acres



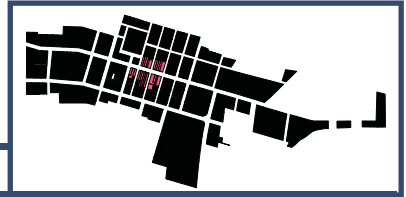
**15**

**28 S. Court Street**  
 Land Value: \$17,500  
 Imp. Value: \$52,900  
 Area: 0.02 acres



**20**

**45 S. Chestnut Street**  
 Land Value: \$19,800  
 Imp. Value: \$84,100  
 Area: 0.06 acres



# West-Central Section



Image Source: 2008



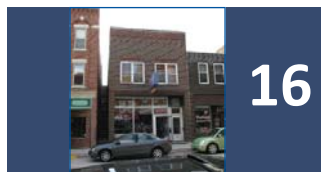
**70 W. Main Street**  
 Land Value: \$26,800  
 Imp. Value: \$218,700  
 Area: 0.06 acres



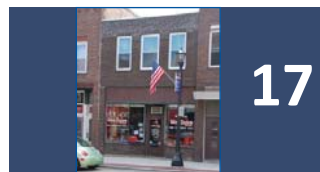
**10 E. Main Street**  
 Land Value: \$26,800  
 Imp. Value: \$168,600  
 Area: 0.08 acres



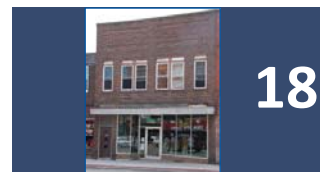
**55 E. Main Street**  
 Land Value: \$53,000  
 Imp. Value: \$458,600  
 Area: 0.13 acres



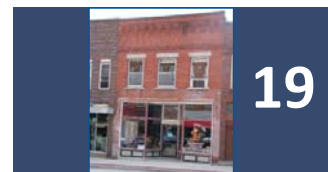
**25 W. Main Street**  
 Land Value: \$22,100  
 Imp. Value: \$106,500  
 Area: 0.10 acres



**35 W. Main Street**  
 Land Value: \$21,900  
 Imp. Value: \$41,400  
 Area: 0.08 acres



**45 W. Main Street**  
 Land Value: \$31,700  
 Imp. Value: \$125,200  
 Area: 0.08 acres



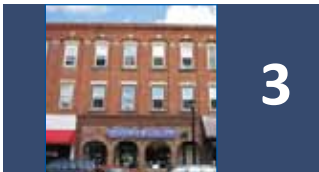
**55 W. Main Street**  
 Land Value: \$26,800  
 Imp. Value: \$126,600  
 Area: 0.07 acres

Photos Taken: August 2009

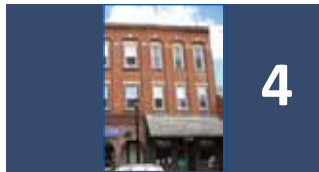
Parcel Information: 2009 City Assessments



**60 W. Main Street**  
 Land Value: \$26,800  
 Imp. Value: \$127,000  
 Area: 0.07 acres



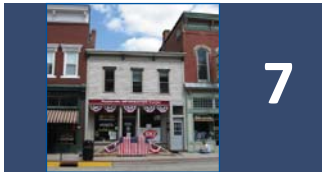
**50 W. Main Street**  
 Land Value: \$31,800  
 Imp. Value: \$181,400  
 Area: 0.08 acres



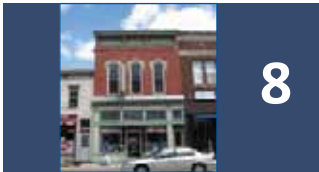
**40 W. Main Street**  
 Land Value: \$18,100  
 Imp. Value: \$115,900  
 Area: 0.04 acres



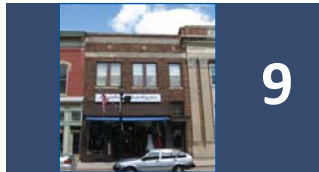
**10 W. Main Street**  
 Land Value: \$36,700  
 Imp. Value: \$223,600  
 Area: 0.11 acres



**20 E. Main Street**  
 Land Value: \$26,800  
 Imp. Value: \$70,400  
 Area: 0.07 acres



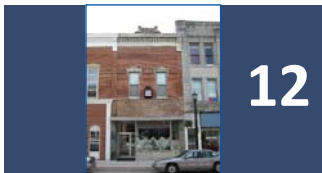
**30 E. Main Street**  
 Land Value: \$26,800  
 Imp. Value: \$197,000  
 Area: 0.07 acres



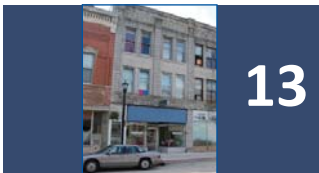
**40 E. Main Street**  
 Land Value: \$26,800  
 Imp. Value: \$91,800  
 Area: 0.07 acres



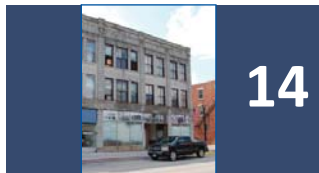
**44 E. Main Street**  
 Land Value: \$53,600  
 Imp. Value: \$243,300  
 Area: 0.14 acres



**35 E. Main Street**  
 Land Value: \$24,700  
 Imp. Value: \$92,700  
 Area: 0.06 acres



**25 E. Main Street**  
 Land Value: \$23,100  
 Imp. Value: \$134,100  
 Area: 0.06 acres



**15 E. Main Street**  
 Land Value: \$100,600  
 Imp. Value: \$620,200  
 Area: 0.26 acres



**15 W. Main Street**  
 Land Value: \$46,600  
 Imp. Value: \$181,000  
 Area: 0.11 acres



**65 W. Main Street**  
 Land Value: \$26,800  
 Imp. Value: \$150,500  
 Area: 0.07 acres



**75 W. Main Street**  
 Land Value: *n.a.*  
 Imp. Value: *n.a.*  
 Area: 0.06 acres



**85 W. Main Street**  
 Land Value: \$42,900  
 Imp. Value: \$198,600  
 Area: 0.11 acres



**95 W. Main Street**  
 Land Value: \$24,100  
 Imp. Value: \$150,800  
 Area: 0.06 acres



# East-Central Section



Image Source: 2008



13

#\_307000, #\_305000, &  
#\_304000  
Land Value: *n.a.*  
Imp. Value: *n.a.*  
Area: 0.32 acres



14

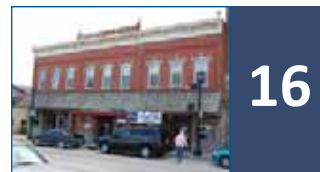
155 E. Main Street\*  
Land Value: *n.a.*  
Imp. Value: *n.a.*  
Area: 0.11 acres

\*includes 25 S. Oak Street



15

50 S. Oak Street  
Land Value: \$81,800  
Imp. Value: \$185,600  
Area: 0.17 acres



16

135 E. Main Street  
Land Value: \$51,500  
Imp. Value: \$205,800  
Area: 0.07 acres

Photos Taken: August 2009

Parcel Information: 2009 City Assessments



**1**

**45 N. Thrid Street**

Land Value: \$11,100  
 Imp. Value: \$53,600  
 Area: 0.04 acres



**2**

**60 E. Main Street**

Land Value: \$41,000  
 Imp. Value: \$245,000  
 Area: 0.11 acres



**3**

**76 E. Main Street**

Land Value: \$26,800  
 Imp. Value: \$218,700  
 Area: 0.06 acres



**4**

**80 E. Main Street**

Land Value: \$22,600  
 Imp. Value: \$130,200  
 Area: 0.08 acres



**5**

**96 E. Main Street**

Land Value: \$26,800  
 Imp. Value: \$259,100  
 Area: 0.07 acres



**6**

**100 E. Main Street**

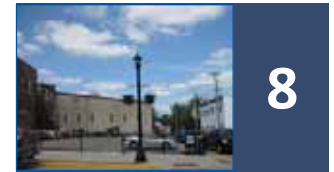
Land Value: \$21,500  
 Imp. Value: \$98,100  
 Area: 0.04 acres



**7**

**110-120 E. Main Street**

Land Value: \$18,600  
 Imp. Value: \$71,400  
 Area: 0.05 acres



**8**

**128-130 E. Main Street  
 (City Parking Lot)**

Land Value: *n.a.*  
 Imp. Value: *n.a.*



**9**

**150 E. Main Street**

Land Value: *n.a.*  
 Imp. Value: *n.a.*  
 Area: 0.17 acres



**10**

**180 E. Main Street**

Land Value: \$166,600  
 Imp. Value: \$282,100  
 Area: 0.82 acres



**11**

**195 E. Main Street**

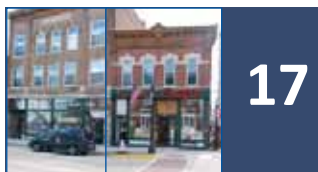
Land Value: \$66,300  
 Imp. Value: \$69,000  
 Area: 0.14 acres



**12**

**50 S. Water Street**

Land Value: \$23,400  
 Imp. Value: \$50,700  
 Area: 0.10 acres



**17**

**115 E. Main Street**

Land Value: \$87,600  
 Imp. Value: \$625,400  
 Area: 0.22 acres



**18**

**95 E. Main Street**

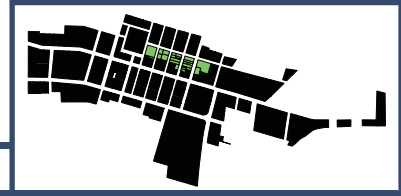
Land Value: \$66,300  
 Imp. Value: \$233,700  
 Area: 0.22 acres



**19**

**85 E. Main Street**

Land Value: \$91,900  
 Imp. Value: \$367,800  
 Area: 0.26 acres



# North-Central Section



Image Source: 2008



13

**55 N. Second Street**

Land Value: \$35,200  
 Imp. Value: \$510,700  
 Area: 0.15 acres



14

**65 N. Second**

Land Value: \$14,200  
 Imp. Value: \$83,900  
 Area: 0.04 acres



15

**75 N. Second Street**

Land Value: \$60,200  
 Imp. Value: \$376,000  
 Area: 0.20 acres



16

**70 N. Oak Street**

Land Value: \$10,400  
 Imp. Value: \$94,400  
 Area: 0.04 acres

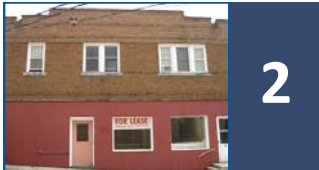
Photos Taken: August 2009

Parcel Information: 2009 City Assessments



1

**75 N. Bonson Street**  
**(City Hall Building)**  
 Land Value: *n.a.*  
 Imp. Value: *n.a.*  
 Area: 0.39 acres



2

**65 N. Fourth Street**  
 Land Value: \$19,200  
 Imp. Value: \$70,800  
 Area: 0.08 acres



3

**#\_060000, #\_061000, & #\_063000 (city parking)**  
 Land Value: *n.a.*  
 Imp. Value: *n.a.*  
 Area: 0.33 acres



4

**#\_045000 & #\_044000 (city parking lot)**  
 Land Value: *n.a.*  
 Imp. Value: *n.a.*  
 Area: 0.09 acres



5

**90 N. Second Street**  
 Land Value: \$18,200  
 Imp. Value: \$157,200  
 Area: 0.06 acres



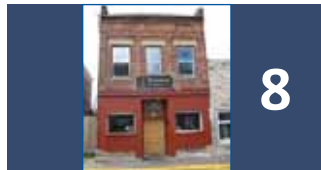
6

**80 N. Second Street**  
 Land Value: \$9,300  
 Imp. Value: \$38,100  
 Area: 0.03 acres



7

**74 N. Second Street**  
 Land Value: \$5,900  
 Imp. Value: \$82,900  
 Area: 0.02 acres



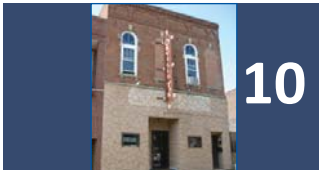
8

**70 N. Second Street**  
 Land Value: \$30,200  
 Imp. Value: \$91,100  
 Area: 0.10 acres



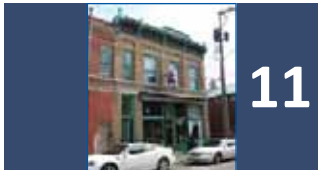
9

**60 N. Second Street**  
 Land Value: \$30,200  
 Imp. Value: \$91,700  
 Area: 0.10 acres



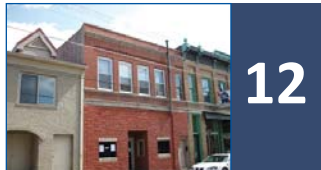
10

**30 N. Second Street**  
 Land Value: \$32,500  
 Imp. Value: \$190,400  
 Area: 0.07 acres



11

**35 N. Second Street**  
 Land Value: \$13,800  
 Imp. Value: \$80,100  
 Area: 0.05 acres



12

**45 N. Second Street**  
 Land Value: \$12,600  
 Imp. Value: \$133,700  
 Area: 0.04 acres



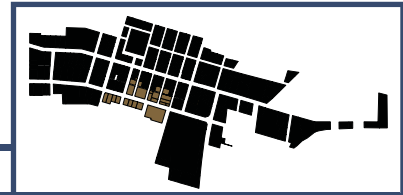
17

**75 N. Oak Street**  
 Land Value: *n.a.*  
 Imp. Value: *n.a.*  
 Area: 0.50 acres



18

**55 N. Oak Street**  
 Land Value: \$30,500  
 Imp. Value: \$271,500  
 Area: 0.16 acres



# South-Central Section



Image Source: 2008



9

**60 S. Third Street**  
 Land Value: \$50,800  
 Imp. Value: \$7,400  
 Area: 0.16 acres



10

**30 S. Third Street**  
 Land Value: \$31,100  
 Imp. Value: \$0  
 Area: 0.11 acres



11

**35 S. Third Street**  
 Land Value\*: see #7  
 Imp. Value\*: see #7  
 Area: 0.14 acres



12

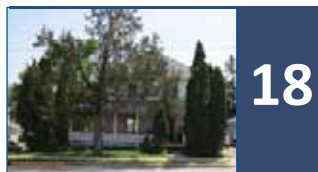
**65-95 S. Third Street**  
 (includes 90 S. Second St.)  
 Land Value\*: \$170,300  
 Imp. Value\*: \$608,900  
 Area: 0.41 acres

*\* assessed values for parcels #11 and #12 are combined, as they are owned by same business*



17

**95 W. Pine Street**  
 Land Value: \$8,100  
 Imp. Value: \$126,500  
 Area: 0.12 acres



18

**125 W. Pine Street**  
 Land Value: \$11,900  
 Imp. Value: \$75,300  
 Area: 0.12 acres



19

**135 W. Pine Street**  
 Land Value: \$9,600  
 Imp. Value: \$89,500  
 Area: 0.11 acres



20

**165 W. Pine Street**  
 Land Value: \$13,900  
 Imp. Value: \$119,700  
 Area: 0.17 acres



Photos Taken: August 2009

Parcel Information: 2009 City Assessments



**1**

**30-40 Bonson Street**  
 Land Value: \$6,200  
 Imp. Value: \$64,400  
 Area: 0.02 acres



**2**

**55 S. Court Street  
 (Platteville Senior Center)**  
 Land Value: n.a.  
 Imp. Value: n.a.



**3**

**85 S. Court Street  
 (Post office)**  
 Land Value: n.a.  
 Imp. Value: n.a.



**4**

**55 S. Bonson Street**  
 Land Value: \$20,100  
 Imp. Value: \$146,300  
 Area: 0.10 acres



**5**

**75 S. Bonson  
 (City Parking Lot)**  
 Land Value: n.a.  
 Imp. Value: n.a.  
 Area: 0.39 acres



**6**

**65 S. Fourth Street**  
 Land Value: \$10,200  
 Imp. Value: \$111,700  
 Area: 0.03 acres



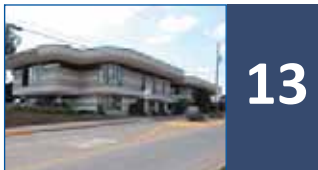
**7**

**10 E. Pine Street**  
 Land Value: \$31,800  
 Imp. Value: \$82,000  
 Area: 0.10 acres



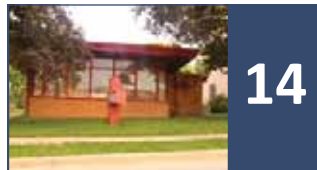
**8**

**90 S. Third Street**  
 Land Value: \$19,700  
 Imp. Value: \$3,400  
 Area: 0.09 acres



**13**

**25 E. Pine Street**  
 Land Value: \$210,600  
 Imp. Value: \$2,274,400  
 Area: 0.92 acres



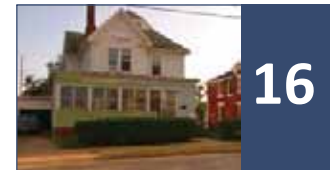
**14**

**15 W. Pine Street**  
 Land Value: \$36,300  
 Imp. Value: \$86,100  
 Area: 0.16 acres



**15**

**45 W. Pine Street**  
 Land Value: \$10,600  
 Imp. Value: \$119,500  
 Area: 0.12 acres



**16**

**75 W. Pine Street**  
 Land Value: \$8,100  
 Imp. Value: \$68,900  
 Area: 0.11 acres



**21**

**185 W. Pine Street**  
 Land Value: \$32,600  
 Imp. Value: \$109,800  
 Area: 0.13 acres

# East Section

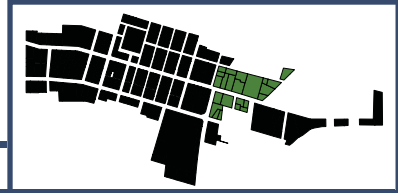


Image Source: 2008



**390 E. Main Street**  
 Land Value: \$15,000  
 Imp. Value: \$96,100  
 Area: 0.18 acres



**315 E. Mineral Street**  
 Land Value: \$15,300  
 Imp. Value: \$47,700  
 Area: 0.37 acres



**230 E. Main Street**  
 Land Value: \$20,100  
 Imp. Value: \$48,600  
 Area: 0.29 acres



**30 Virgin Street**  
 Land Value: \$9,400  
 Imp. Value: \$109,300  
 Area: 0.12 acres



**35 Ellen Street**  
 Land Value: \$9,400  
 Imp. Value: \$64,400  
 Area: 0.10 acres



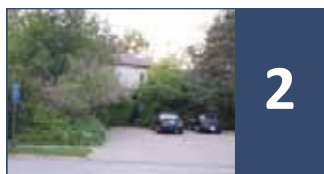
**315 E. Main Street**  
 Land Value: \$19,700  
 Imp. Value: \$78,500  
 Area: 0.20 acres



**275 E. Main Street  
 (Fire Station)**  
 Land Value: *n.a.*  
 Imp. Value: *n.a.*  
 Area: 0.51 acres

**Photos Taken: August 2009**

**Parcel Information: 2009 City Assessments**



**2**

**30 Broadway Street**

Land Value: \$25,000  
 Imp. Value: \$162,800  
 Area: 0.45 acres



**3**

**70 Broadway Street**

Land Value: \$15,800  
 Imp. Value: \$95,300  
 Area: 0.32 acres



**4**

**395 E. Mineral Street**

Land Value: \$9,400  
 Imp. Value: \$98,600  
 Area: 0.11 acres



**5**

**100 Broadway Street**

Land Value: \$24,700  
 Imp. Value: \$90,900  
 Area: 0.34 acres



**7**

**245 E. Mineral Street**

Land Value: \$22,100  
 Imp. Value: \$44,200  
 Area: 0.21 acres



**8**

**85 N. Water Street**

Land Value: \$12,800  
 Imp. Value: \$53,100  
 Area: 0.15 acres



**9**

**65 N. Water Street**

Land Value: \$18,100  
 Imp. Value: \$0  
 Area: 0.14 acres



**10**

**210 E. Main Street**

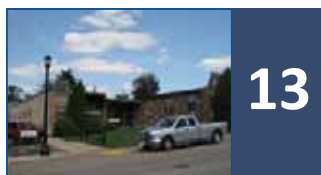
Land Value: \$36,600  
 Imp. Value: \$120,100  
 Area: 0.30 acres



**12**

**250 E. Main Street**

Land Value: \$26,200  
 Imp. Value: \$201,000  
 Area: 0.43 acres



**13**

**280-310 E. Main Street**

Land Value: \$89,400  
 Imp. Value: \$529,500  
 Area: 0.53 acres



**14**

**350 E. Main Street**

Land Value: \$108,600  
 Imp. Value: \$180,300  
 Area: 1.36 acres



**15**

**335 E. Main Street**

Land Value: \$12,700  
 Imp. Value: \$174,700  
 Area: 0.13 acres



**20**

**225 E. Main Street**

Land Value: \$30,500  
 Imp. Value: \$118,200  
 Area: 0.34 acres



**21**

**55 S. Water Street**

Land Value: \$81,000  
 Imp. Value: \$126,300  
 Area: 0.38 acres



**22**

**230 E. Pine Street**

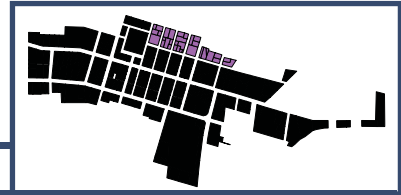
Land Value: \$8,900  
 Imp. Value: \$20,500  
 Area: 0.16 acres



**23**

**250 E. Pine Street**

Land Value: \$9,300  
 Imp. Value: \$33,200  
 Area: 0.12 acres



# North Section



Image Source: 2008



13

**110 E. Mineral Street**  
 Land Value: *n.a.*  
 Imp. Value: *n.a.*  
 Area: 0.37 acres



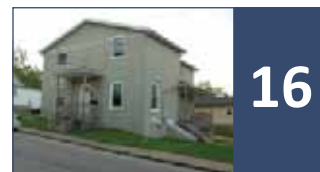
14

**130-140 E. Mineral St.**  
 (park space)  
 Land Value: *n.a.*  
 Imp. Value: *n.a.*  
 Area: 0.41 acres



15

**160 E. Mineral Street**  
 Land Value: \$18,400  
 Imp. Value: \$43,000  
 Area: 0.25 acres

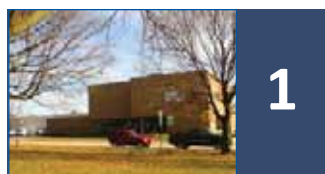


16

**180 E. Mineral Street**  
 Land Value: \$11,100  
 Imp. Value: \$101,500  
 Area: 0.13 acres

Photos Taken: August 2009

Parcel Information: 2009 City Assessments



**1**

**135-195 Bonson St.**  
 (Platteville Telephone Co.)  
 Land Value: *n.a.*  
 Imp. Value: *n.a.*  
 Area: 0.75 acres



**2**

**165 N. Fourth Street**  
 (City parking lot)  
 Land Value: *n.a.*  
 Imp. Value: *n.a.*  
 Area: 0.42 acres



**3**

**10-40 E. Mineral Street**  
 (City parking lot)  
 Land Value: *n.a.*  
 Imp. Value: *n.a.*  
 Area: 0.31 acres



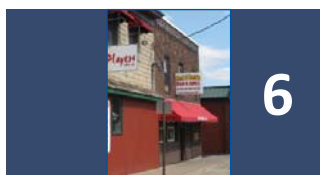
**4**

**50 E. Mineral Street**  
 Land Value: \$17,900  
 Imp. Value: \$204,400  
 Area: 0.07 acres



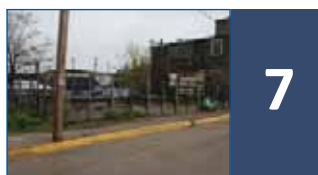
**5**

**90 E. Mineral Street**  
 Land Value: \$3,400  
 Imp. Value: \$107,200  
 Area: 0.02 acres



**6**

**60-80 E. Mineral Street**  
 Land Value: \$23,400  
 Imp. Value: \$120,500  
 Area: 0.26 acres



**7**

**155 N. Third Street**  
 Land Value: \$12,100  
 Imp. Value: \$0  
 Area: 0.05 acres



**8**

**150 N. Second Street**  
 Land Value: \$31,700  
 Imp. Value: \$37,400  
 Area: 0.20 acres



**9**

**190 N. Second Street**  
 Land Value: \$29,000  
 Imp. Value: \$136,900  
 Area: 0.20 acres



**10**

**165 N. Second Street**  
 Land Value: \$34,600  
 Imp. Value: \$153,200  
 Area: 0.12 acres



**11**

**115-125 E. Furnace St.**  
 Land Value: \$22,900  
 Imp. Value: \$47,700  
 Area: 0.13 acres



**12**

**140 N. Oak Street**  
 Land Value: \$32,400  
 Imp. Value: \$68,500  
 Area: 0.13 acres



**17**

**130 N. Water Street**  
 Land Value: \$10,000  
 Imp. Value: \$75,700  
 Area: 0.13 acres



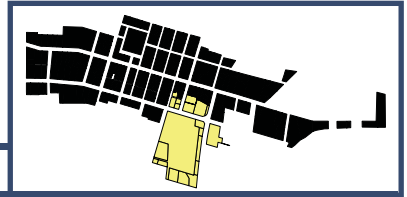
**18**

**135 N. Water Street**  
 Land Value: \$8,500  
 Imp. Value: 52,200  
 Area: 0.10 acres



**19**

**200 E. Mineral Street**  
 Land Value: \$36,300  
 Imp. Value: \$104,700  
 Area: 0.22 acres



# South Section



Photos Taken: August 2009

Parcel Information: 2009 City Assessments



**85 S. Second Street**  
 Land Value: \$17,000  
 Imp. Value: \$3,600  
 Area: 0.10 acres



**85 S. Second Street**  
 Land Value: \$27,500  
 Imp. Value: \$5,200  
 Area: 0.20 acres



**70 S. Oak Street**  
 (includes 120 E. Pine St.)  
 Land Value: \$38,300  
 Imp. Value: \$9,000  
 Area: 0.20 acres



**45 S. Oak Street**  
 Land Value: \$24,100  
 Imp. Value: \$110,500  
 Area: 0.32 acres



**75 S. Oak Street**  
 Land Value: \$81,800  
 Imp. Value: \$185,600  
 Area: 0.38 acres



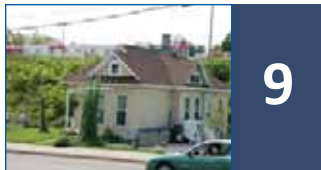
**70 S. Water Street**  
 Land Value: \$119,300  
 Imp. Value: \$255,200  
 Area: 0.70 acres



**125 S. Water Street**  
 Land Value: \$100,500  
 Imp. Value: \$866,500  
 Area: 0.98 acres



**185 E. Pine Street**  
 Land Value: \$71,800  
 Imp. Value: \$208,500  
 Area: 0.24 acres



**140 S. Water Street**  
 Land Value: \$8,900  
 Imp. Value: \$116,000  
 Area: 0.13 acres



**210 S. Water Street**  
 Land Value: \$56,100  
 Imp. Value: \$216,000  
 Area: 0.37 acres



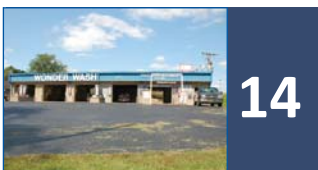
**250 S. Water Street**  
 Land Value: \$106,900  
 Imp. Value: \$184,000  
 Area: 0.20 acres



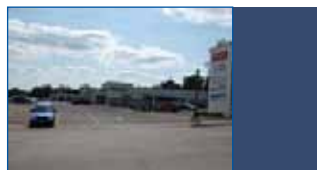
**300 S. Water Street**  
 Land Value: \$84,400  
 Imp. Value: \$221,100  
 Area: 0.41 acres



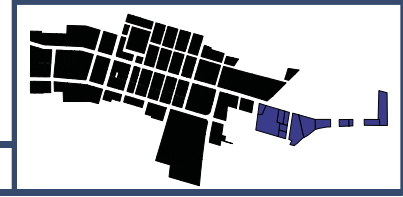
**140 Alden Avenue**  
 Land Value: \$92,800  
 Imp. Value: \$157,500  
 Area: 0.48 acres



**#\_615000**  
 Land Value: see #9  
 Imp. Value: see #9  
 Area: 0.44 acres



**125 E. Pine Street**  
 Land Value: \$850,400  
 Imp. Value: \$3,011,700  
 Area: 7.90 acres



# Far East Section



1



2

**385-405 E. Main Street  
(Mining Museum)**

Land Value: *n.a.*  
Imp. Value: *n.a.*  
Area: 2.23 acres

**445 E. Main Street**

Land Value: \$16,600  
Imp. Value: \$112,600  
Area: 0.31 acres



Image Source: 2008



6

(*part of #8*)



7

(*part of #8*)



8

**#271102610000 &  
#271102600000**

Land Value *n.a.*  
Imp. Value: *n.a.*  
Area: 2.11 acres



9

**575 E. Main Street**

Land Value: \$143,800  
Imp. Value: \$211,200  
Area: 0.50 acres



Photos Taken: August 2009

Parcel Information: 2009 City Assessments



3

**455 E. Main Street**  
 Land Value: \$14,800  
 Imp. Value: \$96,000  
 Area: 0.24 acres



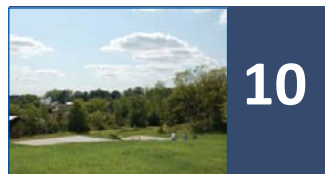
4

**50 Cora Street**  
 Land Value: *n.a.*  
 Imp. Value: *n.a.*  
 Area: 0.20 acres



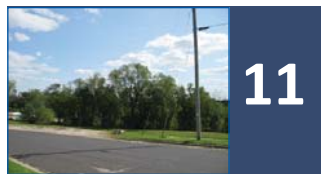
5

**70 Cora Street**  
 Land Value: \$11,800  
 Imp. Value: \$35,100  
 Area: 0.20 acres



10

**605 E. Main Street  
 (Skatepark)**  
 Land Value: *n.a.*  
 Imp. Value: *n.a.*  
 Area: 0.25 acres



11

**645 E. Main Street**  
 Land Value: \$5,500  
 Imp. Value: \$1,000  
 Area: 0.10 acres



12

**#271026030000**  
 Land Value: \$9,800  
 Imp. Value: \$0  
 Area: 0.36 acres



13

**745 E. Mineral Street**  
 Land Value: *n.a.*  
 Imp. Value: *n.a.*  
 Area: 1.22 acres