

## COMMUNITY SAFE ROUTES COMMITTEE

Monday, February 15, 2021 6:00 PM

MEETING Was HELD VIA ZOOM

<https://us02web.zoom.us/j/84091353730?pwd=M3ZPUmRvREJaNkNGcnU3S0lZamlrUT09>

Meeting ID: 840 9135 3730

Passcode: 896106

### Minutes (by Kristina Fields)

Attendees: Kristina Fields, Cindy Tang, Maureen Vorwald, Robin Fatzinger, Danica Larson, David Ralph, Jason Artz

Staff Attendees: Howard Crofoot, Luke Peters, Lauree Aulik

1. Call to order at 6:02 pm
2. Approval of Minutes: September 21, January 18, and January 25 meeting
  - a. Motion to approve as written: Dave, second by Robin, passed unanimously.
3. Citizen Comments, Observations, & Petitions
  - a. Robin – just returned from a PCA meeting. There is discussion with Human Powered Trails about possibly doing a trial run of winter grooming of three different trails: fat bikes, x country, and walking on the PCA trail from J & N Stone to Menards for remainder of season and possibly then signage. Trial run this year and then possibly do longer section next winter.
  - b. Danica – currently the Human Powered Trails is doing a ‘go fund me’ to fund the grooming
  - c. Kristina is frustrated with some of Council member’s liking of the SW Policy Option 2 revised. Danica also commented on the little discussion on the Option 3. The CSRC Option 3 was requested by them and was asked to be flexible. CSRC did that and the council members who like Option 2 revised better did not give any reasons for not liking Option 3. Council asked CSRC and Planning Commission to work together to draft a policy. We spent several hours on it and Council seems to want to move forward with their own policy anyways without saying what they don’t like about Option 3. Why wouldn’t the CSRC and Planning Commission volunteers be frustrated with this process? The City asks for volunteers to be part of committees and provide input and for feedback to be ignored is honestly a very frustrating process to be part of. CSRC and Planning Commission have worked to try to create a policy that would be easy for City Staff to follow so that it would be the same for all development. Cindy commented that we have made tremendous progress with bike/ped in P’ville over the years. We agreed that the progress has been good, but the process is less defined and could certainly be improved upon.
  - d. Please update link to P’ville Safe Routes to School Plan
    - i. Not working link on this site <https://www.platteville.org/bc-csrc#:~:text=%E2%80%9CThe%20mission%2Fpurpose%20of%20the,areas%2C%20and%20retail%20shopping%20areas.>
    - ii. Correct link to SWWRPC P’ville SRTS Plan <https://www.swwrpc.org/services/transportation-planning/safe-routes-to-school>

#### 4. New Business

- a. Sidewalk Plan Kristina – Feb 23 Council meetings, action item for which policy. Council’s intent is they wanted the clean version of option 2 and 3 and open it up for motion and second for one or the other and have discussion and vote. There were 2-3 supporters of each options. Howard does not believe they will be changing language in options. Citizens should have a chance to bring comments forward before that decision. Danica wanted to speak at the last meeting, but it was not asked. It is recommended that citizens send a chat message to request to speak.
- b. Howard said that the City will provide a clean version of CSRC Option 3. They will take out comments/strike throughs and take out the figures for the reduced street width.
- c. Sidewalk plan and policy
  - i. When we have the new GIS map from Laurie (See Figure 1 below), what criteria do we want to use to determine the priorities? Ideas could include:
    1. Proximity (distance) to schools, parks, jobs, shopping, church
    2. Equity – near apts and low income, senior living – those with reduced car use, bus routes
    3. Traffic volumes on roadways
    4. High and low priorities
      - a. Short cul-de sacs?
      - b. No current connections to existing s/w?
    5. Lean towards sidewalk or ped/bike trails and some considerations for doing that
      - a. ROW widths
      - b. Other connections to trails
    6. One side s/w versus 2 sides – if it already has 2 sides?
  - ii. Map is GIS which allows for geospatial info:
    1. Lengths are available – could use for cost estimating
    2. Slope of roadway
    3. Parks and school locations – and distance to it
    4. Laurie could send us link for viewing map
    5. Danica – is pedestrian data available? Hickory is used a lot (students going to/from university). Howard does not know of a way to collect the data unless we had student groups/volunteers collecting
  - iii. Howard– there was an Autocad version of a s/w map that showed existing sidewalks and now it is on GIS. The 2009 SRTS map had a tier map. Cindy suggests that we go back and look back at the SRTS map and id if they are still priorities and if they are, start with those. Identify what we think is important and focus on those areas to start.
    1. Reflect on past discussions - why didn’t we install s/w in particular areas? Was it due to money or politics/both?
  - iv. Future meeting goals:
    1. put together a list of things we think are important and prioritize
    2. Lack of money – identify specific \$cost/year and then identify which sidewalks we would like to complete during that year

3. Grant money goes to communities that have strong s/w ordinances
- v. Next meeting's agenda include
  1. map from SRTS 2009 plan (pdf page 31)
    - a. [https://images.modular.dev/f54d730f-a62a-436d-b5be-560d4aafedb7/8483a705-1f12-4599-bb9a-9e1eea899896/Platteville\\_SRTS\\_Plan.pdf](https://images.modular.dev/f54d730f-a62a-436d-b5be-560d4aafedb7/8483a705-1f12-4599-bb9a-9e1eea899896/Platteville_SRTS_Plan.pdf)
  2. Laurie's link for GIS map
  3. CSRC project list/spreadsheet
  4. Ideas for missing s/w locations that we are familiar with
    - a. North Court St – Jewett to Camp and crossing to Smith Park -  
\*developmentally disabled person on Court Street
      - i. Versus the one sided sidewalk on Henry
    - b. S Chestnut – existing end of s/w by Harrison Ave to Rountree Commons
    - c. East Mineral crossing, just east of Oak
    - d. Hickory Street – Camp to Cedar Street
    - e. Washington St – north of Camp
  - 5.
5. Old Business
  - a. Sidewalk Policy Howard – see discussion above
6. Adjourn
  - a. Motion by Dave, second by Jason – approved unanimously. Adjourned at 6:55 pm.
  - b.

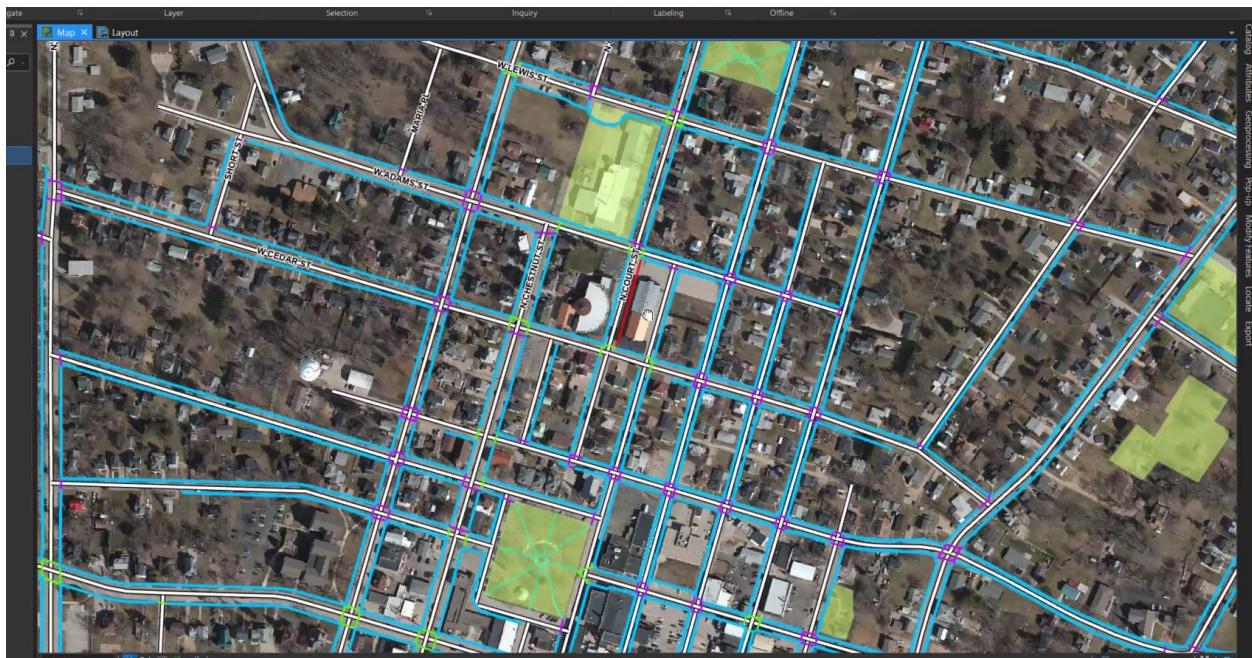


Figure 1 Screen capture of new GIS sidewalk map