



PLATTEVILLE
FIRE DEPARTMENT



WE'RE BUILDING
A NEW FIRE FACILITY
TO SERVE
THE PLATTEVILLE FIRE DISTRICT



WHY A NEW FIRE FACILITY?

The current 1964 infrastructure no longer meets the needs of today's fire service.

- Insufficient space, inside and outside
- **Lack of adequate turnout space and absence of decontamination space & facilities**
- Lack of capacity to expand for future needs

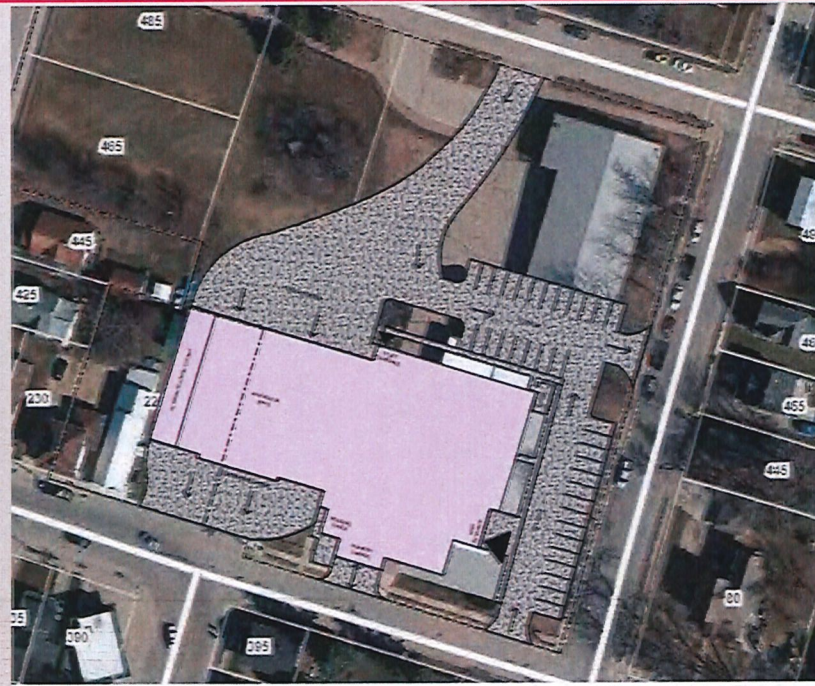


PLATTEVILLE
FIRE DEPARTMENT



THE VISION

**ADDITIONAL SPACE & SIGNIFICANT IMPROVEMENTS IN
SAFETY FOR OUR FIREFIGHTERS**



FAVORED OPTION OF PARTNERS & FIRE FIGHTERS
ADOPTED BY THE COUNCIL
**SINGLE-STORY FACILITY WITH 7TH BAY
ON EXPANDED O.E. GRAY SITE**

Relevant Considerations

- **Egress onto HWY 81 (safety and response improvement)**
- **Decontamination facilities – engine exhaust removal & uniform/person cleaning equipment**
- **Allows for future full-time firefighter occupancy**
- **Single story = no elevator costs**
- **Allows for off-street public parking**
- **Additional responder off-street parking**
- **NOTE: Requires purchase of adjacent land (2 lots)**



PLATTEVILLE
FIRE DEPARTMENT



THE WHY OF THE DECISION

Size of Facility (Base Bid)	28,881 sq ft (90.5% of assessed need of 31,900 sq ft.)
Response	Facility is in optimal location for volunteer response in the center of fire district. Optimal egress onto HWY 81.
Growth Opportunity	Growth may likely be an outbuilding or modification to responder parking, with consideration for slopes.
Pros	Safer egress visibility onto HWY81, anticipated space for 7th bay (pending land acquisition), room for off-street parking, administration connected to watch and support garage, additional storage space, living quarters built out, best operational flow
Cons	Requires property acquisition, limited future growth with consideration of slopes
Cost (Base Bid)	\$13,265,980 (based on square footage assessments from early 2023), and does not include land acquisition & associated costs
Cost with added Bay (sq')	(+) \$398,560 (adds additional 1,775 sq ft)

FUNDING THE FIRE FACILITY

estimated cost: \$14.5Million

Estimated Cost of Project									\$14,500,000.00
Federal Appropriation									\$7,000,000.00
Gifts, Donations, Grants									\$1,500,000.00
Amount to be funded by Municipalities									\$6,000,000.00
Municipality	WI DOA 2021 Population Estimates	Sections Covered	Total Sections	Percentage Coverage	Calculated Population Covered by District	Percentage Township would pay	2020 WI DOA Assessed Value	Percentage of Assessed	Proposed Budget Cost Breakdown
Belmont	801	10	42	24%	193.01	1.33%	\$55,901,200.00	5.06%	\$79,800.00
Elk Grove	567	8	36	22%	126	0.87%	\$39,159,400.00	3.55%	\$52,200.00
Ellenboro	546	13	36	36%	197.17	1.36%	\$45,500,600.00	4.12%	\$81,600.00
Harrison	528	22	36	61%	322.67	2.22%	\$47,157,700.00	4.27%	\$133,200.00
Lima	771	36	36	100%	771	5.30%	\$47,830,200.00	4.33%	\$318,000.00
Platteville	1,518	29	29	100%	1518	10.44%	\$142,704,400.00	12.92%	\$626,400.00
Smelser	789	12	36	33%	263	1.81%	\$64,400,900.00	5.83%	\$108,600.00
C. Platteville	11,154	7	7	100%	11154	76.69%	\$661,974,837.00	59.93%	\$4,601,400.00
TOTALS	16,674	137	258	53%	14,545	100%	\$1,104,629,237.00	100%	\$6,001,200.00

GETTING TO \$1.5M IN GIFT, GRANT INVESTMENT

\$1,500,000.00

	# of gifts		# of prospects
\$300,000	1	\$300,000	5
\$225,000	1	\$225,000	5
\$150,000	1	\$150,000	5
\$100,000	2	\$200,000	10
\$75,000	2	\$150,000	10
\$50,000	4	\$200,000	20
\$25,000	8	\$200,000	40
\$10,000	8	\$80,000	40
\$5,000	10	\$50,000	50
\$1,000	12	\$12,000	60
	49	\$1,567,000.00	245

NOTES:

Lead donor gift should be at least 15% of the goal. Ideal is lead gift of 25%. (Chart based on a 20% lead gift).

Plan for 5 calls/donor to receive 1 gift (so # of prospects are 5 times the number of gifts).

80% of goal is generally attributable to 20% of donors.

In 2017, the largest source of charitable giving came from individuals (72% of total giving); followed by foundations (15%), bequests (8%), and businesses/corporations (5%).



PLATTEVILLE
FIRE DEPARTMENT



DONATION INFORMATION

Make checks payable to Inspiring Community, noting Fire Station in the memo line. Inspiring Community, Inc. is a 501(c)(3) non-profit (ID: 82-2002935).

Please send donation form to:

**Inspiring Community, Inc. 190 Market St., PO Box 503,
Platteville, WI 53818**



**PLATTEVILLE
FIRE DEPARTMENT**



**THANK YOU!
TOGETHER WE CAN MAKE THIS HAPPEN!**

