

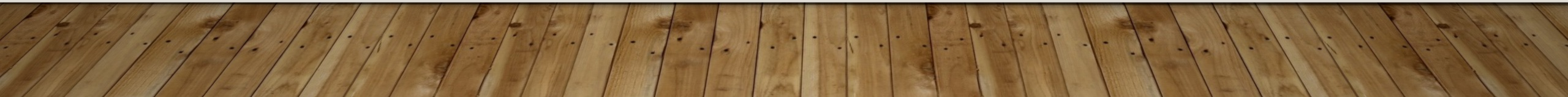


PLATTEVILLE  
FIRE DEPARTMENT



**WE'RE BUILDING  
A *NEW* FIRE FACILITY  
TO SERVE  
THE PLATTEVILLE FIRE DISTRICT**

---



# PRESENTATION CONTENT:

- 
- WHY DO WE NEED A NEW FACILITY
  - THE VISION
  - FUNDING
  - FUND RAISING COMMITTEE INTRODUCTIONS
  - DONATIONS
  - NEXT STEPS

## WHY A NEW FIRE FACILITY?

The current 1964 infrastructure no longer meets the needs of today's fire service.

- Insufficient space, inside and outside
- Lack of adequate turnout space and absence of decontamination space
- Lack of capacity to expand for future needs.

## WHY A NEW FIRE FACILITY?

The current 1964 infrastructure no longer meets the needs of today's fire service.

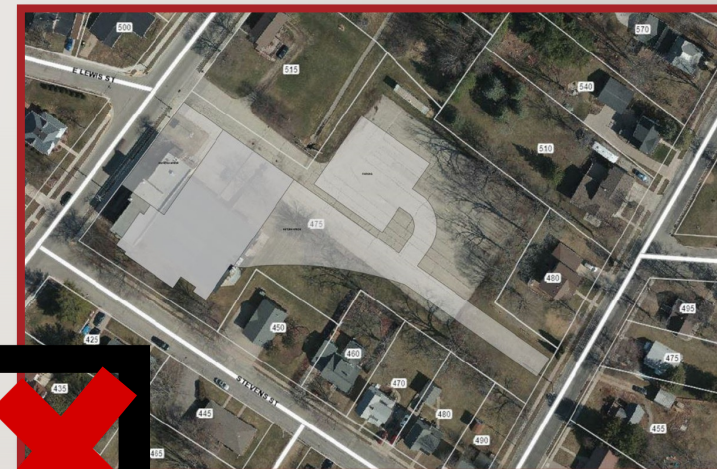
- Insufficient space, inside and outside
- Lack of adequate turnout space and absence of decontamination space
- Lack of capacity to expand for future needs.



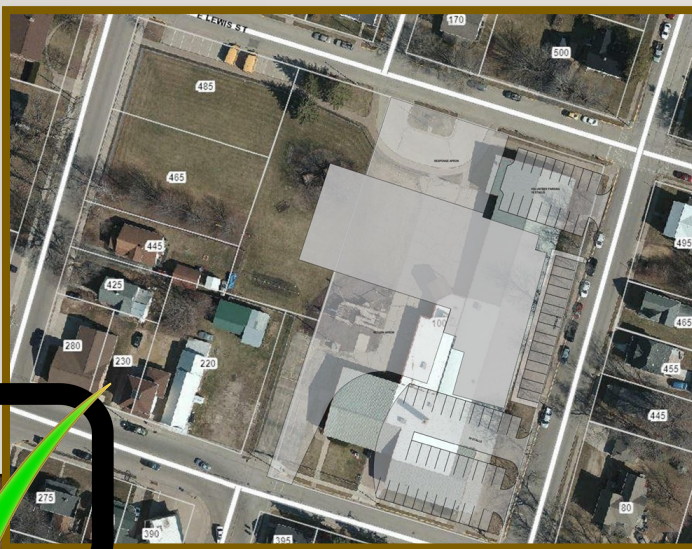
East Main: Too small.  
Six bays needed for current apparatus  
doesn't fit.

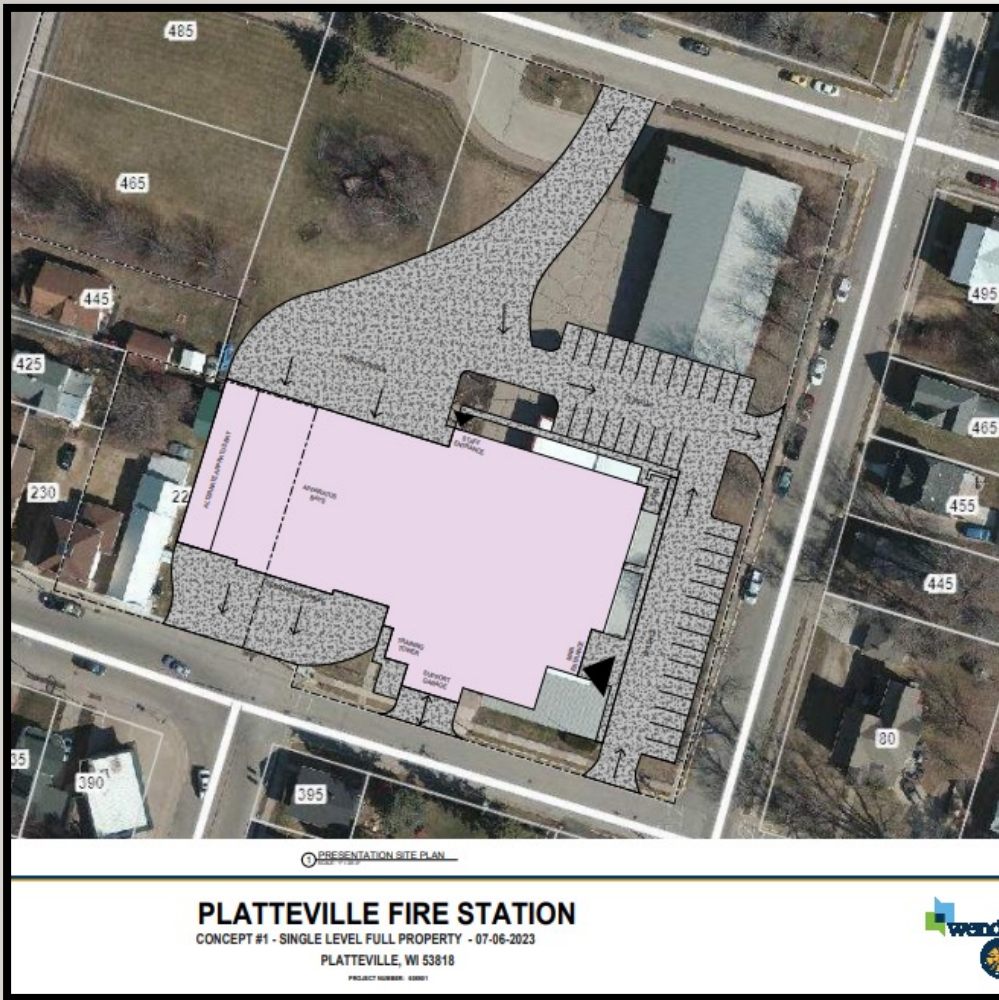


Water St: Small.  
Need three stories and challenges  
with parking, storm water, site  
safety, etc.



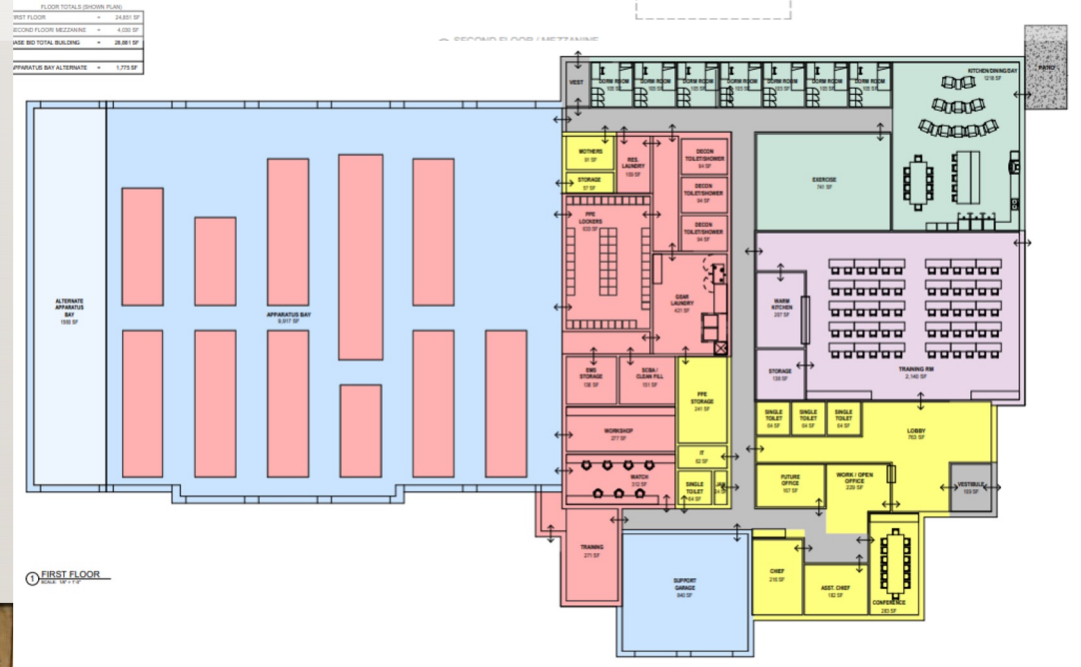
Adams/Lewis: Most opportunity.  
Has room for growth but has slope to account for.





## Features

- Requires adjacent land
- Egress onto HWY 81 (safety and response improvement)
- Allows for future FT occupancy
- Single story = no elevator costs
- Allows for off-street public parking
- Additional responder off-street parking

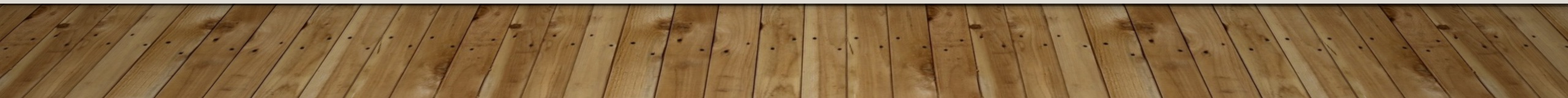


**FAVORED OPTION OF PARTNERS:  
SINGLE-STORY ON  
EXPANDED O.E GRAY WITH  
7TH BAY**



# THE WHY OF THE DECISION

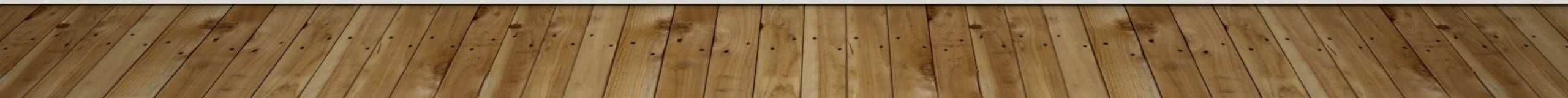
Size of Facility (Base Bid)	28,881 sq ft (90.5% of assessed need of 31,900 sq ft.)
Response	Facility is in optimal location for volunteer response in the center of fire district. Optimal egress onto HWY 81.
Growth Opportunity	Limited - growth may likely be an outbuilding or modification to responder parking, with consideration for slopes.
Pros	Safer egress visibility onto HWY81, anticipated space for 7th bay (pending land acquisition), room for off-street parking, administration connected to watch and support garage, additional storage space, living quarters built out, best operational flow
Cons	Requires property acquisition, limited future growth with consideration of slopes
Cost (Base Bid)	\$13,265,980 (based on square footage assessments from early 2023), and does not include land acquisition & associated costs
Cost with added Bay (sq')	(+) \$398,560 (adds additional 1,775 sq ft)



# FUNDING THE FIRE FACILITY

## estimated cost: \$14.5Million

Estimated Cost of Project									\$14,500,000.00
Federal Appropriation									\$7,000,000.00
<b>Gifts, Donations, Grants</b>									<b>\$1,500,000.00</b>
Amount to be funded by Municipalities									\$6,000,000.00
Municipality	WI DOA 2021 Population Estimates	Sections Covered	Total Sections	Percentage Coverage	Calculated Population Covered by District	Percentage Township would pay	2020 WI DOA Assessed Value	Percentage of Assessed	Proposed Budget Cost Breakdown
Belmont	801	10	42	24%	193.01	1.33%	\$55,901,200.00	5.06%	\$79,800.00
Elk Grove	567	8	36	22%	126	0.87%	\$39,159,400.00	3.55%	\$52,200.00
Ellenboro	546	13	36	36%	197.17	1.36%	\$45,500,600.00	4.12%	\$81,600.00
Harrison	528	22	36	61%	322.67	2.22%	\$47,157,700.00	4.27%	\$133,200.00
Lima	771	36	36	100%	771	5.30%	\$47,830,200.00	4.33%	\$318,000.00
Platteville	1,518	29	29	100%	1518	10.44%	\$142,704,400.00	12.92%	\$626,400.00
Smelser	789	12	36	33%	263	1.81%	\$64,400,900.00	5.83%	\$108,600.00
C. Platteville	11,154	7	7	100%	11154	76.69%	\$661,974,837.00	59.93%	\$4,601,400.00
<b>TOTALS</b>	<b>16,674</b>	<b>137</b>	<b>258</b>	<b>53%</b>	<b>14,545</b>	<b>100%</b>	<b>\$1,104,629,237.00</b>	<b>100%</b>	<b>\$6,001,200.00</b>





# FIRE FACILITY STEERING COMMITTEE

---

- Tammy Black
- Lynette Bloom
- Ron Boldt
- \*Paul Budden
- Linda Fansler
- \*John Fick
- Vicki Hirsch
- Bob Hundhausen
- Bill Kloster

- Melissa Lovell
- Jannan Roesch
- \*Joie Schoonover
- Nicole Tyc

\* co-leaders

From ICI:

- Sheri Engelke
- Cindy Tang
- Gene Weber

From the City:

- Ryan Simmons
- Clinton Langreck

# GETTING TO \$1.5M IN GIFT, GRANT INVESTMENT

\$1,500,000.00

	# of gifts		# of prospects
\$300,000	1	\$300,000	5
\$225,000	1	\$225,000	5
\$150,000	1	\$150,000	5
\$100,000	2	\$200,000	10
\$75,000	2	\$150,000	10
\$50,000	4	\$200,000	20
\$25,000	8	\$200,000	40
\$10,000	8	\$80,000	40
\$5,000	10	\$50,000	50
\$1,000	12	\$12,000	60
	49	\$1,567,000.00	245

## NOTES:

Lead donor gift should be at least 15% of the goal. Ideal is lead gift of 25%. (Chart based on a 20% lead gift).

Plan for 5 calls/donors to receive 1 gift (so # of prospects are 5 times the number of gifts).

80% of goal is generally attributable to 20% of donors.

In 2017, the largest source of charitable giving came from individuals (72% of total giving); followed by foundations (15%), bequests (8%), and businesses/corporations (5%).

# PROPOSED LEVELS OF GIVING FOR RECOGNITION

---

- \$5,000-\$7,500
- \$7,501-\$10,000
- \$10,001-\$12,500
- \$12,501-\$15,000
- \$15,001-\$25,000
- \$25,001-\$50,000
- \$50,001-\$75,000
- \$75,001-\$100,000
- \$100,001-\$250,000
- \$250,001 and above



# DONATION INFORMATION

---

Make checks payable to Inspiring Community, noting Fire Station in the memo line. Inspiring Community, Inc. is a 501(c)(3) non-profit (ID: 82-2002935).

Please send donation form to:

**Inspiring Community, Inc. 190 Market St., PO Box 503,  
Platteville, WI 53818**

**THANK YOU!**  
**TOGETHER WE CAN MAKE THIS HAPPEN!**

---

