

Miners Development, LLC

Platteville Public Library - Furnishings

W Main St & N Chestnut St
Platteville, WI 53818



PLUNKETT RAYSICH
ARCHITECTS, LLP

209 south water street milwaukee, wisconsin 53204 414 359 3060
2310 crossroads drive suite 2000 madison, wisconsin 53718 608 240 9900
1613 fruitville road suite 3 sarasota, florida 34236 941 348 3618

intelligent designs. inspired results. | www.prarch.com

Sheet Index

Architectural

| | |
|------|-------------------------------|
| ---- | FURNITURE TITLE SHEET |
| A001 | FURNITURE PLANS - LIBRARY |
| A011 | SHELVING PLANS - LIBRARY |
| A021 | FURNITURE SCHEDULES - LIBRARY |
| A031 | FURNITURE SCHEDULES - LIBRARY |
| A032 | FURNITURE SCHEDULES - LIBRARY |
| A041 | FURNITURE DETAILS |
| A042 | FURNITURE DETAILS |
| A051 | SIGNAGE PLANS - LIBRARY |

Project Information

Project Date: 27 Jun 16
PRA Project Number: 130328-03

Bid Package Number: 1-11

Bid Set
Construction Documents
Furniture Package

Project Location



Project Team

Construction Manager
National Construction, Inc. Tel (608) 257-0500

Civil
Pinnacle Engineering Group, LLC (Under Separate Contract)
Tel (262) 754-8888

Structural
RA Smith National, Inc. Tel (262) 781-1000

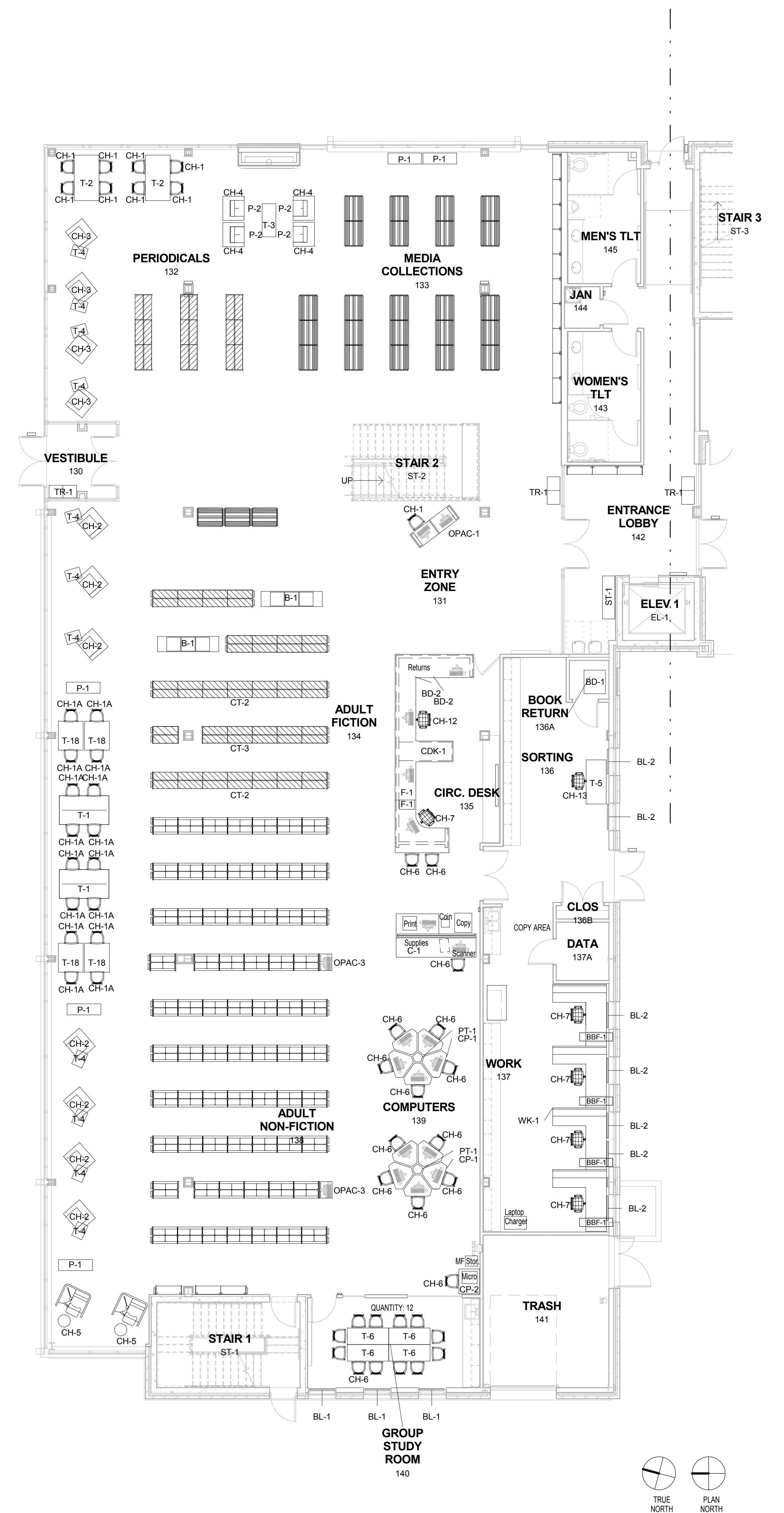
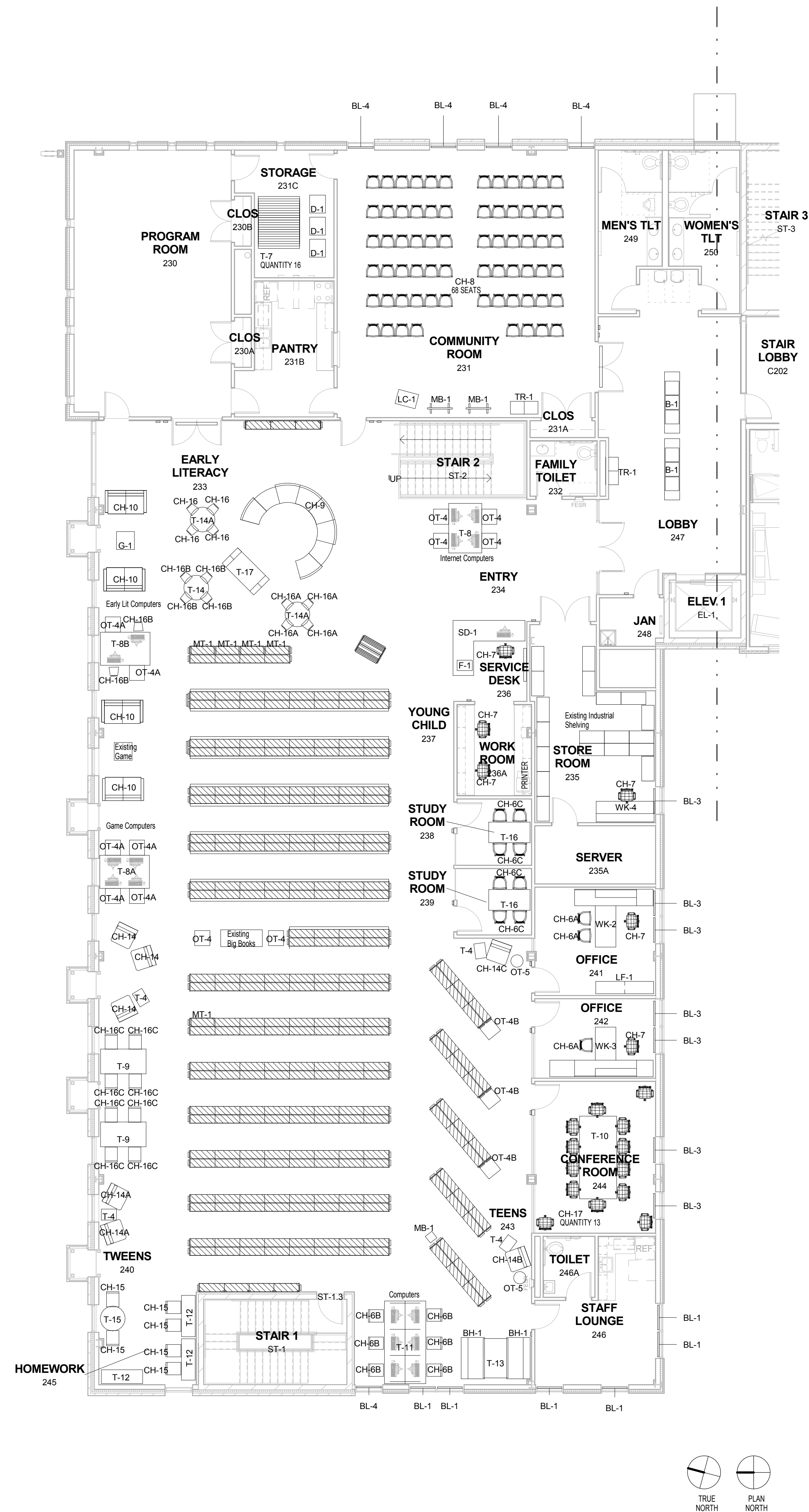
Fire Protection
Dave Jones, Inc. Design / Build
(Under Separate Contract)
Tel (608) 222-8490

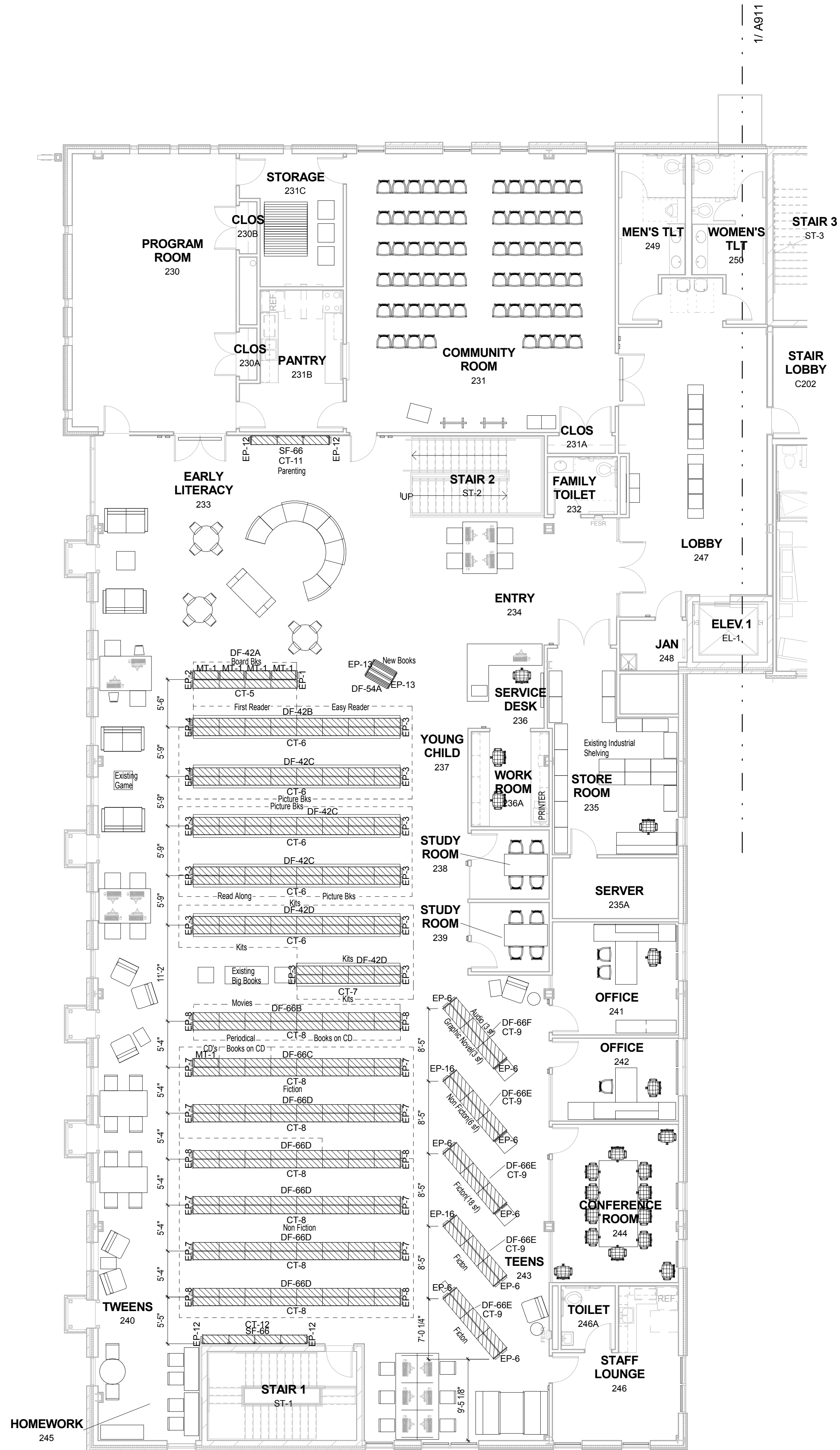
Plumbing
Dave Jones, Inc. Design / Build
(Under Separate Contract)
Tel (608) 222-8490

Mechanical
Dave Jones, Inc. Design / Build
(Under Separate Contract)
Tel (608) 222-8490

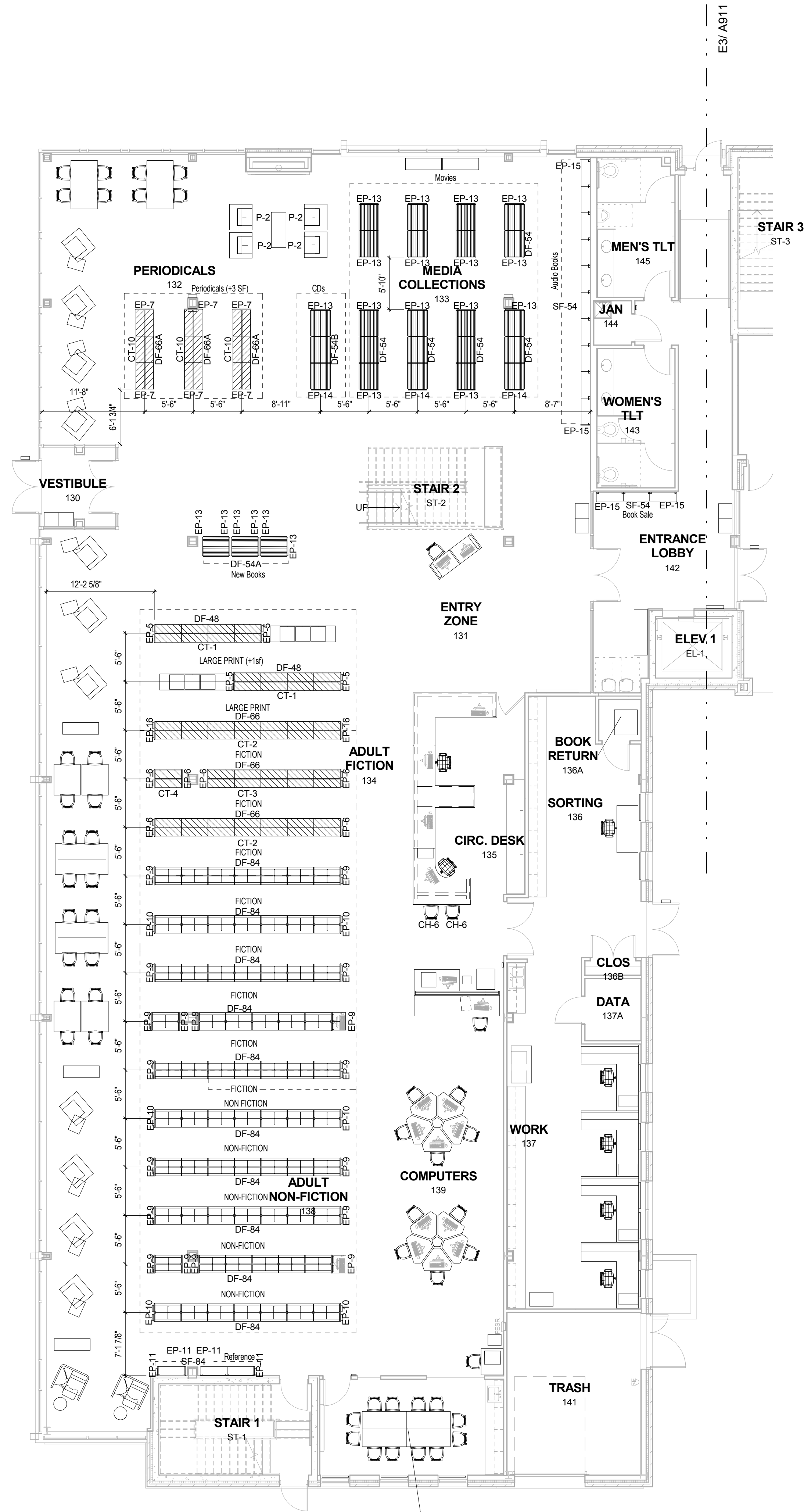
Electrical
Walser Electric, Inc. Design / Build
(Under Separate Contract)
Tel (608) 831-3706

Pool
Neuman Pools Inc. Design / Build
(Under Separate Contract)
Tel (920) 885-3366





2 SECOND FLOOR SHELVING PLAN
1/8" = 1'-0"



1 FIRST FLOOR SHELVING PLAN
1/8" = 1'-0"

C:\PRA\BAC\Local Project Files\130328-02-Hotel-Central_Indiana.rvt

6/22/2016 6:18:00 AM

| Furniture by Type | | | | |
|--------------------------------------|--|-----------------|---|-------|
| SYMBOL | Type | Manufacturer | DESCRIPTION | COUNT |
| Bid Package 1: Library Furnishings | | | | |
| B-1 | Bench | Arcadia | Radiant Bench, 7103, Three-Seat Bench, W: 89" x D: 22" x H: 17.5", COM 1.5 yards, Fabric: Momentum, Cover Cloth, Sorrel, Frame Finish: 90 Metallic Silver, Wood Species/Finish: #11 Natural Beech on Maple | 4 |
| CH-1 | Adult Study Chair | Allimur | Zenith, ZE3, Wood back & upholstered seat, No arms, Beech Back with Clear Finish, Frame: Silver Metallic 04, Standard Plastic Glides, COM 1.75 yards, Fabric: ArcCom, Isabella AC-60858 Lime #9. Upholster with pattern running front to back on seat. | 9 |
| CH-1A | Adult Study Chair | Allimur | Zenith, ZE3, Wood back & upholstered seat, No arms, Beech Back with Clear Finish, Frame: Silver Metallic 04, Stnadard Plastic Glides, COM 1.75 yards, Fabric: ArcCom, Isabella AC-60857 Lemon #8. Upholster with pattern running front to back on seat. | 16 |
| CH-2 | Lounge Chair | Cabot Wrenn | Scheme Chair, Tight Seat, CW6139-1, 32.25"H x 29.5"W x 32.5"D x 25.25" AH x 18.5"SH, COM 7 yards, Fabric: Architex, Highland Park, Summit - add moisture barrier. Maple leg finish: Honey Maple | 7 |
| CH-3 | Lounge Chair | David Edward | Aspen Low back with wood arm cap, Tight Seat, 28213, 32.5"D x 34.75"H x 22.75"AH x 17.5"SH x 21"SD, COM 7.5 yards, Fabric: Architex, Highland Park, Marion - add moisture barrier. Wood arm: 48 Light Maple on Maple | 4 |
| CH-4 | Lounge Chair | David Edward | Aspen High back with wood arm cap, Tight Seat, 28123, 35.5"D x 42.75"H x 23.5"AH x 17.5"SH x 21"SD, COM 7.75 yards, Fabric: Architex, Highland Park, Barberry - add moisture barrier. Wood arm cap: 48 Light Maple on Maple | 4 |
| CH-7 | Task Chair | SitOnIt Seating | Torsa, Highback Mesh, Enhanced Synchro with Comfort Drive and Seat Depth Adjustment, Frame Color: Graphite, Mesh Color: Onyx, Arm Type: Multi-Adjustable Nylon, Base: Graphite Nylon, Standard Cylinder, Carpet Casters, Grade 2 Seat Fabric: Metro - Grand Central | 11 |
| CH-8 | Stack Chair | KI | Strive High Density Stack Chair, Polypropylene, SWNA, Seat & Back color: WS Wet Sand, Frame Color: Starlight Silver Metallic | 68 |
| CH-9 | Curved Lounge | Arcadia | Achella Modular, (6) High Back Lounge Chair, Armless 30-Degree Inside Wedge, 2751-H, 36.75" W x 28.5"D x 32.5"H x 18"SH, COM Fabric: ArcCom Intaglio 2, AC-61426 Ocean #37, Leg Finish: Metallic Silver #90, (2) 30-Degree Wide Tables, 2797, 28"W x 25.5"D x 16"H, Wood Veneer Finish: #11 Natural Beech on Maple, Leg Finish: Metallic Silver #90 | 1 |
| CH-10 | Sofa | Stuido Q | Zag Loveseat 4611-15, 58"W x 31"D x 34"H x 18.5"SH x 24.5"AH, COM Yardgage Req: 7.2 yards, COM Fabric: Sina Pearson, Cabana Stripe 267-27 Clementine, Wood leg finish: No. 88 Brazilwood | 4 |
| CH-12 | Chair - Stool | SitOnIt Seating | Focus Stool, Midback Mesh Task Stool, Extended Stool Kit, Frame Color: Silver, Mesh Color: Black, Mechanism: Basic, Arm Type: Armless, Carpet Casters, Grade 2 Seat Fabric: Metro, Grand Central | 1 |
| CH-13 | Height Adjustable Chair | VIA | MuvMan, Grey base, Black Microfiber seat, Seat surface: 13" x 12.6", Seat Height: 20" - 33", Weight capacity: 265 lbs | 1 |
| CH-15 | Bar Ht Chair | Arcadia | Upward, 3125, Low Back Wood Seat w/ Upholstered Seat Cushion, 15.5"W x 17"D x 37"H x 30.75"SH, 1/2 Yd COM, Fabric: DLCouch Wizard UHMO-WZ-01, Aubergine. Wood Finish: #01 Pure White. Metal frame finish: 90 Metallic Silver | 6 |
| CH-16 | Youth Study Chair | TMC Furniture | Wyoming Chair - Child 16" SH, SWYC11314, 21" W x 17"D x 28.25" H, Tier A Cutout: TRI-C-DIN.T, Wood Finish: Clear 01, Metal Legs: Appliance White 01, Glides: E Grey | 4 |
| CH-16A | Youth Study Chair | TMC Furniture | Wyoming Chair - Child 16" SH, SWYC11314, 21" W x 17"D x 28.25" H, Tier A Cutout: Tulip-BAC.U, Wood Finish: Clear 01, Metal Legs: Appliance White 01, Glides: E Grey | 4 |
| CH-16B | Youth Study Chair | TMC Furnture | Wyoming Chair - Child 14" SH, SWYC11314, 21" W x 17"D x 28.25" H, Tier A Cutout: TRAIN-TRA.T, Wood Finish: Clear 01, Metal Legs: Appliance White 01, Glides: E Grey | 6 |
| CH-16C | Tween Study Chair | TMC Furniture | Wyoming Chair - Child 16" SH, SWYC11314, 21" W x 17"D x 28.25" H, No Cutout, Wood Finish: Clear 01, Metal Legs: Appliance White 01, Glides E Grey | 8 |
| CH-17 | Conference Chair | Allimur | Circo Conference Chair with Dynamic Yoke and Casters, Black Nylon Chair Frame, Black 5 Star Base with Castors, Black Hard Wheeled Castors, Standard Black Mesh, COM Seat Fabric: ArcCom, Itajime AC-61550, #11 Coal | 13 |
| D-1 | Transport Dolly | KI | Transport Dolly, CSD.BL, 22-3/8"W x 25-5/8"D | 3 |
| G-1 | Game | Gressco | Small Activity Cube, Y107200008, 24-1/2"H x 20-1/2"W x 20-1/2"D | 1 |
| GG-1 | Game | Gressco | Magnetic Plan Panels, Y1061814 Road Trip, Frame Color: Natural | 1 |
| GG-2 | Game | Gressco | Magnetic Plan Panels, Y1061815 Tic Tac Toe, Frame Color: Natural | 1 |
| OT-4 | Square Ottoman | National | Whimsy, Square Ottoman, 22"x22", COM Fabric: Momentum, Kindred Color: Orangery | 6 |
| OT-4A | Square Ottoman | National | Whimsy, Square Ottoman, 22"x22", COM Fabric: ArcCom, Intaglio 2, AC-61426 Ocean #37 | 6 |
| OT-4B | Square Ottoman | National | Whimsy, Square Ottoman, 22"x22", COM Fabric: Maharam, Ellipsis 466334, 002 Dolphin | 3 |
| OT-5 | Ottoman | National | Whimsy Ottoman, 18"x18" Round, COM Fabric: DesignTex, Big Dot 3525-403 Indigo | 2 |
| P-1 | Planter | Magnuson Group | Crepe H, 47-5/8" x 18-1/8" x 15-3/4", Color: White | 5 |
| P-2 | Pillow | - | Fiber fill w/ self welt & concealed zipper. Fabric: Sina Pearson, Cabana Stripe 267-64 Honeydew, Size: 21"W x 9"H | 4 |
| T-3 | Coffee Table | Arcadia | Radiant Table, 17" Height 710 Series, 710-482017, Wood Finish: #11 Natural Beech on Maple | 1 |
| T-5 | Height Adjustable Table | SurfaceWorks | Stretch electric Height Adjustable Table, 25"-51" Range, Rectangle, 29"D x 64"W, WNS2-R-2964, Standard laminate: 276 Chelsea Gauze, Edge: 396 Charcoal, Leg Finish: 431 Metallic Silver | 1 |
| T-6 | Flip Top Table | Enwork | Base: Sensation Y-leg Flip Base Assembly with Crossbeam & Casters for 24" Deep Table, LMWY2460. Top: 24x60 with standard 3mm edge, no cable management, laminate top: Slate Grey, 3mm Edge Finish: Slate Grey, Leg Finish: Silver | 4 |
| T-7 | Flip Top Table | Fleetwood | Pin Height Adjustable Legs, Flip Top & Nesting, Locking Castors, Model # F1.6280.8xx.00, Plastic Laminate top: Trytoo Savatre, PVC edge: Graphite, Metal legs: QuickSilver | 16 |
| T-12 | Bar Ht. Table | Arcadia | Avelina Meeting Table, 42"H x 20"D x 60"W. Wood Finish: #19 Smoky Umber White Oak, A-206042 | 3 |
| T-14 | Youth Table | TMC Furniture | Plover Table, 36" Dia x 24"H, P24, Laminate Top, Laminate: Nevamar Aqua Lagoon S5059T, Maple Edgeband, TC36L20, Edge & Leg Wood Finish: Clear 01 | 1 |
| T-14A | Youth Table | TMC Furniture | Plover Table, 36" Dia x 26"H, P24, Laminate Top, Laminate: Nevamar Aqua Lagoon S5059T, Maple Edgeband, TC36L20, Edge & Leg Wood Finish: Clear 01 | 2 |
| TR-1 | Trash Unit | Safco | Squarefecta, (2 Units) Public Square 2982BL Base, 31 Gallon, Black, 32"H, (1) Laser Cut Lid labeled: "WASTE", (1) Laser Cut Lid labeled: "RECYCLE" | 5 |
| Bid Package 2: Library Furnishings 2 | | | | |
| CH-14 | Swivel Lounge | Kimball | Bloom Chair, K781XA, One Seat Lounge, COM Fabric: DesignTex, Gamut 3468-301 Color: Fire Engine, Add Moisture Barrier Back, Base Finish: Platinum Metallic 501 | 3 |
| CH-14A | Swivel Lounge | Kimball | Bloom Chair, K781XA, One Seat Lounge, COM Fabric: DesignTex, Gamut 3468-405 Color: Deep Ocean, Add Moisture Barrier Back, Base Finish: Platinum Metallic 501 | 2 |
| CH-14B | Swivel Lounge | Kimball | Bloom Chair, K781XA, One Seat Lounge, COM Fabric: Architex, Oxide Red, Base Finish: Platinum Metallic 501 | 1 |
| CH-14C | Swivel Lounge | Kimball | Bloom Chair, K781XA, One Seat Lounge, COM Fabric: Architex, Oxide Hydro, Base Finish: Platinum Metallic 501 | 1 |
| T-4 | Laptop Table | Kimball | Bloom Soft-Rectangular Pull-Up, K781TRSC221626, 22"D x 16"W x 26"H, Top Finish: CO Canyon Oak, Leg Finish: Platinum Metallic 501, PVC edge to match top. | 15 |
| Bid Package 3: Library Furnishings 3 | | | | |
| BH-1 | Booth | Steelcase | Campfire Lounge, TS3BC, 32"D x 66"W x 29"H, COM Seat Fabric: Anzea, Techy 7009-03 Navy Blue, COM Back Fabric: Architex, 57 Chevron Agave | 2 |
| CH-5 | Lounge Chair & Footrest | Steelcase | Brody Privacy Lounge & Footrest, Handedness: Right, Foot: Platinum Metallic, 4799, Screen Brackets: Platinum Metallic 4799, Frame: Sterling Dark 7250, Lower Surround Trim: Platinum Solid 6249, Seat Shell: Sterling Dark Solid 6059, Personal Worksurface: Sterling Dark Solid 6059, Personal Worksurface Arm: Paltinum Metallic 4799, Caddy: Sterling Dark 7250, Back of Caddy: Merle 7360, Power: Sterling Dark 7250, Seat Upholstery COM: ArcCom Omega AC-61161 Fog #2 , Screen: Acrylic 6559 Satin Ice, Lower Surround Upholstery: Boocie, New Rice P200, Upper Footrest COM: Momentum, Canter Tango, Lower Footrest: 6059 Sterling Dark, Light: 4799 Platinum, Side Surface: 2536 Blackwood | 2 |
| CH-6 | Computer Chair | Steelcase | Move Chair Upholstered seat with arms, with glides, 490412, 20.25"D x 21"W x 31.5"H x 18.5"SH, Frame Paint: Platinum Metallic 4799, Back Plastic: Sterling Dark Solid 6059, COM Seat: Momentum, Kindred Color: Orangery | 26 |
| CH-6A | Guest Chair | Steelcase | Move Chair Upholstered seat with arms, with glides, 490412, 20.25"D x 21"W x 31.5"H x 18.5"SH, Frame Paint: Platinum Metallic 4799, Back Plastic: Sterling Dark Solid 6059, Seat Price Group 1: Buzz2, Tomato 6F03 | 3 |
| CH-6B | Computer Chair | Steelcase | Move Chair armless, 490410F, 20.25"D x 21"W x 31.5"H x 18.5"SH, Frame Paint: Platinum Metallic 4799, Back Plastic: Arctic White 6009, COM Seat: Maharam, Ellipsis 466334, Dolphin 002 | 6 |
| CH-6C | Study Room Chair | Steelcase | Move Chair armless, 490410F, 20.25"D x 21"W x 31.5"H x 18.5"SH, Frame Paint: Platinum Metallic 4799, Back Plastic: Sterling Dark Solid 6058, COM Seat: DesignTex, Interlock 3506-701 Kumquat | 8 |
| T-13 | Booth Table | Steelcase | Lagunitas, COLAGTRECT, Work Table, 57"W x 36"D x 26"H, Non Powered, Laminate Top: 2898 Satin Stainless, Vinyl Edge: to match laminate top, Base Paint: Platinum Matte 4135 | 1 |
| Bid Package 4: Systems Furniture | | | | |
| F-1 | File/File | HON | Flagship Series Pedestal "R" Pull Freestanding F/F, Standard Random Key Lock, Paint: Loft | 3 |
| LC-1 | Lectern | HON | Motivate presentation cart standing height adjustable leg, 2mm edge, Laminate: Steel Mesh, 2mm Edgeband: Charcoal, Frame Paint: Platinum Metallic Textured, Motivate presentation cart modesty panel, Finish: Platinum Metallic Textured. Motivate presentation cart shelf Dbl 4" closed back/9" closed back, Finish: Platinum Metallic Textured. Motivate presentation cart desktop lectern 2mm edgeband, Laminate: Steel Mesh, Paint: Platinum Metallic Textured. | 1 |
| LF-1 | Lateral File with top | HON | (2) Brigade 800 Series Lateral File 2 Drawer, 42" W, Standard Key Lock, Platinum Metallic Paint, (1) Plastic Laminate top with Square edge - 84"W x 19.25"D, Laminate: Brilliant White | 1 |
| MB-1 | Mobile Whiteboard | HON | Motivate Mobile Whiteboard, HMMVB-3672WW, 36"W x 72"H, 2 sided mobile whiteboard, Porcelain over steel with four locking casters, Includes marker tray and flip-chart paper clips, Grade 1 Paint: Platinum Metallic Textured. | 2 |
| T-10 | Conference Room Table | HON | Preside, 10' L x48"W, Laminate Rectangular Top, Knife Edge, Preside Laminate Hollow Panel Base for 120" W Table Tops, (2) Preside Pop Up Port- MHO power stations, wire management | 1 |
| T-15 | Bar Ht. Table | HON | Preside, 36" Dia Round Table Top, 42" High, Laminate top:A9 Steel Mesh, and PVC edge: Charcoal, Metal X base, Finish: Platinum Metallic T1 | 1 |
| WK-1 | Workstations | HON | Accelerate 6' x 5' workstations, Rectangular worksurfaces: 24"x72" & 30" x 60", Worksurface finish: Laminate A9 Steel Mesh, Worksurface 3mm edgeband: Charcoal. See HON plans for grommet locations and workstation layout, Grommet color: Black. Power down the spine, hardwired. (2) power/data receptacles per workstation. Tackable panels 65" H and 35"H at each end of the Table Fabric: Sarto SR164 Red, Panel Paint trim: Loft. Painted steel overhead with locking flipper door. Finish: Loft, Size: 15"H x 13"D x 72"W. Metal Box Box File, Finish: Loft, Size: 28"H x 22-7/8"D x 15"W. Metal center drawer/pencil drawer, Finish: Loft, Size: 19"W x 14"D. Each workstation keyed alike. Open leg, Finish: Loft. Workstation on West end of room to have (1) wallmounted tackboard, Size: 72"W x 18.5"H, Fabric: tbd. | 1 |
| WK-2 | Private Office Workstation | HON | 10500 Series. Rectangular worksurface 24"x 72", laminate with matching 3mm edgeband, Laminate: Brilliant White. (2) Wall mounted overhead storage with doors, Laminate: Natural Maple, Size: 36" W x 14-5/8"D. Wardrobe Storage Cabinet, Laminate: Natural Maple, Size: 24"W x 24"D x 66-5/8"H. 2-Drawer Lateral File, Laminate: Natural Maple, Size: 36"W x 24"D x 29.5"H. 3 stage adjustable height table, electric, Laminate top: Brilliant White, 3mm edgeband to match top, Size: 30"x60", Leg Finish: Platinum Metallic, Mixed material modesty panel, 42"x 14", frosted acrylic. Wall mounted tackboard, 72"W, Fabric: Etch ECH02 Engrave, Key alike all storage, See HON plans for grommet locations, grommet color: white. Provide wire managment trough for height adjustable table. Door and drawer pulls to be Platinum Metallic. | 1 |
| WK-3 | Private Office Workstation | HON | 10500 Series. Rectangular worksurface 24"x72", laminate with matching 3mm edgeband, Laminate: Brilliant White. (2) Wall mounted overhead storage with doors, Laminate: Natural Maple, Size: 36"W x 14-5/8"D. Wardrobe Storage Cabinet, Laminate: Natural Maple, Size: 24"W x 24"D x 66-5/8"H. (2) 2-Drawer Lateral File, Laminate: Natural Maple, Size: 36"W x 24"D x 29.5"H. O-leg support for return worksurface, Finish: Platinum Metallic, Mixed material floating modesty panel, Finish: frosted acrylic, Size: 36" x 14". Wall mounted tackboard, 72"W, Fabric: Etch ECH02 Engrave. Key alike all storage. See HON plans for grommet locations, grommet color: white. Provide wire managment trough for return worksurface. Door and drawer pulls to be Platinum Metallic. | 1 |
| WK-4 | Workstation | HON | 10500 Series. Rectangular worksurface 36"x72", laminate with matching 3mm edgeband, Laminate: Natural Maple. (1) Wall mounted overhead storage with doors, locking, Laminate: Natural Maple, Size: 36"w x 18.5". Wallmounted tackboard 72"W, Fabric: Etch, ECH02 Engrave | 1 |
| Bid Package 5: Library Equipment | | | | |
| BD-1 | Book Drop | Kingsley | 60 Series DualDrop Divided Aluminum Alloy ergoCart, 31.125"L x 34.125"W x 38.125"H, Capacity: 350 Books & 590 Jewel Cases | 1 |
| BD-2 | Book Drop | Kingsley | 40 Series easyRoller Aluminum Alloy Rolling Bln, 26" square x 28.5"H, Capacity: 220 Books or 540 Media Jewel Cases | 2 |
| Bid Package 6: Bookstacks | | | | |
| DF-42A | 42" Double Faced Steel Shelving System | MJ Industries | EAST Face of Section - Base Shelf: 24" deep (nominal), closed base. Adjustable Shelves: 12" deep (nominal), 2 per face, equally spaced. Other: (2) Magbrowz trays per section by others. Book Supports: none. WEST side of Section - Base Shelf: 24" deep (nominal), closed base. Adjustable Shelves: 10" deep (nominal), 2 per face, equally spaced. Flat with integral back with standard features. Book Supports: Wire book support, include 1 per shelf, including each side of base shelf. Color: 3000 Oyster. End Panels & Canopy Tops by others, provide mounting brackets. Magbrowz Trays by others. | 4 |
| DF-42B | 42" Double Faced Steel Shelving System | MJ Industries | EAST Face of Section - Base Shelf: 32" deep (nominal), closed base. Adjustable Shelves, North End of Row, 4 sections: 10" deep (nominal), 2 per face, equally spaced. Book Supports: Wire book support, include 1 per shelf, including each side of base shelf. Adjustable Shelves, South end of Row, 4 Sections: 14" deep (nominal), divider type shelves, 2 per face, equally spaced. WEST Face of Section - Base Shelf: 32" deep (nominal), divider type base. Adjustable Shelves: 14" deep nominal, divider type shelves, 2 per face, equally spaced. Book Suports: none. Color: 3000 Oyster. End Panels & Canopy Tops by others, provide mounting brackets. | 8 |

| Furniture by Type | | | | |
|-----------------------------------|--|---------------|---|-------|
| SYMBOL | Type | Manufacturer | DESCRIPTION | COUNT |
| DF-42C | 42" Double Faced Steel Shelving System | MJ Industries | Each Side of Face - Base Shelf: 32" deep (nominal), divider type base. Adjustable Shelves: 14" deep (nominal), divider type shelves, 2 per face, equally spaced. Book Supports: none. Color: 3000 Oyster. End Panels & Canopy tops by others, provide mounting brackets. | 24 |
| DF-42D | 42" Double Faced Steel Shelving System | MJ Industries | Each Face of Section - Base Shelf: 32" deep (nominal), closed base. Adjustable Shelves: 28" deep (nominal), through-shelf, 2 per face, equally spaced. Flat with standard features. Book Supports: none. Color: 3000 Oyster. End Panel & Canopy Tops by others, provide mounting brackets. | 12 |
| DF-48 | 48" Double Faced Steel Shelving System | MJ Industries | Each Face of Section - Base Shelf: 24" deep (nominal), closed base. Adjustable Shelves: 10" deep (nominal), 2 per face, equally spaced. Flat with intergral back with standard features. Book Supports: Wire book support, include 1 per shelf, including each side of base shelf. Color: 3000 Oyster. End Panels & Canopy Tops by others, provide mounting brackets. | 8 |
| DF-66 | 66" Double Faced Steel Shelving System | MJ Industries | Each Face of Section - Base Shelf: 20" deep (nominal), closed base. Adjustable Shelves: 10" deep (nominal), 4 per face, equally spaced. Flat with intergral back with standard features. Book Supports: Wire book support, include 1 per shelf, including each side of base shelf. Color: 3000 Oyster. End Panels & Canopy Tops by others, provide mounting brackets. | 20 |
| DF-66A | 66" Double Faced Steel Shelving System | MJ Industries | Each Face of Section - Base Shelf: 24" deep (nominal), closed base. Shelves: Fixed Periodical shelves, 3 per face. Flat storage shelves, 2 per face, 1 each below fixed shelf, equally spaced with standard features. Book Supports: none. Color: Custom to match Bibliomodel Artic White. End Panels & Canopy Tops by others, provide mounting brackets. | 9 |
| DF-66B | 66" Double Faced Steel Shelving System | MJ Industries | EAST Face of Section - Base Shelf: 24" deep (nominal), closed base. Adjustable Shelves, top 2: Zig-Zag Display shelf, equally spaced with standard features. Book Supports: none. Adjustable Shelves, bottom 3: 8" deep (nominal), Flat with intergral back and standard features. Book Supports: Wire book support, include 1 per shelf, including each side of base. WEST Face of Section, first 4 sections on North side of row - Base shelf: 24" deep (nominal) closed base. Shelves: Fixed periodical shelves, 3 per face. Flat storage shelf, 2 per face, 1 each below fixed periodical shelf. Equally spaced with standard features. Book Supports: none. WEST Face of Section, First 4 sections on South side of row - Base Shelf: 24" deep, closed base. Adjustable shelves: 10" deep (nominal), 5 per face. Flat with integral back, equally spaced with standard features. Book Supports: Wire book support, include 1 per shelf, including each side of base. Color: Oyster. End Panels & Canopy Tops by others, provide mounting brackets. | 8 |
| DF-66C | 66" Double Faced Steel Shelving System | MJ Industries | Each Face of Section - Base Shelf: 24" deep (nominal), closed base. Adjustable Shelves: 12" deep (nominal), 4 per face, equally spaced. Flat with integral back and standard features. Book Supports: Wire book support, include 1 per shelf, including each side of base shelf. Color: Oyster. End Panels & Canopy Tops by others, provide mounting brackets. Other: (4) Magbrowz Trays by others at east end of row on the 1st section on the North side for CDs. | 8 |
| DF-66D | 66" Double Faced Steel Shelving System | MJ Industries | Each Face of Section - Base Shelf: 24" deep (nominal), closed base. Adjustable Shelves: 12" deep (nominal), 4 per face, equally spaced. Flat with integral back and standard features. Book Supports: Wire book support, include 1 per shelf, including each side of base shelf. Color: Oyster. End Panels and Canopy Tops by others, provide mounting brackets. | 40 |
| DF-66E | 66" Double Faced Steel Shelving System | MJ Industries | Each Face of Section - Base Shelf: 20" deep (nominal), closed base. Adjustable Shelf: 10" deep (nominal), 4 per face, equally spaced. Flat with integral back and standard features. Book Supports: Wire book supports, include 1 per shelf, including each side of base shelf. Color: 3000 Oyster. End Panels & Canopy Tops by others, provide mounting brackets. | 12 |
| DF-66F | 66" Double Faced Steel Shelving System | MJ Industries | EAST Face of Section - Base Shelf: 20" deep (nominal), closed base. Adjustable Shelf: 10" deep (nominal), 4 per face, equally spaced. Flat with intgral back & standard features. Book Supports: Wire book supports, include 1 per shelf, including each side of base shelf. WEST Face of Section - Base Shelf: 20" deep (nominal), closed base. Adjustable Shelf: 10" deep (nominal), divider type shelves, 4 per face. Book Supports: None. Color: 3000 Oyster. End Panels & Canopy Tops by others, provide mounting brackets. | 3 |
| DF-84 | 84" H Double Faced Steel Shelving System | MJ Industries | Each Face of Section - Base Shelf: 20" deep (nominal), closed base. Adjustable Shelves: 10" deep (nominal), 6 per face, equally spaced. Flat with intergral back with standard features. Book Supports: Wire book support, include 1 per shelf, including each side of base shelf. Color: 3000 Oyster. End Panels & Canopy Tops by others, provide mounting brackets. | 68 |
| SF-66 | 66" Single Faced Steel Shelving System | MJ Industries | Each Face of Section - Base Shelf: 12" deep (nominal), closed base. Adjustable Shelves: 10" deep (nominal), 4 per face, equally spaced. Flat with integral back with standard features. Book Supports: Wire book support, include 1 per shelf, including each side of base shelf. Color: 3000 Oyster. End Panels & Canopy Tops by others, provide mounting brackets. | 7 |
| SF-84 | 84" Single Faced Steel Shelving System | MJ Industries | Each Face of Section - Base Shelf: 12" deep (nominal), closed base. Adjustable Shelves: 10" deep (nominal), 6 per face, equally spaced. Flat with integral back with standard features. Book Supports: Wire book support, include 1 per shelf, including each side of base shelf. Color: Oyster. End Panels by others, provide mounting brackets. Note: All single faced shelving to be anchored to the wall. | 3 |
| Bid Package 7: A-frame Bookstacks | | | | |
| DF-54 | 54" Double Faced A-frame Shelving System | Bibliomodel | 54"H x 36"W Elements A Frames. 5 rows high. 6"D sloped flat shelves. Steel back panels. Steel color: Artic White 04DK 411-03. 4"H Signage. End Panels by other - provide mounting brackets. | 20 |
| DF-54A | 54" Double Faced A-frame Shelving System | Bibliomodel | 54"H x 36"W Elements A Frames on Casters. 4 rows high. 8"D sloped flat shelves. Steel back panels. Steel Color: Artic White 04DK 411-03. 4" Signage. End Panels by other - provide mounting brackets. | 4 |
| DF-54B | 54" Double Faced A-frame Shelving System | Bibliomodel | 54"H x 36"W Elements A Frames. 4 rows high. 8"D Browser with 5 compartment and rubber mat. Steel back panels. Steel color: Artic White 04DK 411-03. 4" Signage. End Panels by other - provide mounting brackets. | 3 |
| SF-54 | 54" Single Faced A-frame Shelving System | Bibliomodel | 54"H x 36"W Elements A Frames. 5 rows high. 8"D sloped flat shelves. Steel back panels. Steel Color: Artic White 04DK 411-03. 4"H Signage. End Panels byother - provide mounting brackets. * At Book Sale Only: SteelMaster Lock Box with Check Slot for Book Sale Shelving. 10"W x 4.75"D x 2.875"H, Grey, Keyed Lock. | 13 |

596

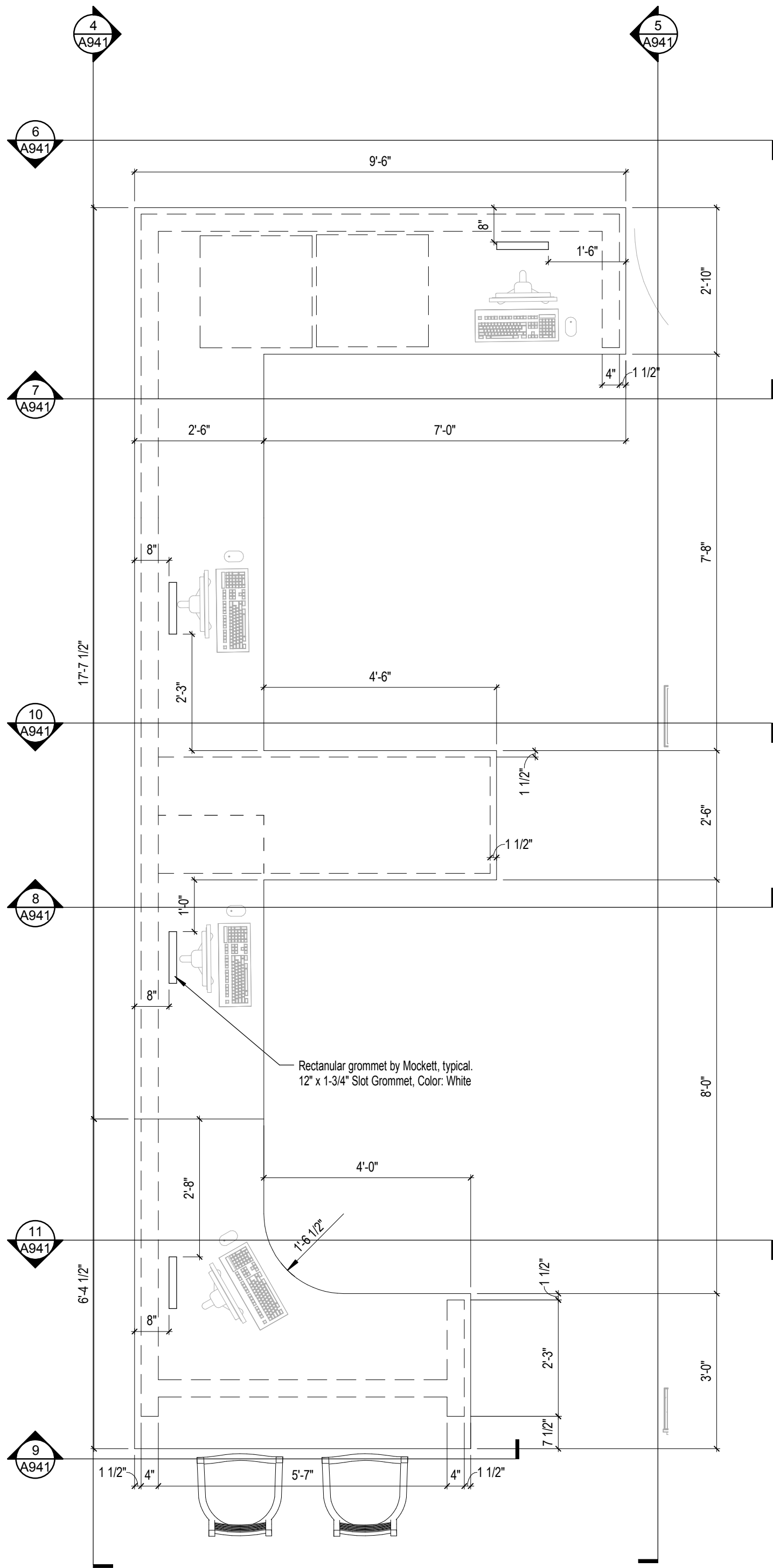
© Plunkett Raysich Architects, LLP

Platteville Public Library - Furnishings
W Main St & N Chestnut St
Platteville, WI 53818

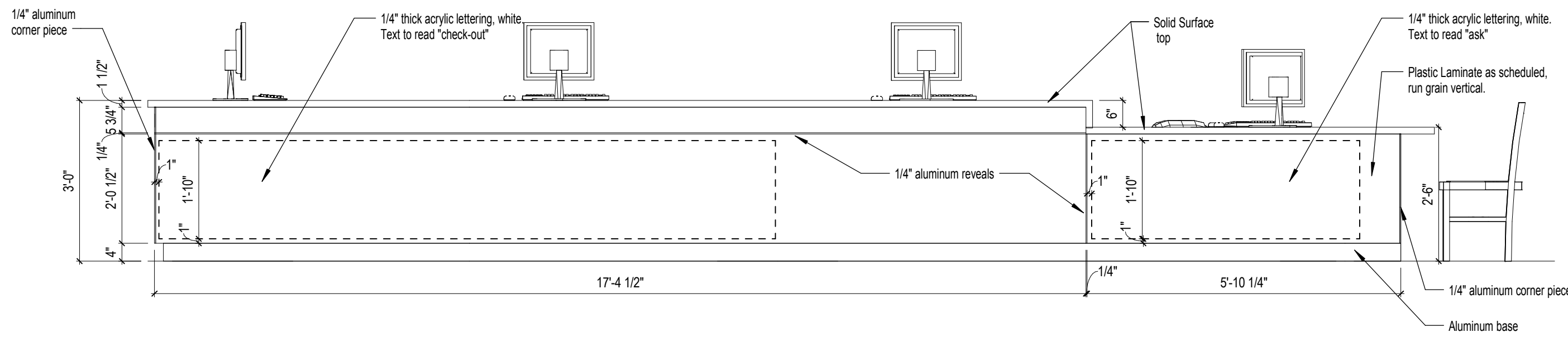
209 south water street milwaukee wisconsin 53204 414 359 3560
2310 crossroads drive suite 2000 madison wisconsin 53718 608 240 9900
1613 fruitville road suite 3 sarasota florida 34236 941 348 9618
intelligent designs. inspired results. | www.prarch.com

prarch
PLUNKETT RAYSICH
ARCHITECTS, LLP

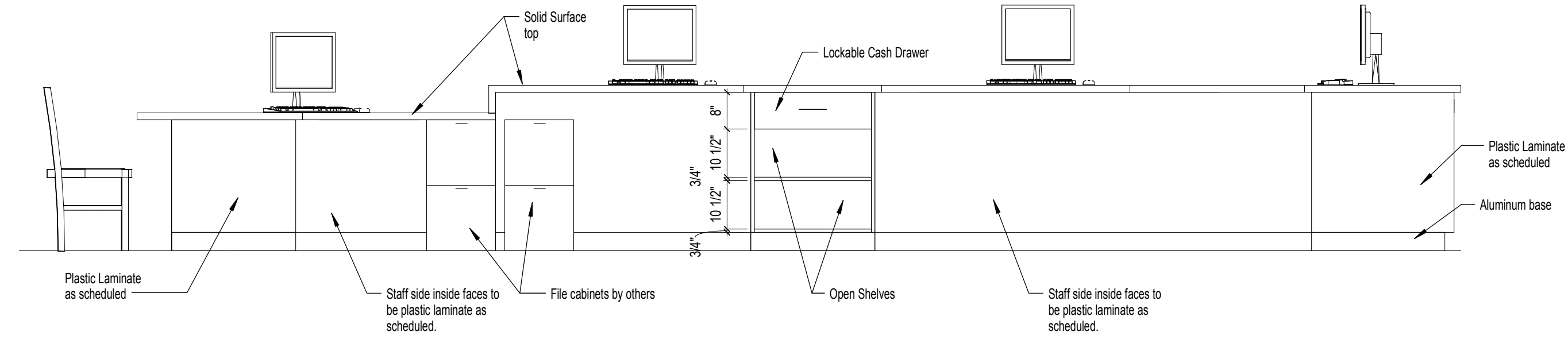
| |
|-----------------------|
| Revisions |
| Drawn By: LF |
| Date: 27 Jun 16 |
| Job No.: 130328-03 |
| Sheet No.: A931 |



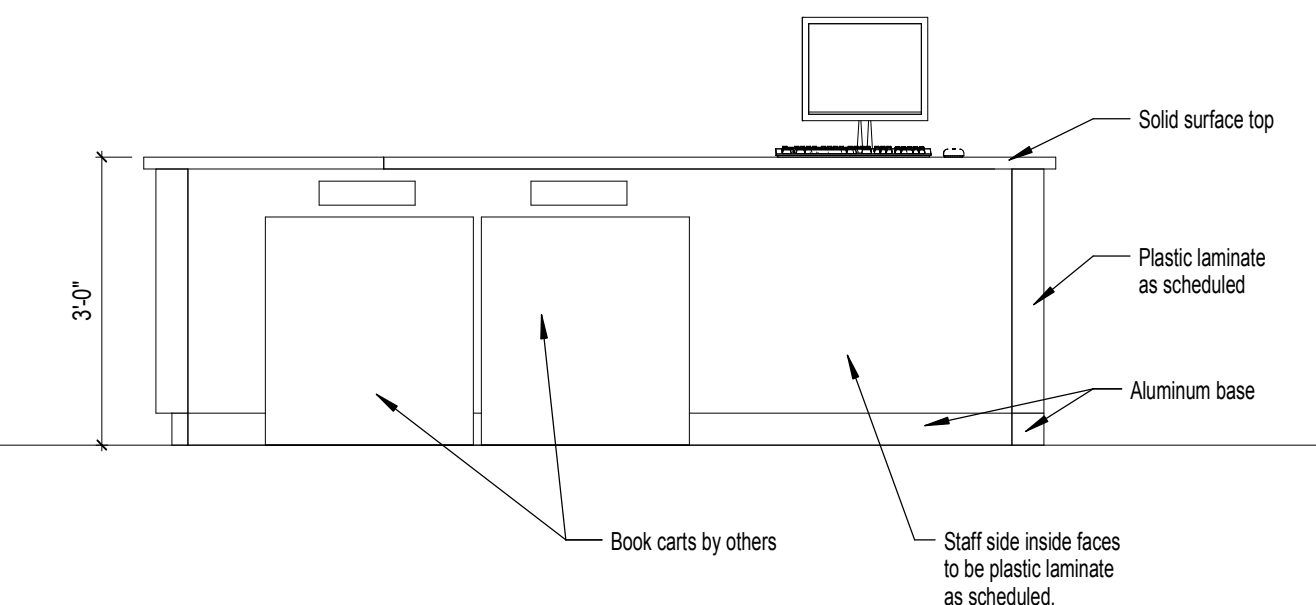
12 CDK-1 FLOOR PLAN
A941 1/2" = 1'-0"



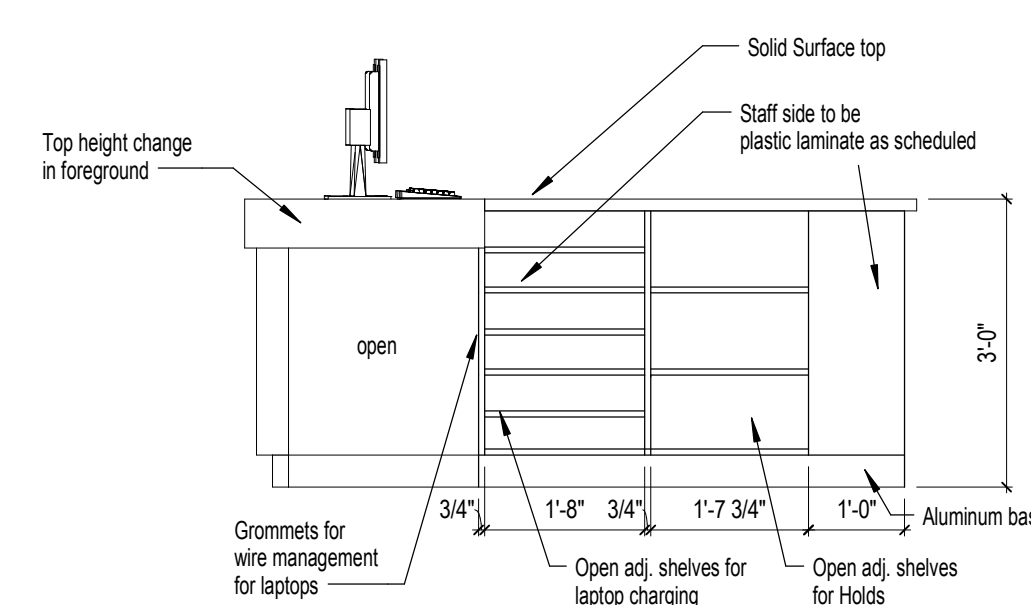
4 CDK-1 Front Elevation
A941 1/2" = 1'-0"



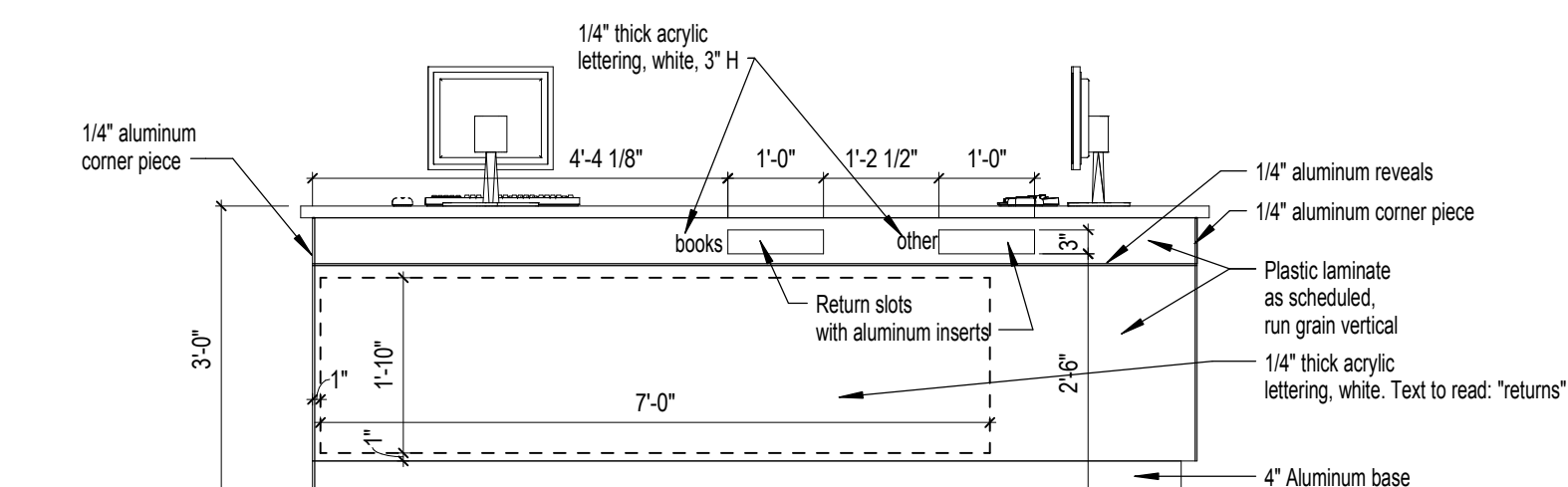
5 CDK-1 Staff Side Elevation
A941 1/2" = 1'-0"



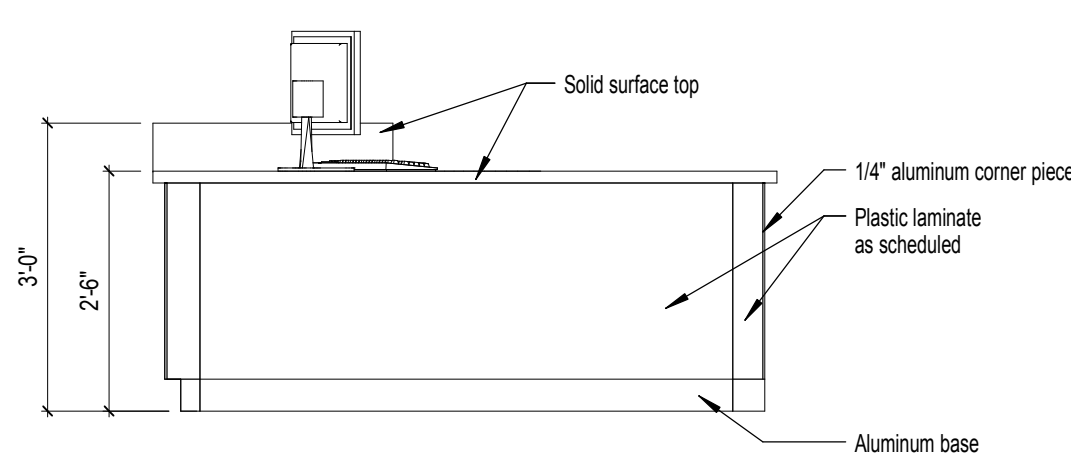
7 CDK-1 Staff Side Elevations at Returns
A941 1/2" = 1'-0"



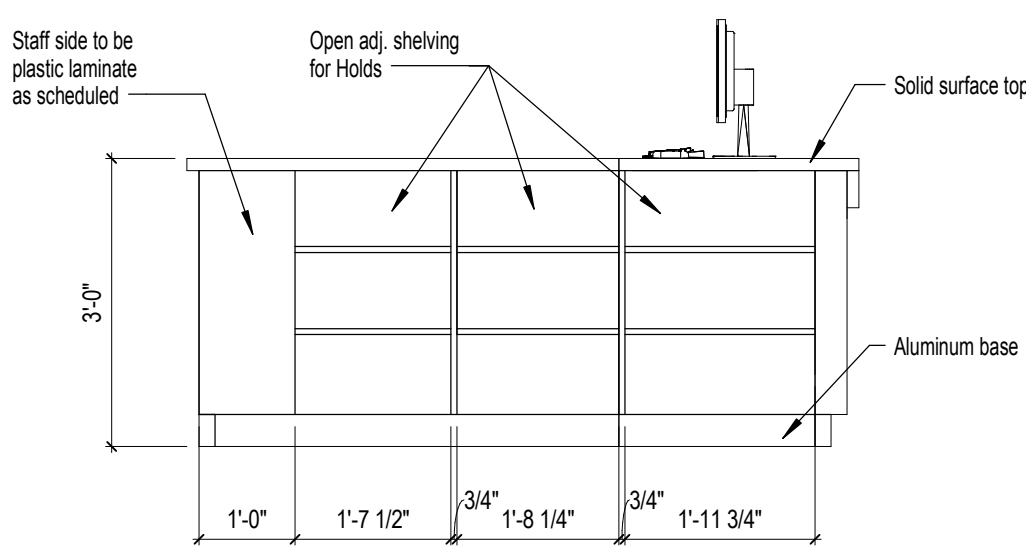
8 CDK-1 Staff Side Elevation at Island
A941 1/2" = 1'-0"



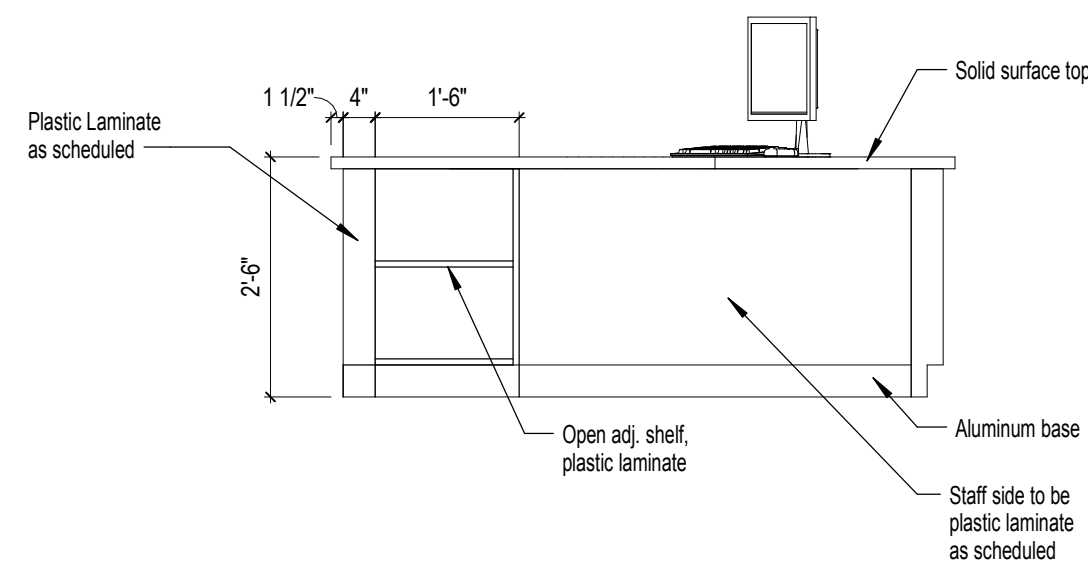
6 CDK-1 Side Elevation at Returns
A941 1/2" = 1'-0"



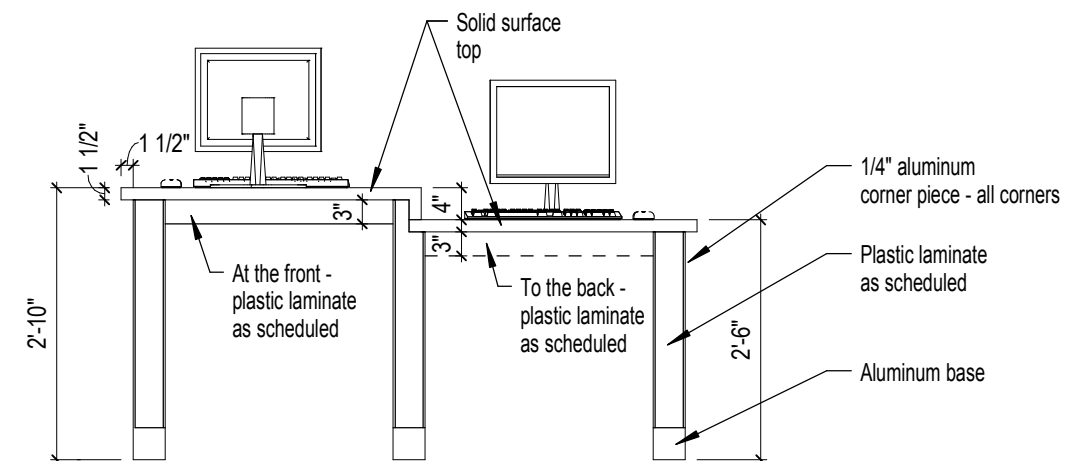
9 CDK-1 Patron Side Elevation at Info Desk
A941 1/2" = 1'-0"



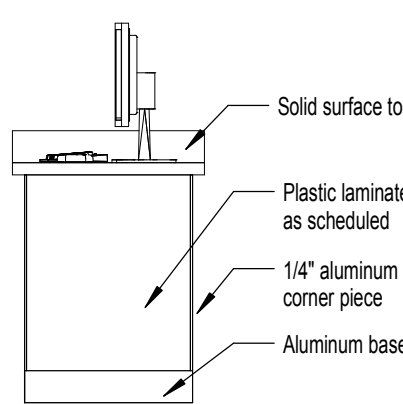
10 CDK-1 Staff Side Elevation at Island Cash Drawer
A941 1/2" = 1'-0"



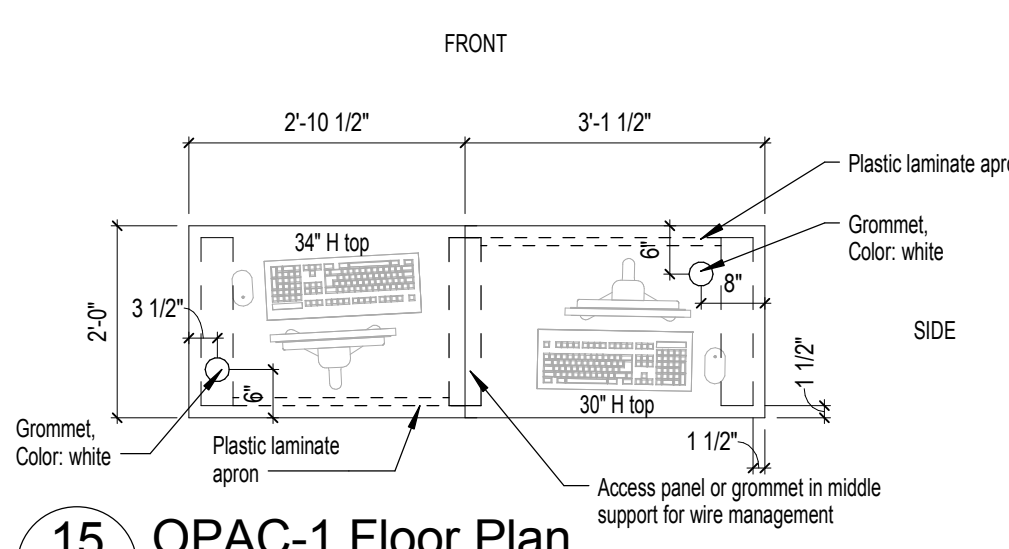
11 CDK-1 Staff Side Elevation at Info Desk
A941 1/2" = 1'-0"



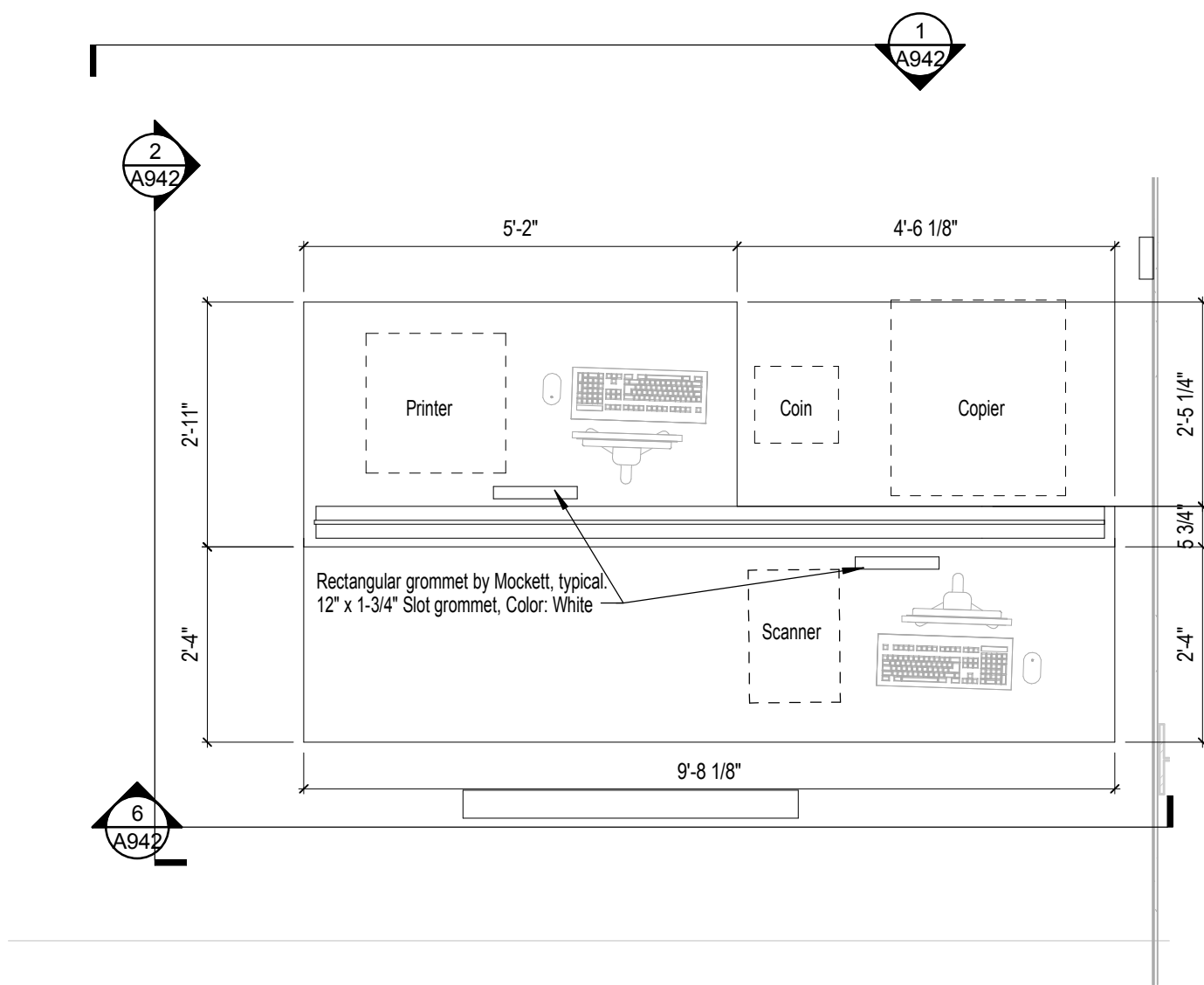
13 OPAC-1 Front Elevation1
A941 1/2" = 1'-0"



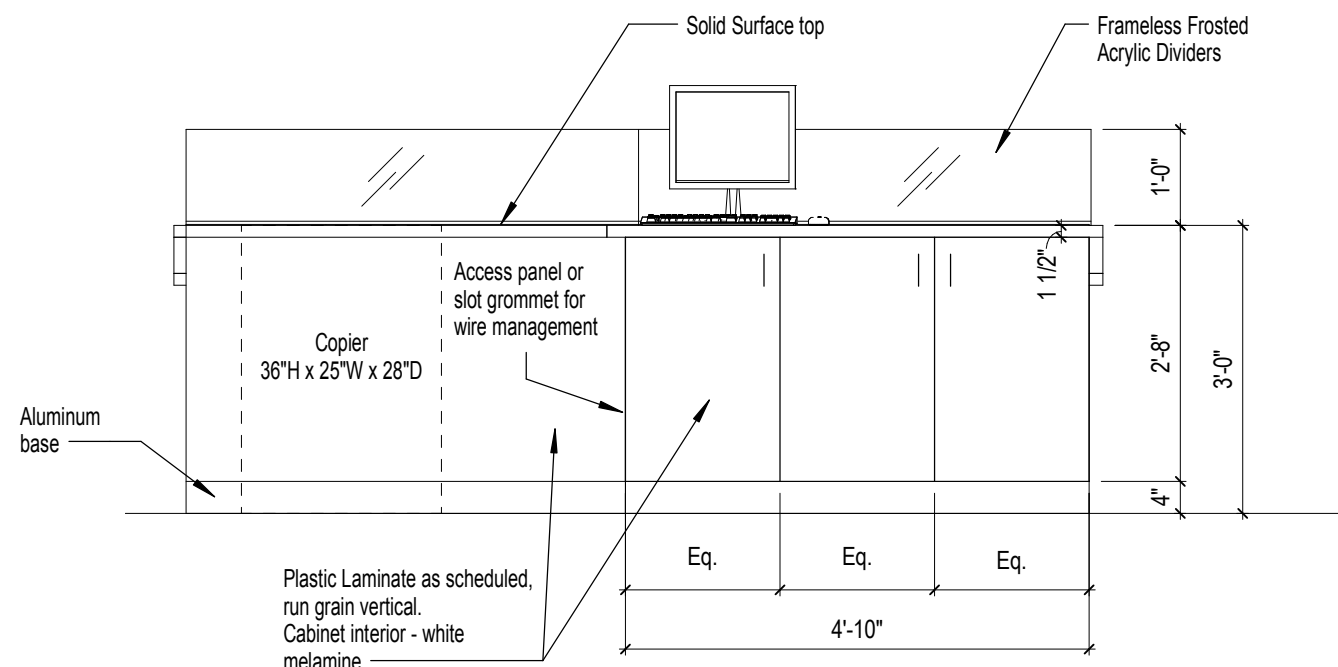
14 OPAC-1 Side Elevation1
A941 1/2" = 1'-0"



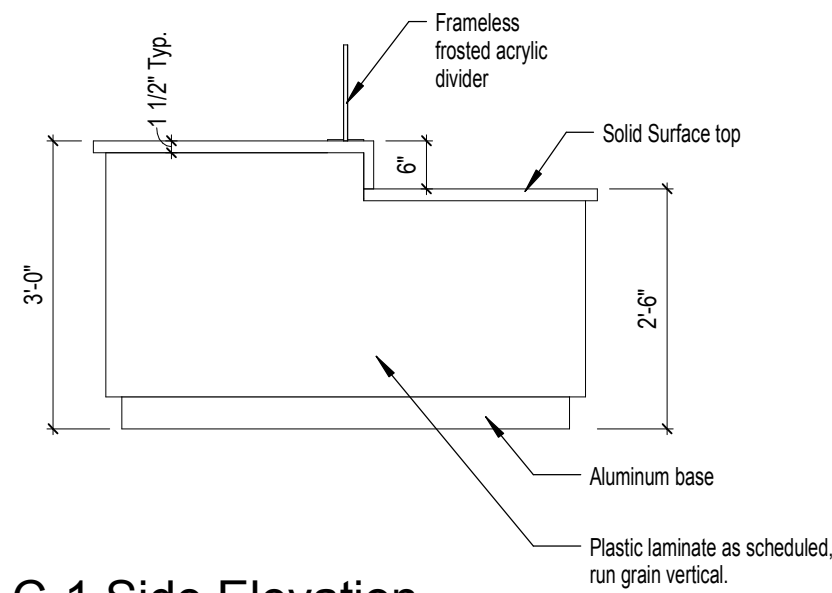
15 OPAC-1 Floor Plan
A941 1/2" = 1'-0"



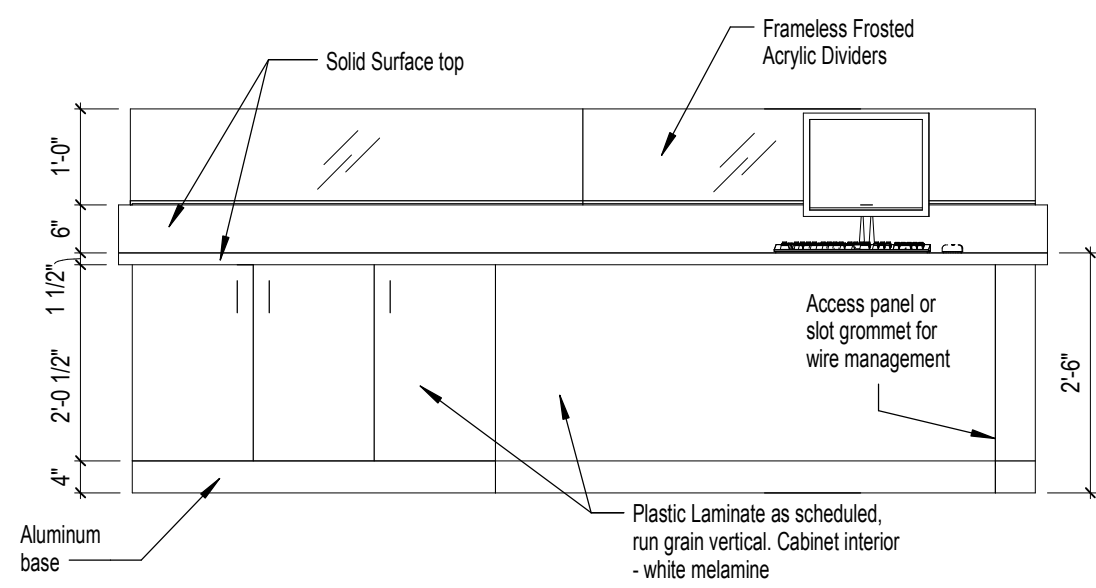
7
A942
C-1 PLAN
1/2" = 1'-0"



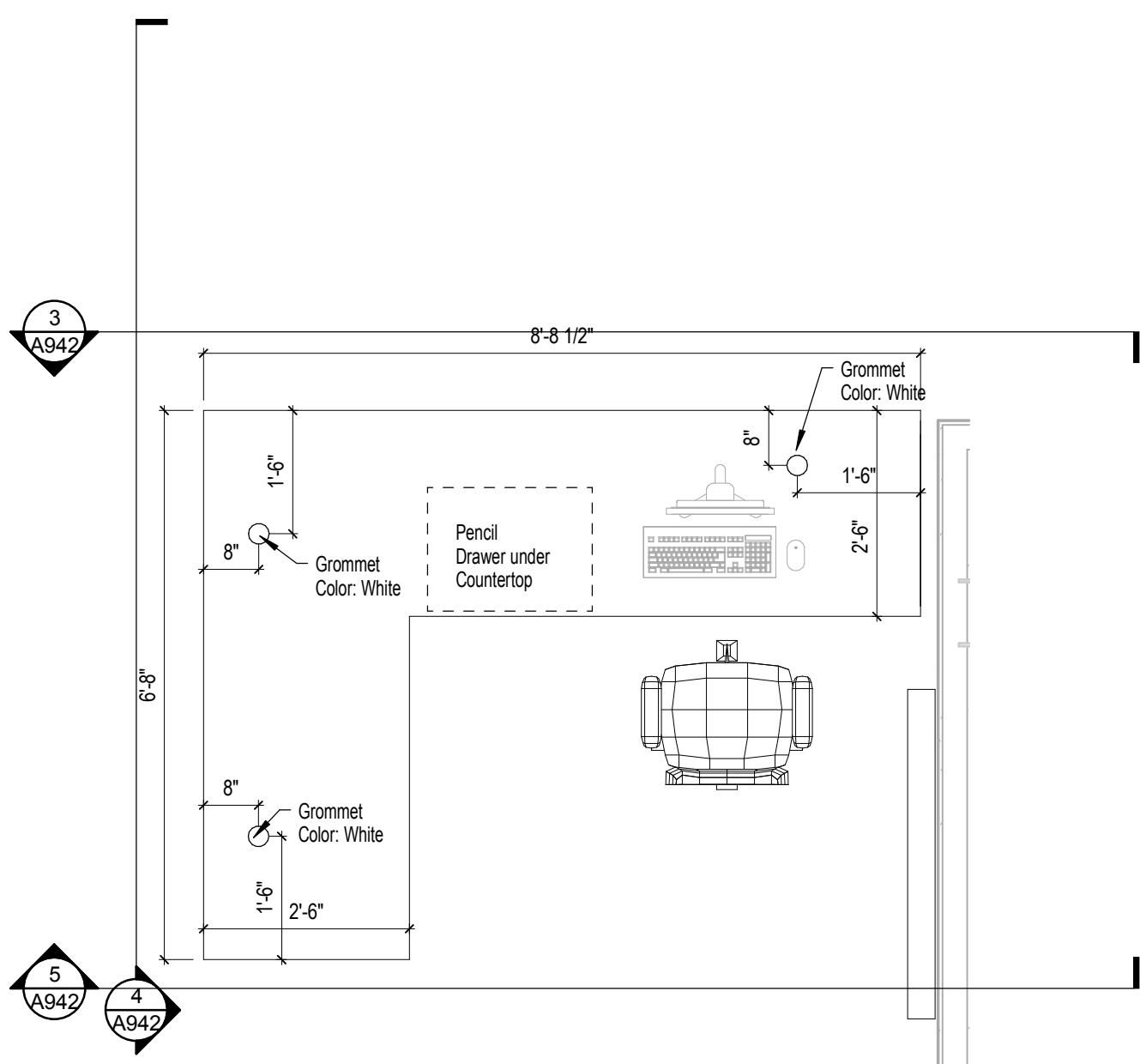
1
A942
C-1 Front Elevation Copier Side
1/2" = 1'-0"



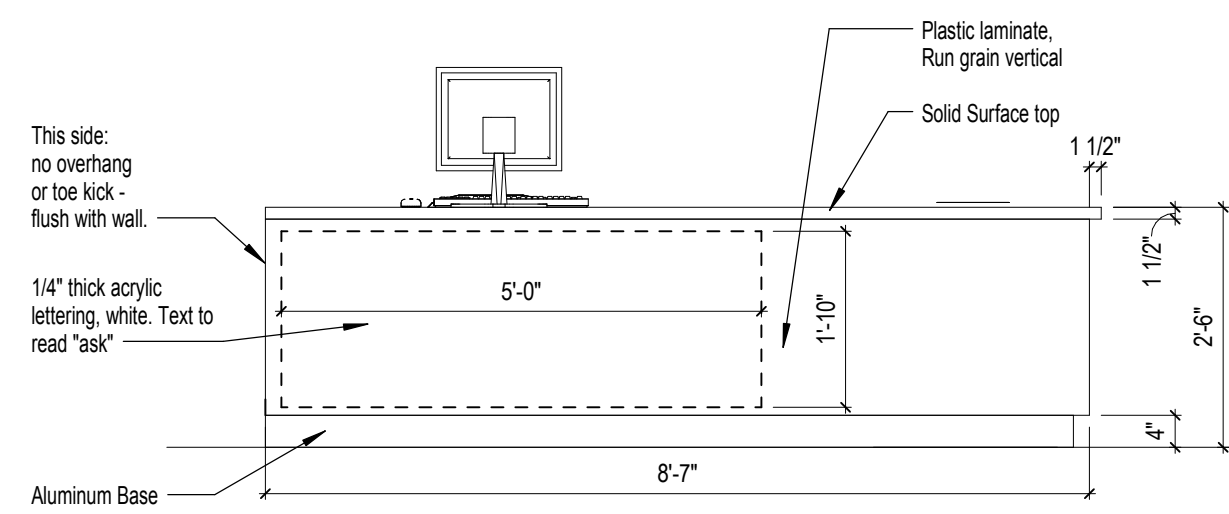
2
A942
C-1 Side Elevation
1/2" = 1'-0"



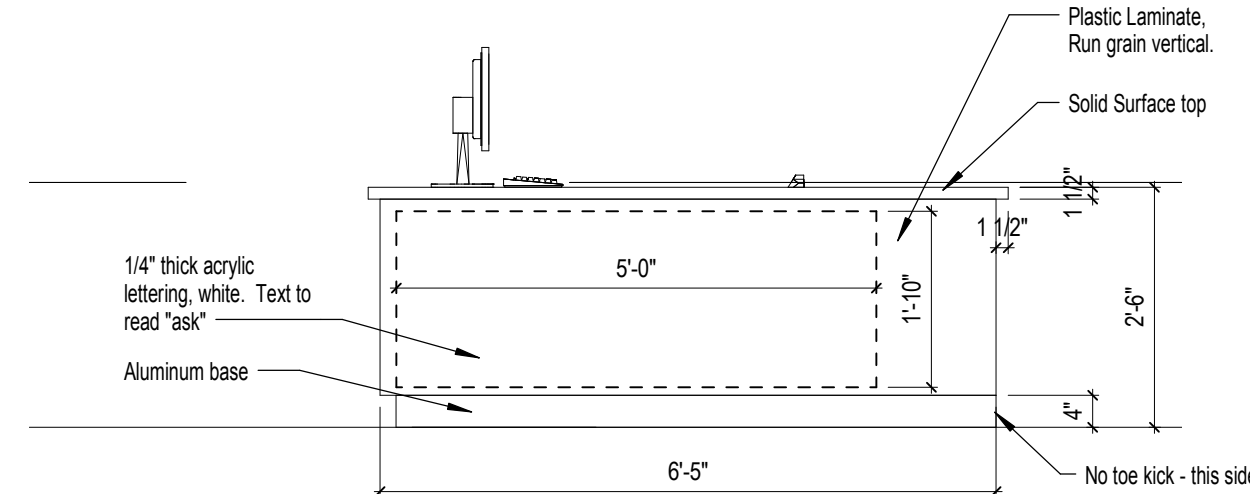
6
A942
C-1 Front Elevation Scanner Side
1/2" = 1'-0"



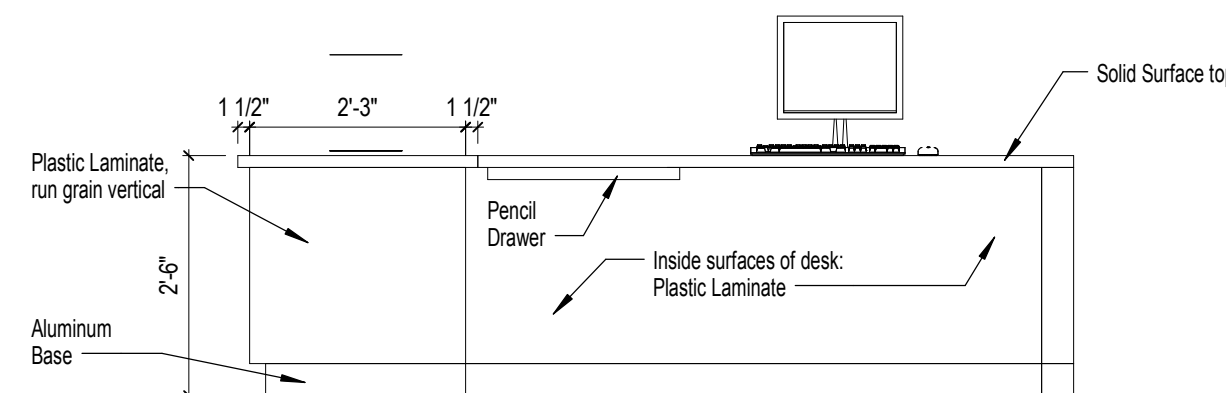
8
A942
SD-1 PLAN
1/2" = 1'-0"



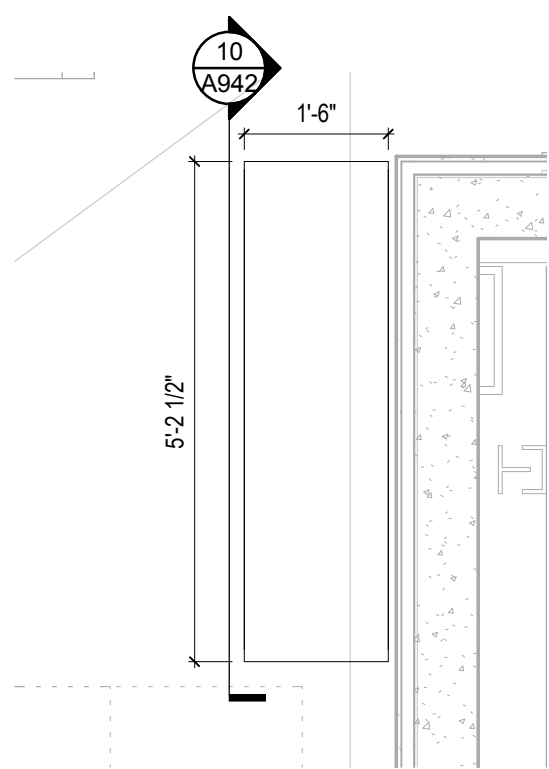
3
A942
SD-1 Front Elevation
1/2" = 1'-0"



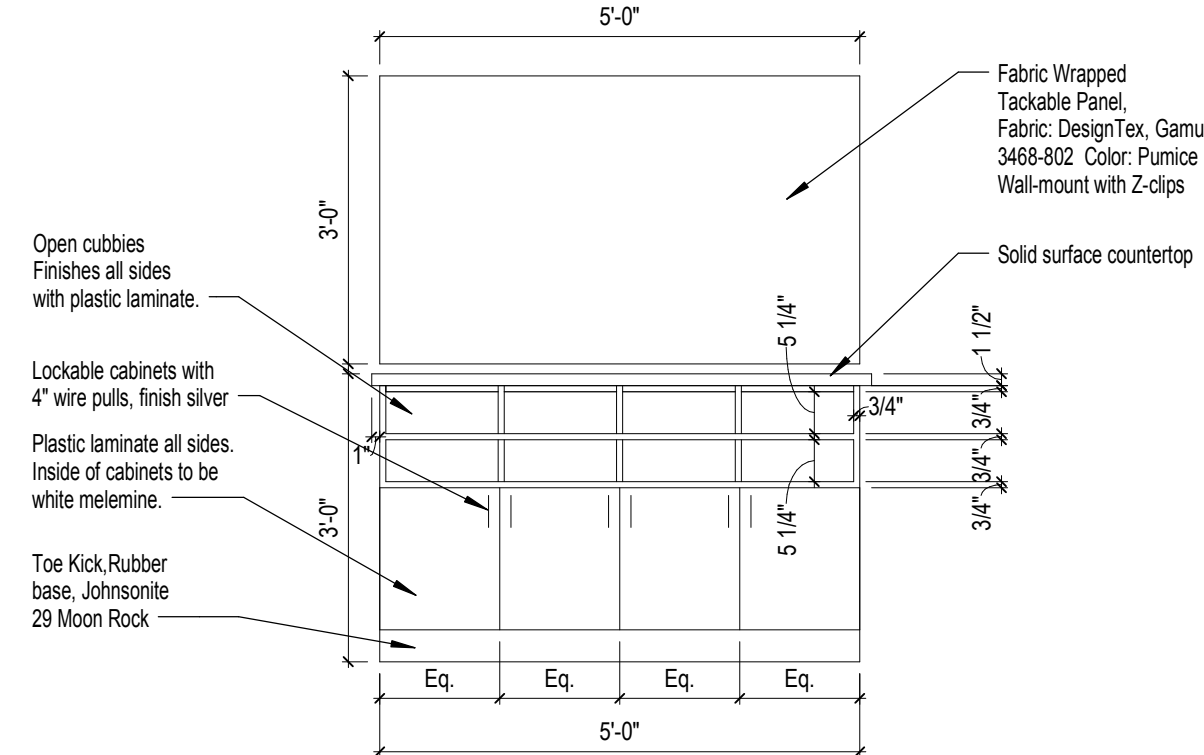
4
A942
SD-1 Side Elevation
1/2" = 1'-0"



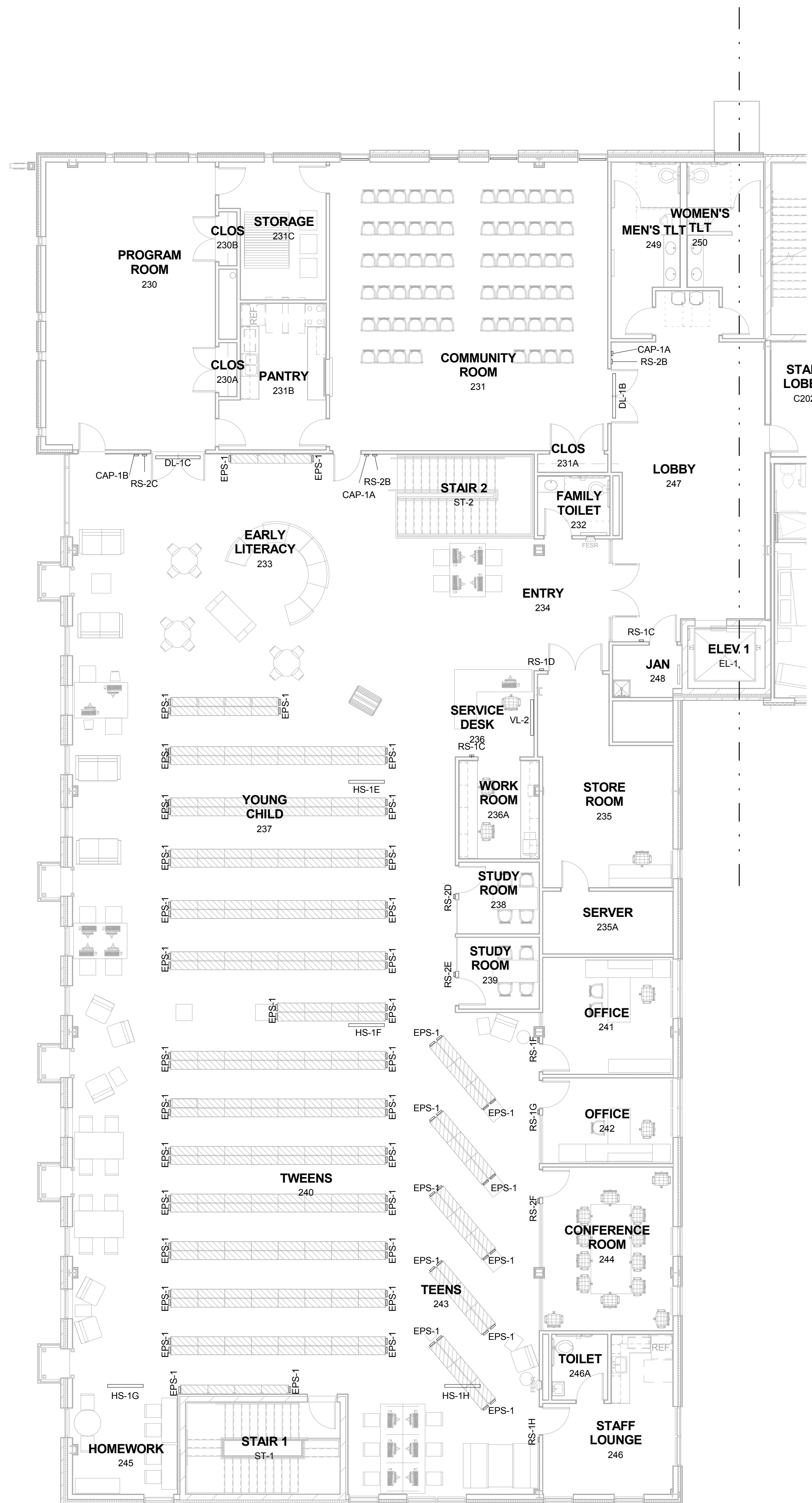
5
A942
SD-1 Staff Side Elevation
1/2" = 1'-0"



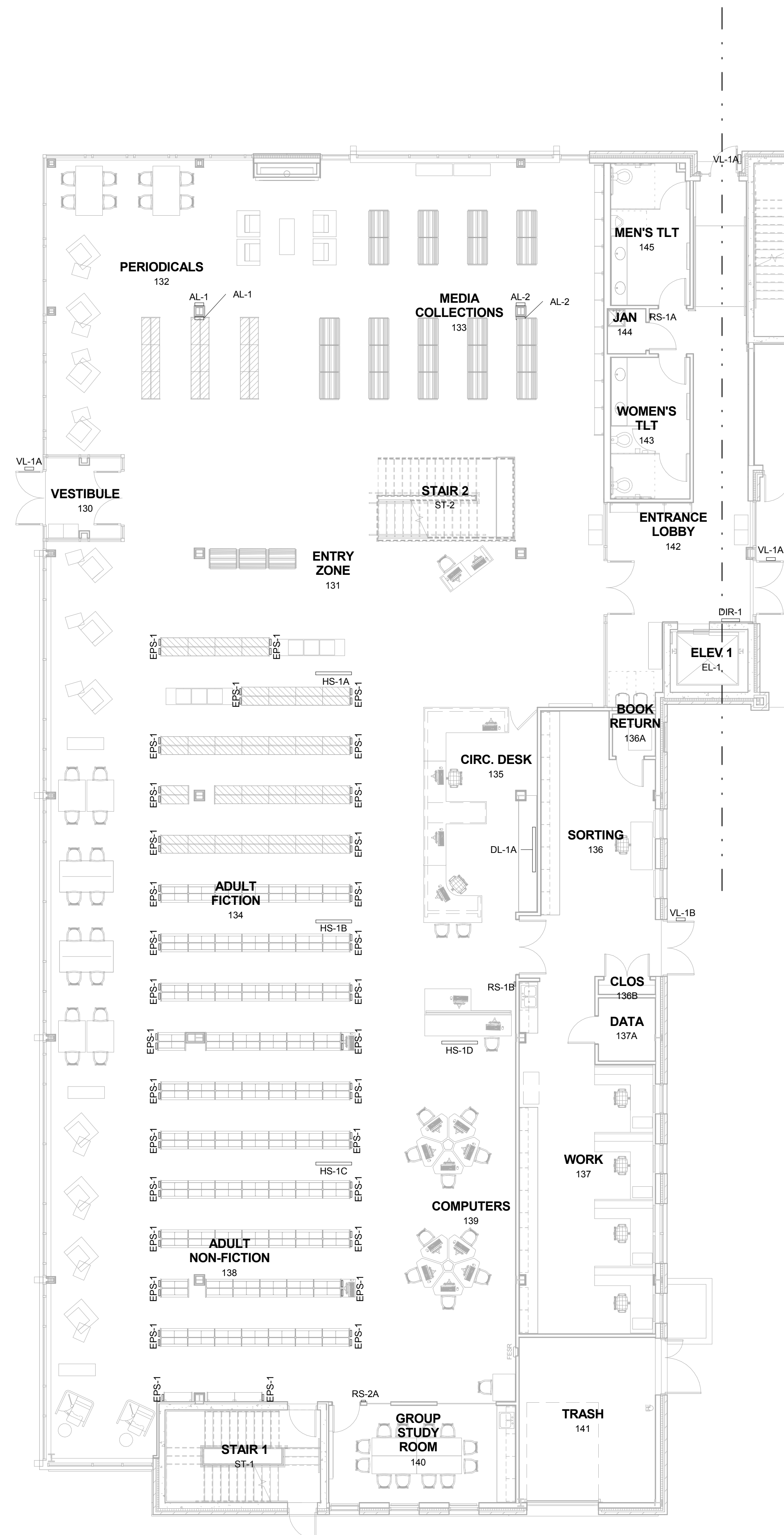
9
A942
ST-1 PLAN
1/2" = 1'-0"



10
A942
ST-1 Front Elevation
1/2" = 1'-0"



2 SECOND FLOOR SIGNAGE PLAN - LIBRARY
A951 1/8" = 1'-0"



1 FIRST FLOOR SIGNAGE PLAN - LIBRARY
A951 1/8" = 1'-0"