



Platteville Inclusive Playground Project



Platteville Inclusive Playground Steering Committee

- Steering Committee Co-Leaders:
 - Morgan Arnold
 - Christina Burr
 - Kim Zielinski
- Steering Committee Members:
 - Jaimie Andrews
 - Kayla Dietzel
 - Jordan Holthaus
 - Sarah Imobersteg
 - Jason Julius
 - Nick Pease
 - Liz Peters
 - Jacob Rosemeyer
 - Rob Serres
 - Sam Villeneuve
- Parks and Recreation Liaison: Luke Peters
- Non Profit Organization Partner: Inspiring Community Inc.
- Inspiring Community Inc. Mentor: Gene Weber

Inclusive Playground Features:

- Designed to create a safe space for families where people of all ages and abilities can enjoy time together
- Incorporates play features for children from toddler age to teenager
- Inclusive design
- Poured in place rubber for accessibility
- Fenced for added safety

Inclusive Playground Advantages:

- Encourage Everyone to Join in the Fun
 - Designed for physical and social inclusion
 - Helps break down barriers that prevent people with special needs from being able to play with their able bodied peers
- Incorporate the Whole Community
 - Empowers and integrates people from different backgrounds and with different needs to play together.
 - Gives a safe and accessible play space for all to enjoy
- Develop Sensory and Cognitive Skills
- Promote a Healthy Active Lifestyle
- Peace of Mind for Caregivers



Burke
PLAY THAT MOVES YOU.

3RD TO 5TH AREA - AUBURNDALE ELEMENTARY SCHOOL

PROPOSAL #142-136052-2

Wisconsin Inclusive Park Example 1--Auburndale, WI



Burke
PLAY THAT MOVES YOU.

4K TO 2ND AREA - AUBURNDALE ELEMENTARY SCHOOL

PROPOSAL #142-136051-2

Wisconsin Inclusive Park Example 2--Auburndale, WI



BUTTS PARK

PROPOSAL #142-125843-4

Wisconsin Inclusive Park Example 3--Tomah, WI



**Wisconsin Inclusive Park
Example 4--Oconomowoc, WI**



Future Wisconsin Inclusive Park Current active project



Miracle League of Dubuque Inclusive Park

*pic credit: City of Dubuque

Platteville Inclusive Playground

Features:

- Inclusive design welcomes families of all abilities
- Fenced for added safety and peace of mind
- Poured in place rubber for accessibility
- New and exciting play equipment
 - Zip lines
 - Musical play
 - Sensory play
 - Climbing Challenges
 - Imaginative Play
 - Inclusive swings and spinners
- Shade
- Incorporates Healthy Walking Path
- Rural Farm Theme



COLOR KEY

●	STRUCTURE
●	TRAIL
●	SLIDE
●	CLIMB
●	SHADING
●	LANDSCAPE
●	SAFETY MAT



Platteville Inclusive Park – Lee Recreation Preliminary Design View 1



Platteville Inclusive Park – Lee Recreation Preliminary Design View 2



**Platteville Inclusive Park – Park Planet
Preliminary Design View 1**



**Platteville Inclusive Park – Park Planet
Preliminary Design View 2**



Inclusive Park Equipment Examples



Inclusive Park Equipment Examples



Inclusive Park Equipment Examples

Platteville Inclusive Playground

Project Plan Overview:

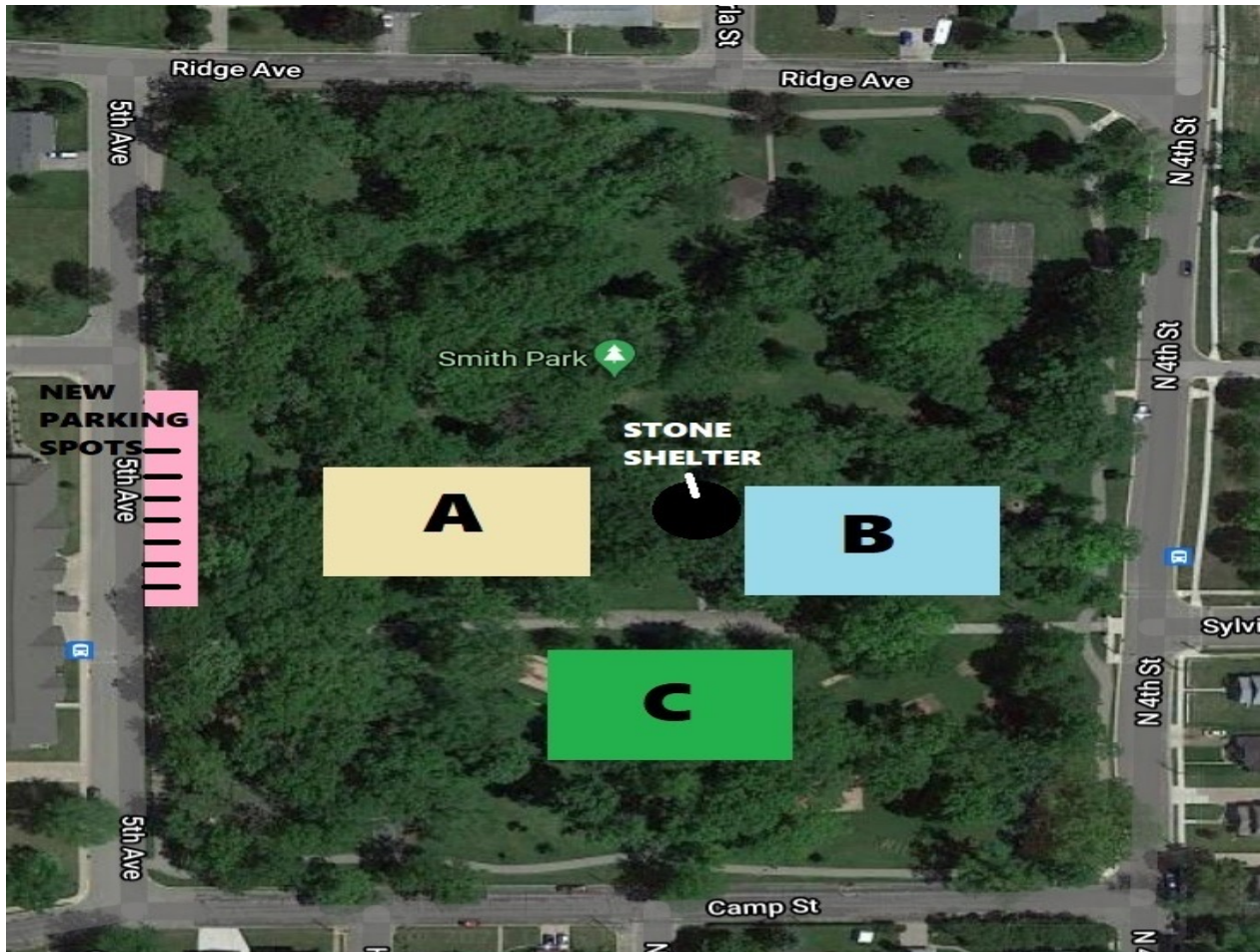
- Fundraise:
 - Will have a 3 tier design and build based on the amount we fundraise— minimum build design, better design and ideal/best design
 - Estimated Cost for Ideal/best design is ~ \$1 Million in playground equipment cost plus cost of lighting, parking, fencing, electrical, engineering etc
 - If we do not meet our minimum build fundraising goal then we will use any money donated to enhance the inclusiveness of our current parks
 - We have partnered with Inspiring Community Inc. as our non-profit organization
- Bid:
 - We would like to choose from 3 design proposals of equal value. We have preliminary designs from Lee Recreation, MidStates Recreation and Park Planet
- Build:
 - Goal Installation Timeline: Fall 2022, subject to change based on supplies
 - Estimated Size: Roughly 175 ft. x 125 ft. play space plus 6 ft walking path
 - Preferred Location: Smith Park

Steering Committee Top Locations for Platteville Inclusive Playground:

1. Smith Park Option C
2. Smith Park Option B
3. Smith Park Option A
4. Legion Park

Smith Park Location Options:

Steering Committee Preferred Location: Location C





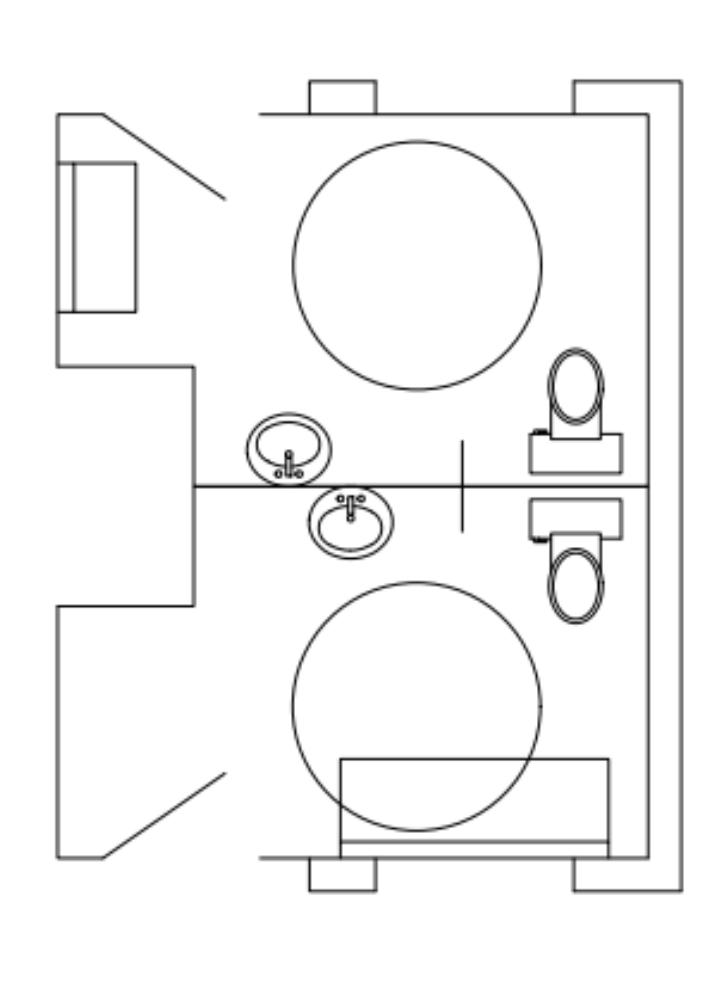
Smith Park

Playground Location Considerations:

- Smith Park:
 - Pros:
 - Plenty of Green Space to allow Freedom of Design
 - In the Main Channel of Summer Activity that flows between Smith the Pool and Legion
 - Relatively flat space for excavation
 - In close proximity to schools, making for easier access by students and teachers
 - Bike path leads very close to Smith Park so would be a safe route for kids and families to take to the park
 - Current playground equipment would be relocated to enhance other Platteville parks
 - Potential Access to Trust Funds to assist our project that are designated for Smith and Legion Parks
 - Cons:
 - Some trees would likely need to be removed but we would plant a new one in a different part of the park for every tree that had to be removed
 - Extra Costs to Consider:
 - Remodeling stone shelter bathrooms ~\$80,000
 - Relocation of current playground equipment ~\$33,000
 - Addition of accessible parking ~\$35,000-\$82,000

Stone Shelter Bathroom Remodel Plan:

Transition to 2 Family Bathrooms. One with an infant changing table and one with an adult/special needs changing table





Legion Park

Legion Park Location Option A:



Playground Location Considerations:

- Legion Park:
 - Pros:
 - Accessible Bathrooms already at Broske Center
 - Off Street Parking which is ideal for accessibility
 - Hub of Summer Activity
 - Potential Access to Trust Funds to assist our project that are designated for Legion and Smith Parks
 - Cons:
 - Some may feel the park is already full
 - Parking is already a challenge with multiple activities
 - Green Space is limited
 - Extra Costs to Consider:
 - Expanding Parking Lot ~\$150-\$200K
 - Addition of an special needs changing table in each restroom ~\$12,000

Other Playground Park Locations We Considered:

- Prairie View Park
- Harrison Park
- Valley View Park
- Mound View Park

The Steering Committee does not recommend these parks for the Platteville Inclusive Playground location due to a combination of challenges in terrain, parking, bathroom facilities, parental concerns, location and increased building cost estimations.

Recent Updates:

- As of October 18th :
 - Platteville Parks, Forestry and Recreation Committee voted to officially support the Platteville Inclusive Playground project
 - Platteville Parks, Forestry and Recreation Committee voted in favor of Smith Park as the project's preferred location.

Next Steps:

- What we are asking of City Council:
 - Approval to proceed with and the Council's support of the Platteville Inclusive Playground project as a City project
 - Confirm a Park Location for the Inclusive Playground project. Our Steering Committee along with the Platteville Parks, Forestry and Recreation Committee recommend Smith Park.
 - We cannot accept donations until we have a confirmed location and we are ready to begin fundraising.

Wrap up:

- Want More Information?

- Facebook: Platteville Inclusive Playground
- Email: plattevilleinclusiveplayground@gmail.com
 - Thank you for your time
 - Any questions?