

2024 Platteville Bike & Pedestrian Plan

Platteville Plan Commission
March 4, 2024



Purpose

1. Identify the city's long-range bicycle and pedestrian vision
2. Update the 2009 Safe Routes to School Plan
3. Identify recommendations for future bike & pedestrian infrastructure
4. Explore options for developing a bike and pedestrian loop

Planning Process

1. Map crash data, sidewalks & crosswalks, and the student population
2. Identify gaps and risk areas
3. Identify community interests and concerns



Engagement

- 7 focus groups
- 1 township meeting
- 1 open house
- 120 members of the public engaged

- Community Safe Routes Committee recommended approval February 19, 2024



Bike & Pedestrian Goals

Transportation Vision:

Create a safe and accessible multi-modal transportation network for all users

Objectives:

Variety of choices

Interconnected trails

Commuter and recreational

Access to basic life needs



Bike lane



ADA curb ramp



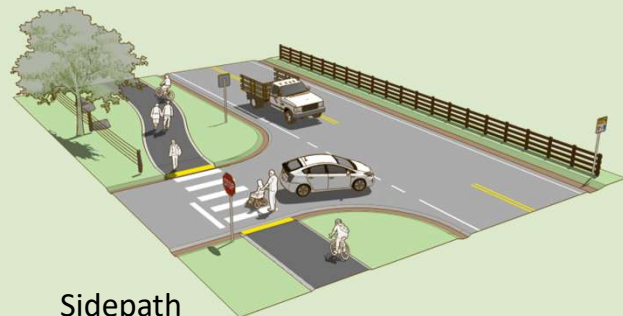
Sharrow



RRFB



Yield roadway



Sidepath



Existing Infrastructure

- 53.4 miles of sidewalks and park sidewalks
- 12.7 miles of multi-use trails
- 222 crosswalks
- 683 ADA curb ramps
- 0.25 miles of sharrows
- 0.79 miles of bike lanes
- 5 rectangular rapid flashing beacons



Recommendations



Policies – Sidewalk Location

	Local	Collector	Arterial
Neither Side (Yield Roadway)	✓		
One Side	✓	✓	
Both Sides	✓	✓	✓

Collector
Camp, Hickory,
4th

Minor Arterial
Ridge, Main,
Mineral

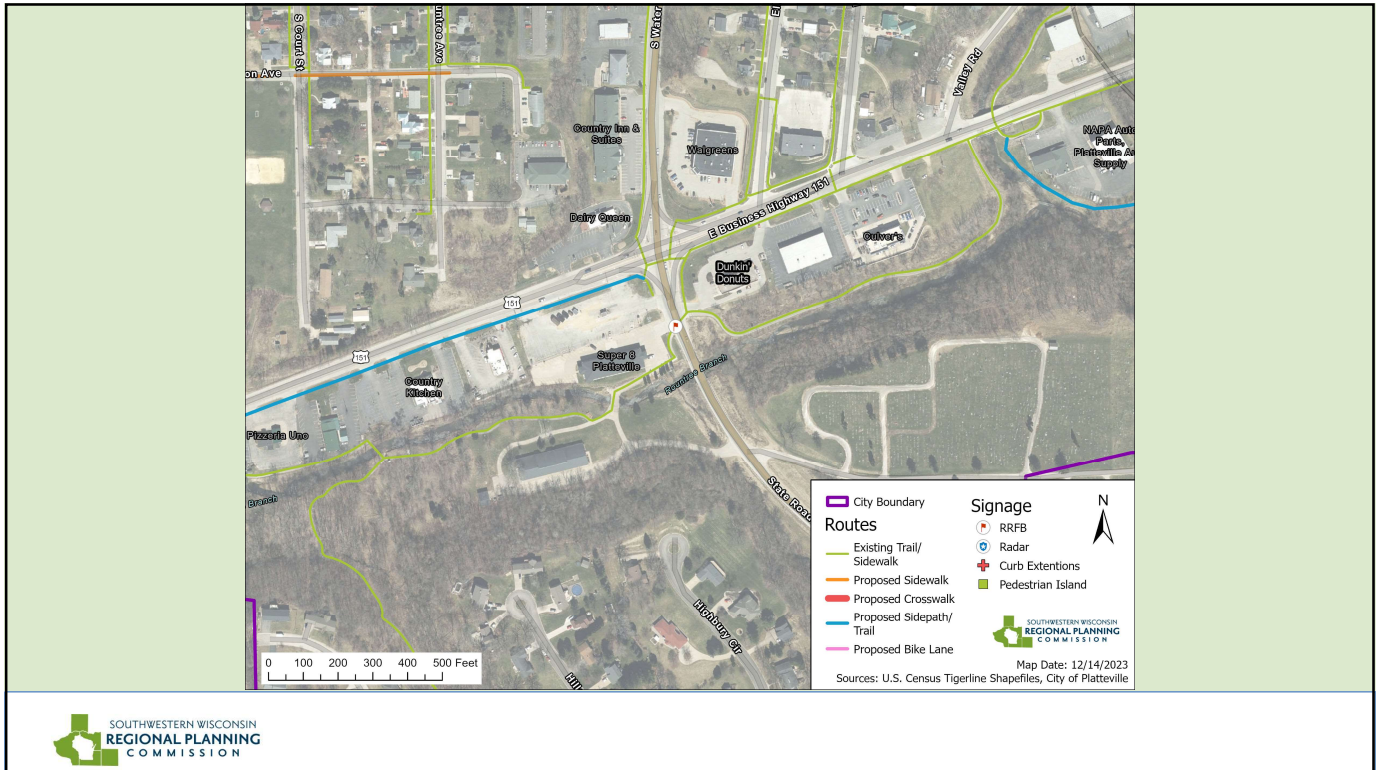
Principal Arterial
Water, Lancaster,
Business 151



Policies – Infrastructure Location

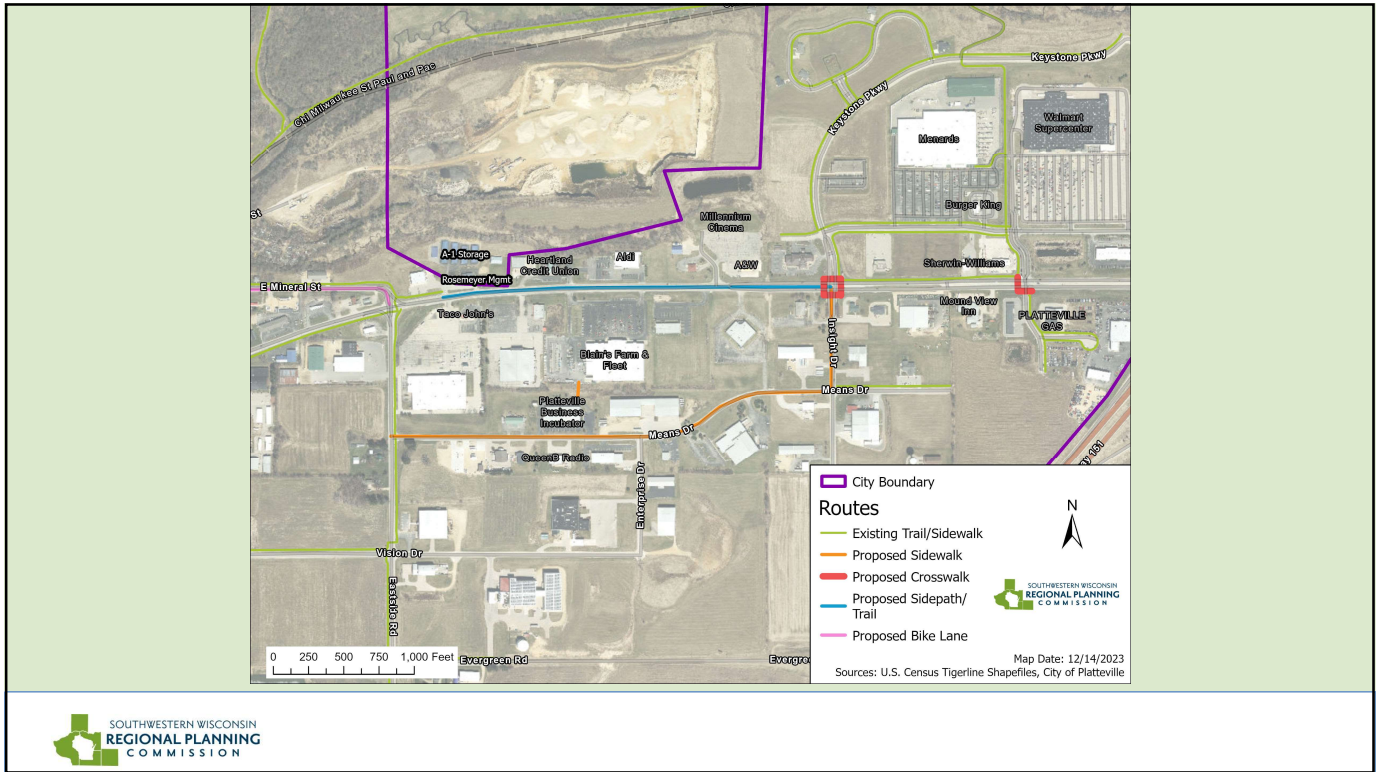
	Local	Collector	Arterial
Bike Sharrow	✓		
Yield Roadway	✓		
Bike Lane	✓	✓	
Sidewalk	✓	✓	✓
Multi-Use Sidepath		✓	✓





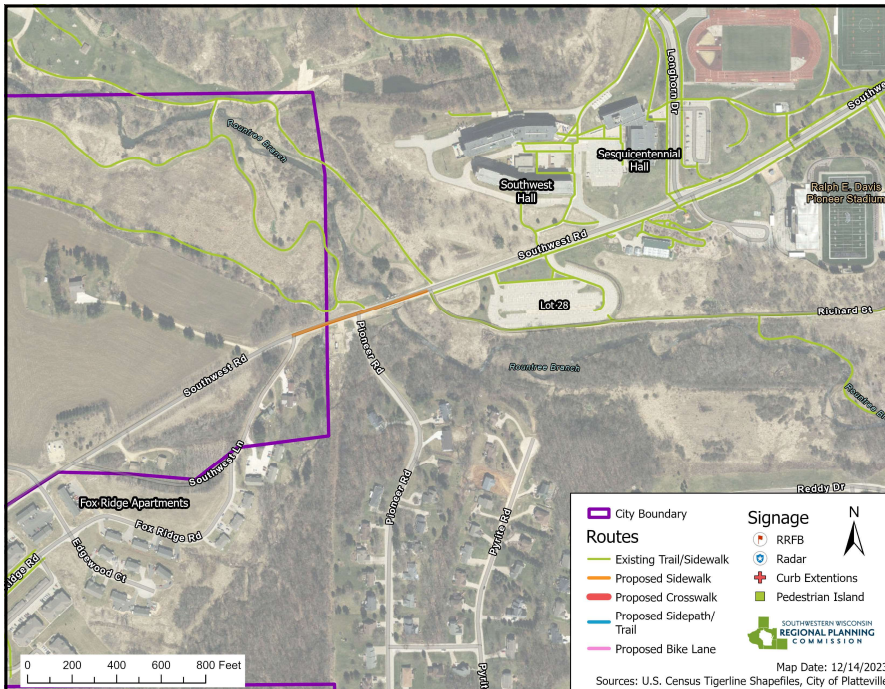
Highway 80 Trail Crossing

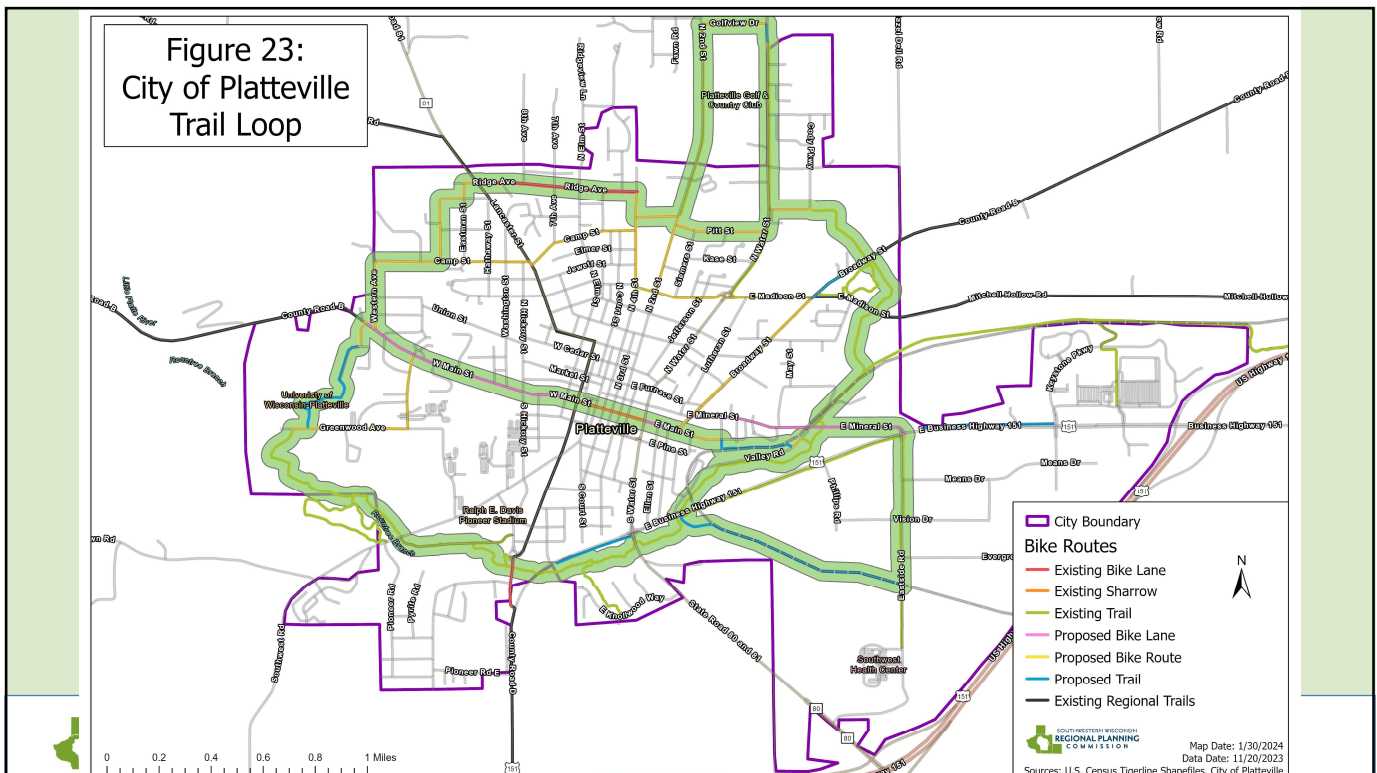
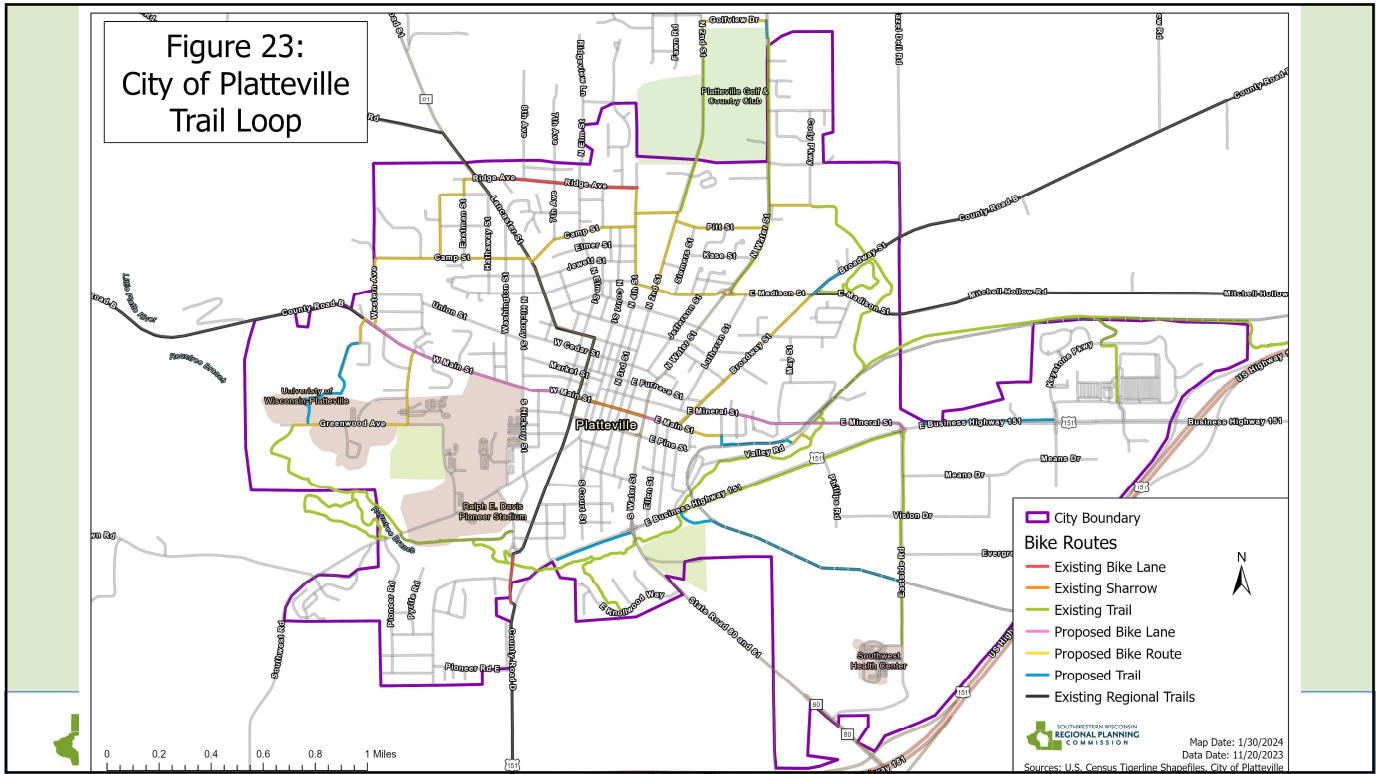
1. Underpass or overpass
2. High visibility crosswalk with RRFB
3. Reroute trail crossing to Business 151 and Highway 80 intersection

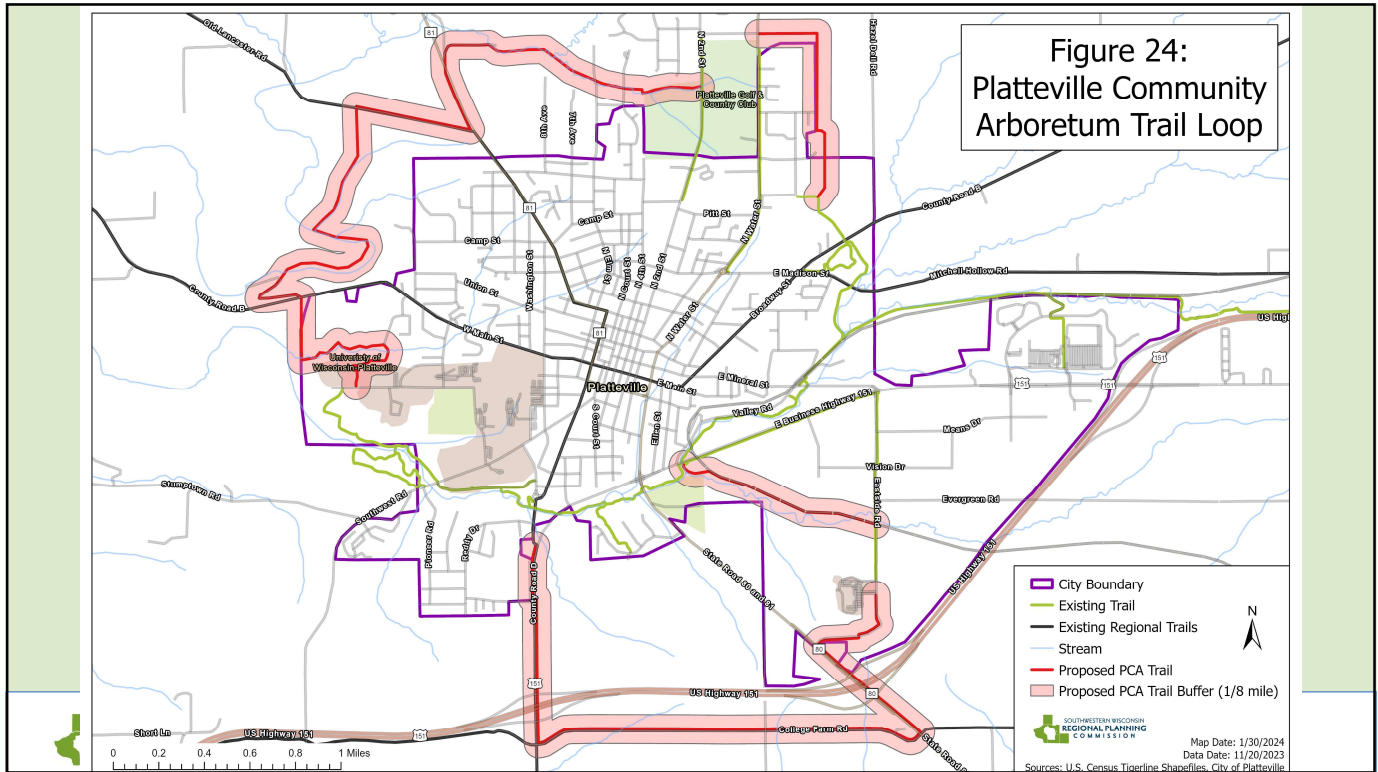


Lancaster Street & Camp Street

- Continental or zebra crosswalk
- RRFB
- Pedestrian island







Interaction with Township

- Business 151 (near Mineral St.)
- Southwest Road (near Southwest Ln.)
- North boundary on Water St. to Golfview Dr.
- Outer trail loop
- Bike route on Golfview

Implementation

