

Public Involvement Meeting

Camp Street

Lancaster Street to Elm Street

City of Platteville

Grant County

Project ID: 5996-01-02

February 29, 2024



Focus of Today's Meeting



Project Location



Project Purpose and Need



Alternatives

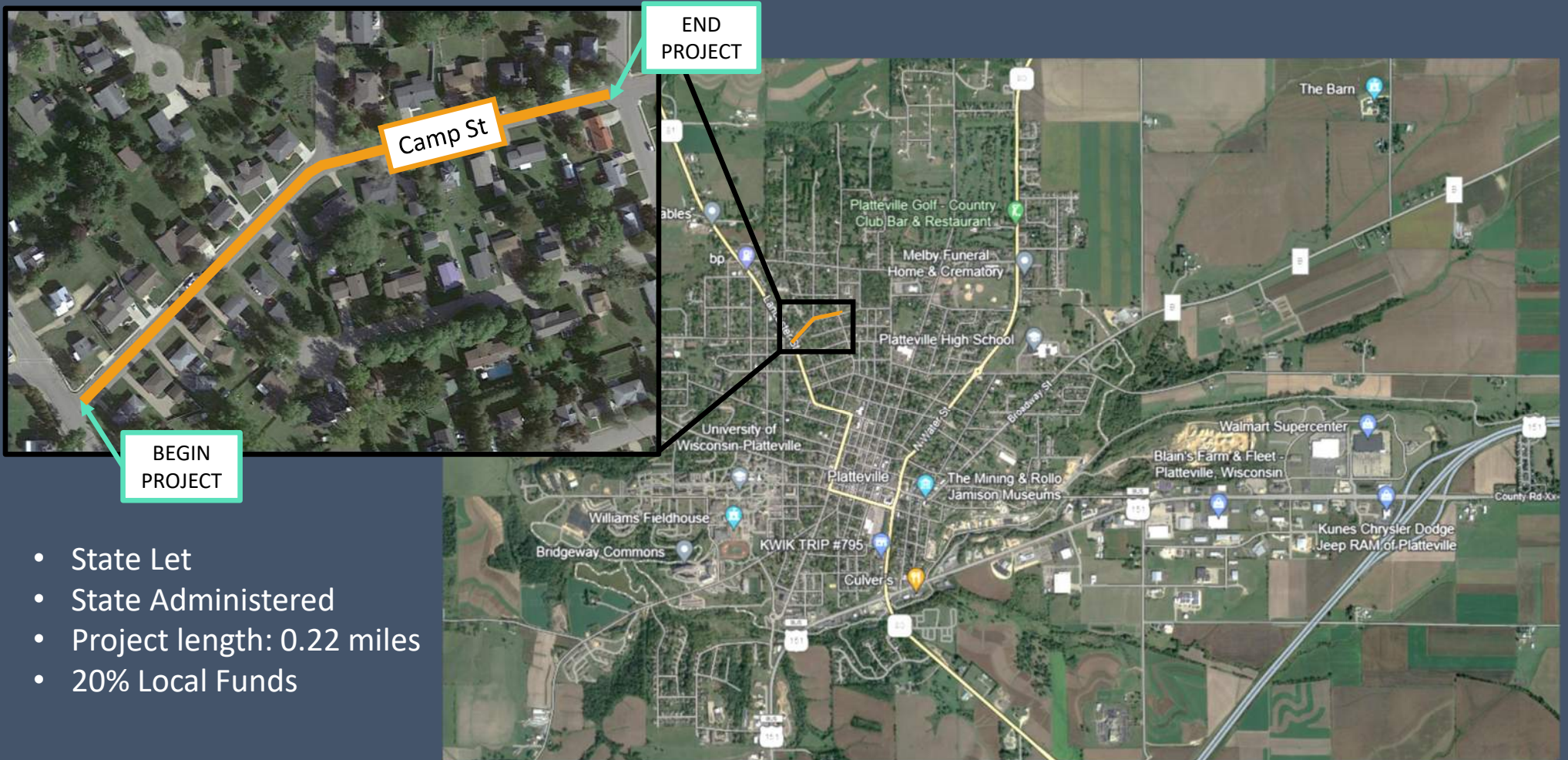


Construction



Project Schedule / Next Steps

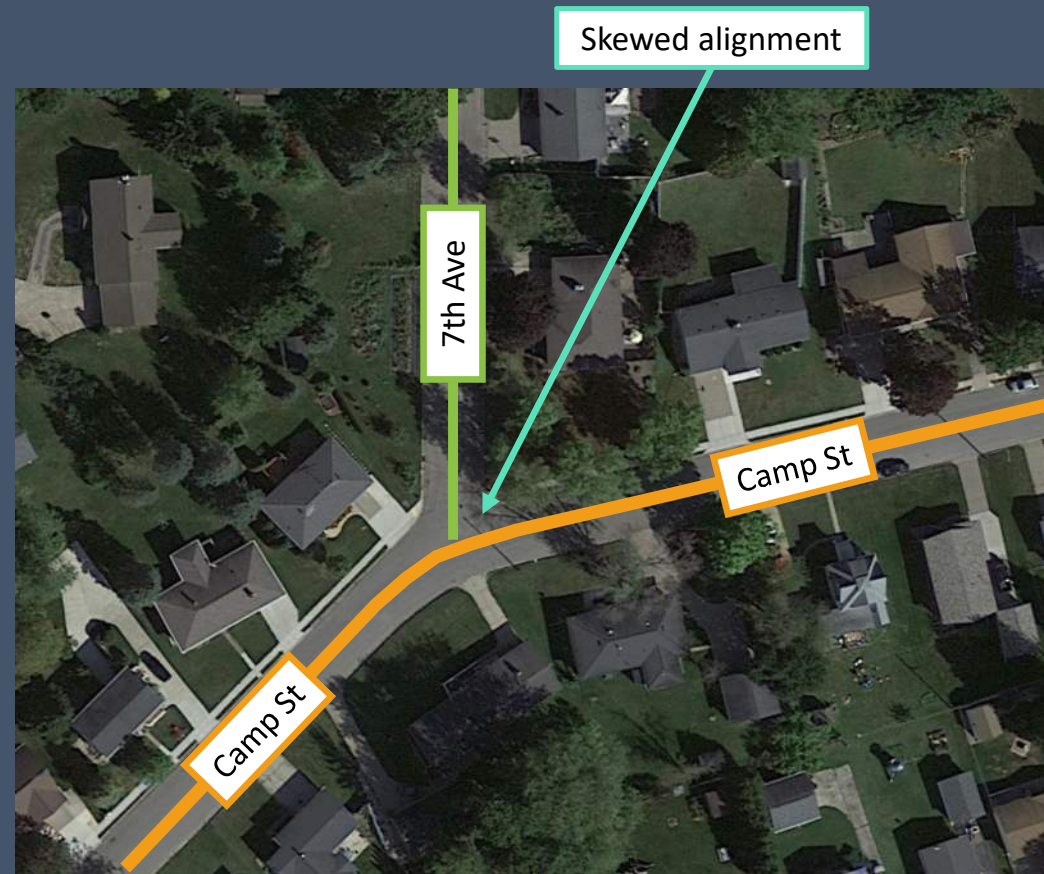
Project Location



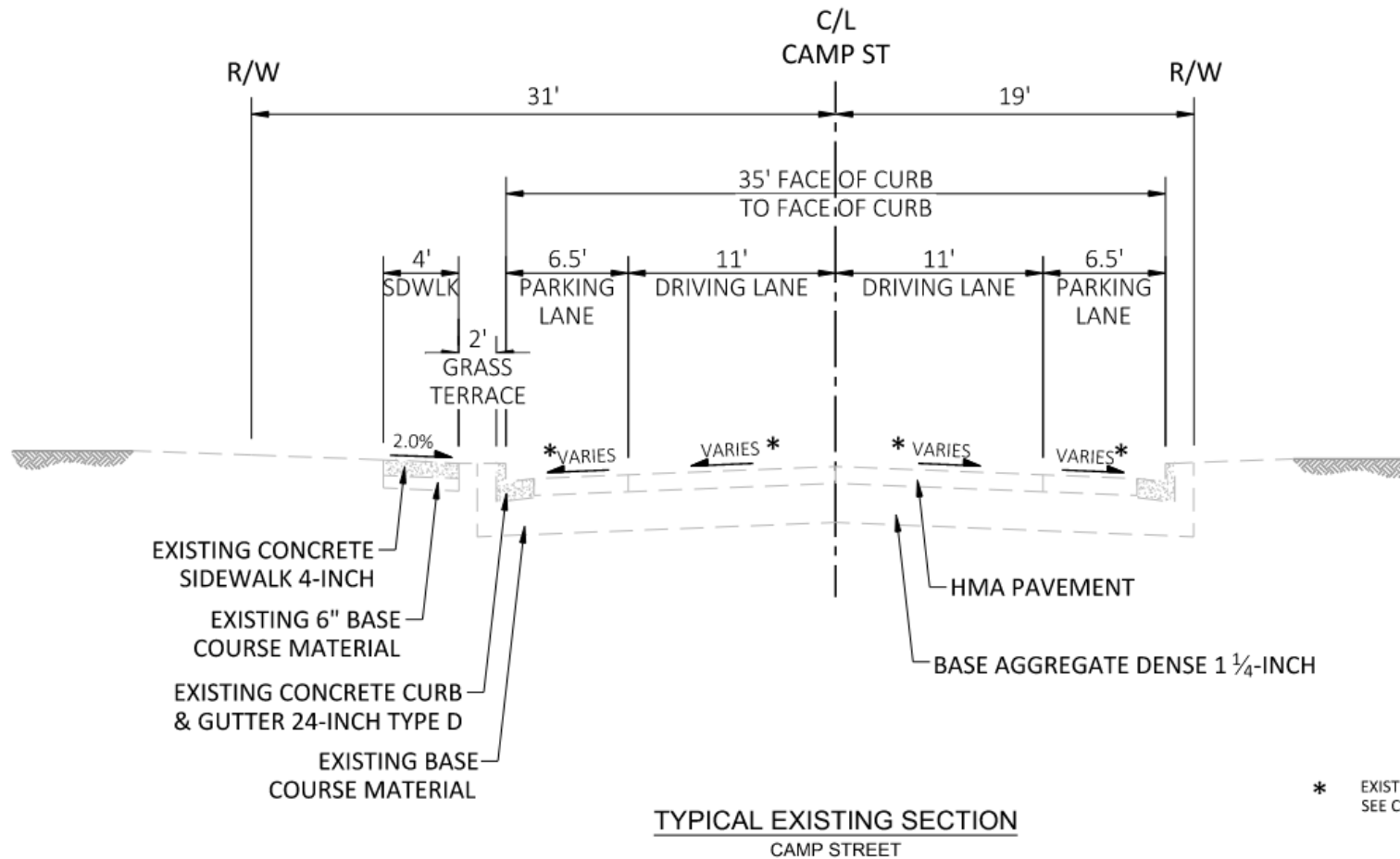
- State Let
- State Administered
- Project length: 0.22 miles
- 20% Local Funds

Purpose and Need

- Wide Roadway
 - Parking lanes both sides
 - Encourages speeding
- 7th Avenue/Camp Street Intersection
 - Skewed alignment
 - Encourages fast left turns from Camp St to 7th Ave



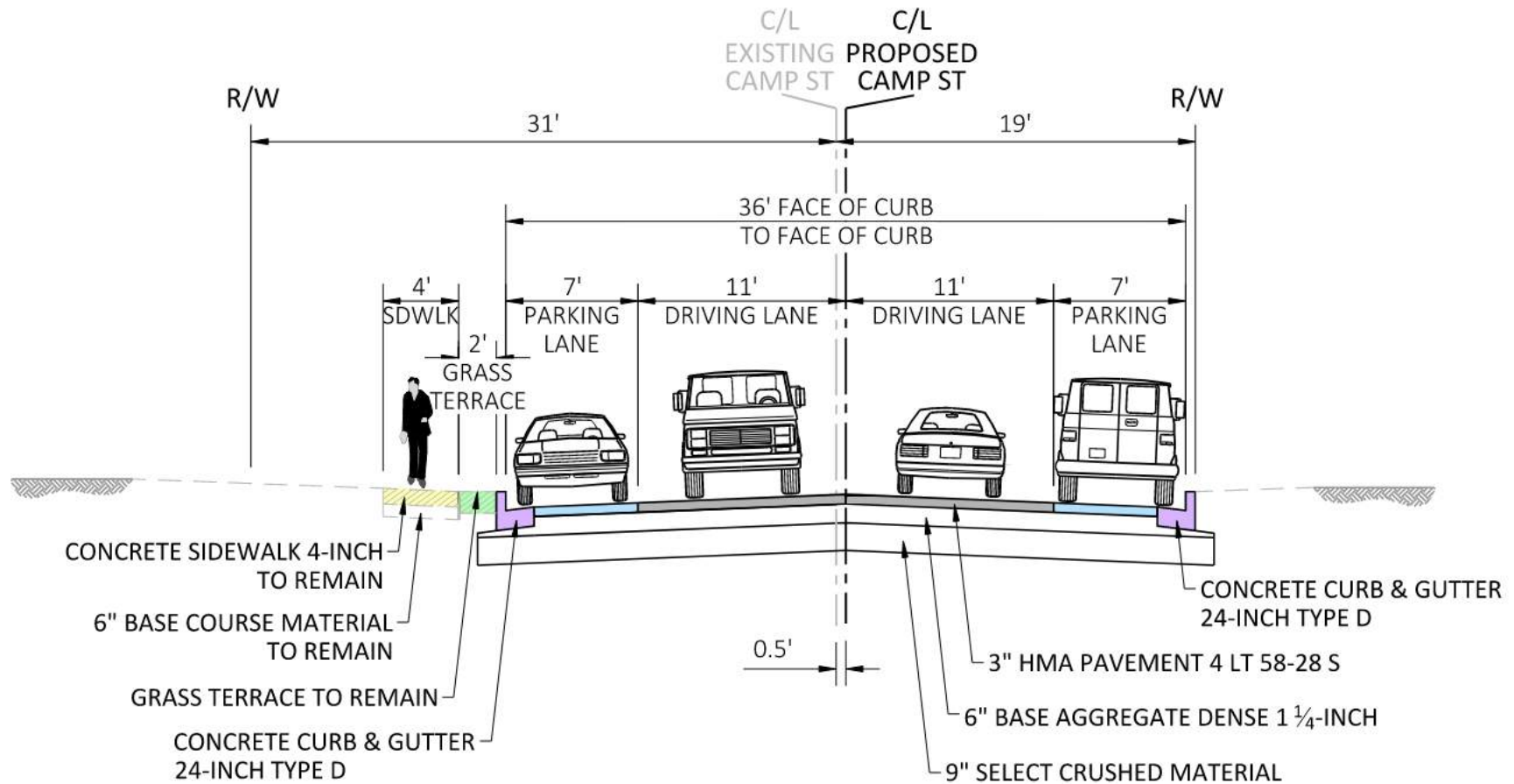
Existing Typical Section



Proposed Improvements

- Pavement
- Curb & Gutter
- Storm Sewer
- Sidewalk & Curb Ramps
 - ADA Compliant
- 7th Avenue/Camp Street intersection realignment
- Driveway approaches
- Sanitary and Water Main are part of 2024 project
(prior to road construction)

Alternative 1: Existing Configuration



TYPICAL FINISHED SECTION: ALTERNATIVE 1 - EXISTING CONFIGURATION

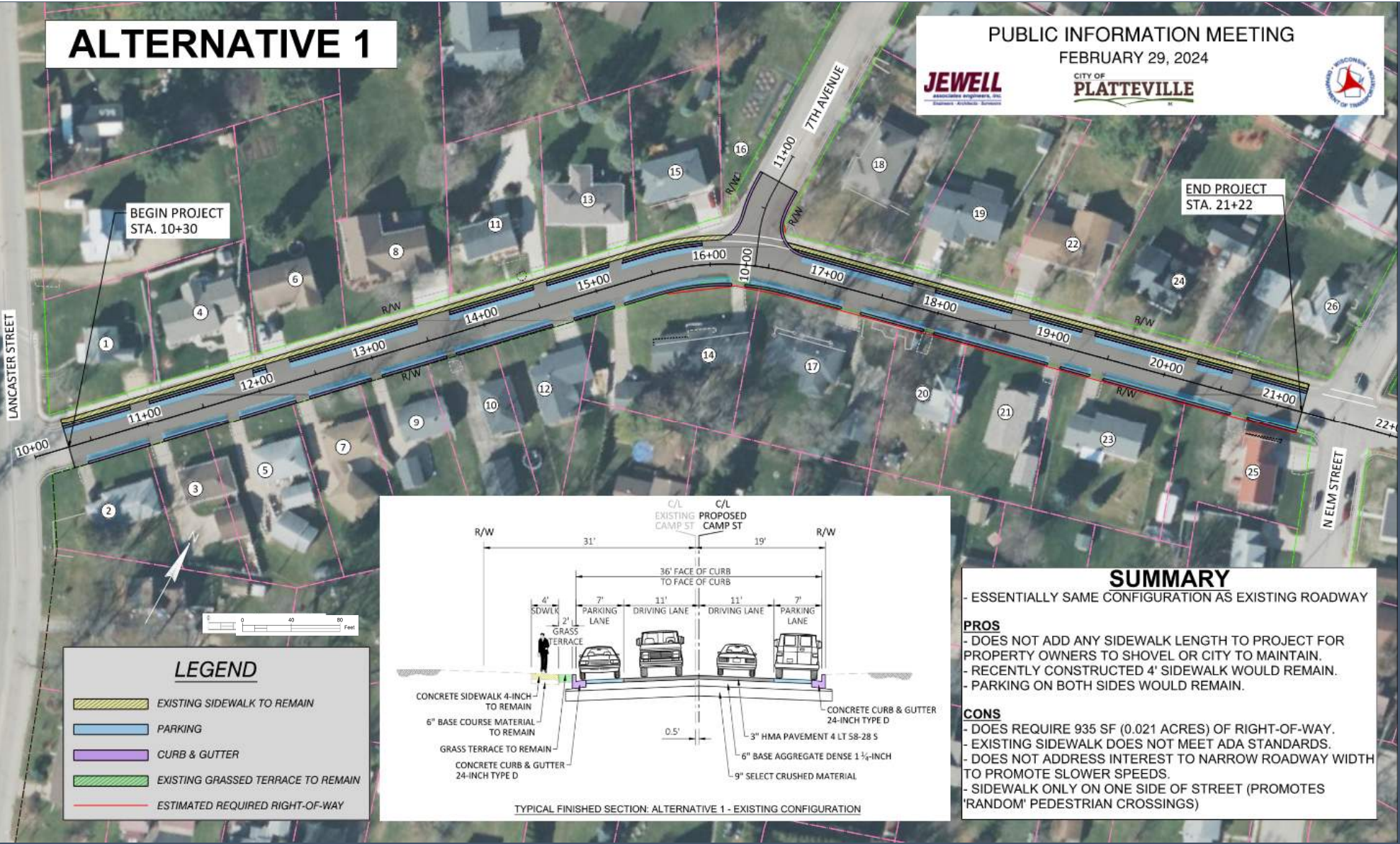
ALTERNATIVE 1

PUBLIC INFORMATION MEETING
FEBRUARY 29, 2024



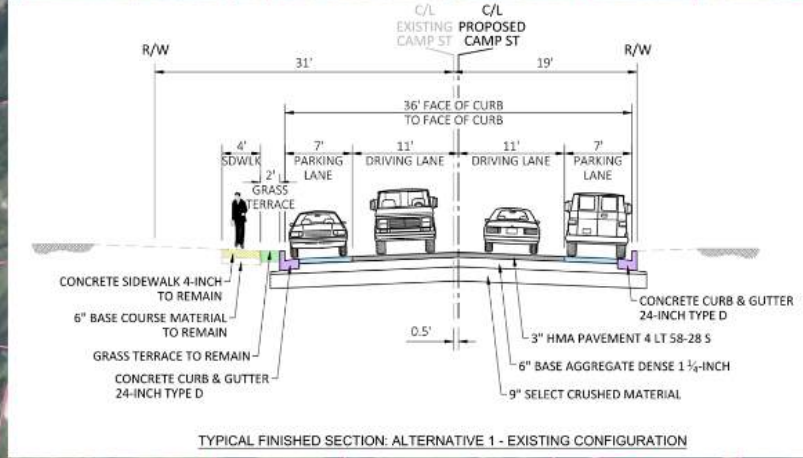
BEGIN PROJECT
STA. 10+30

END PROJECT
STA. 21+22



LEGEND

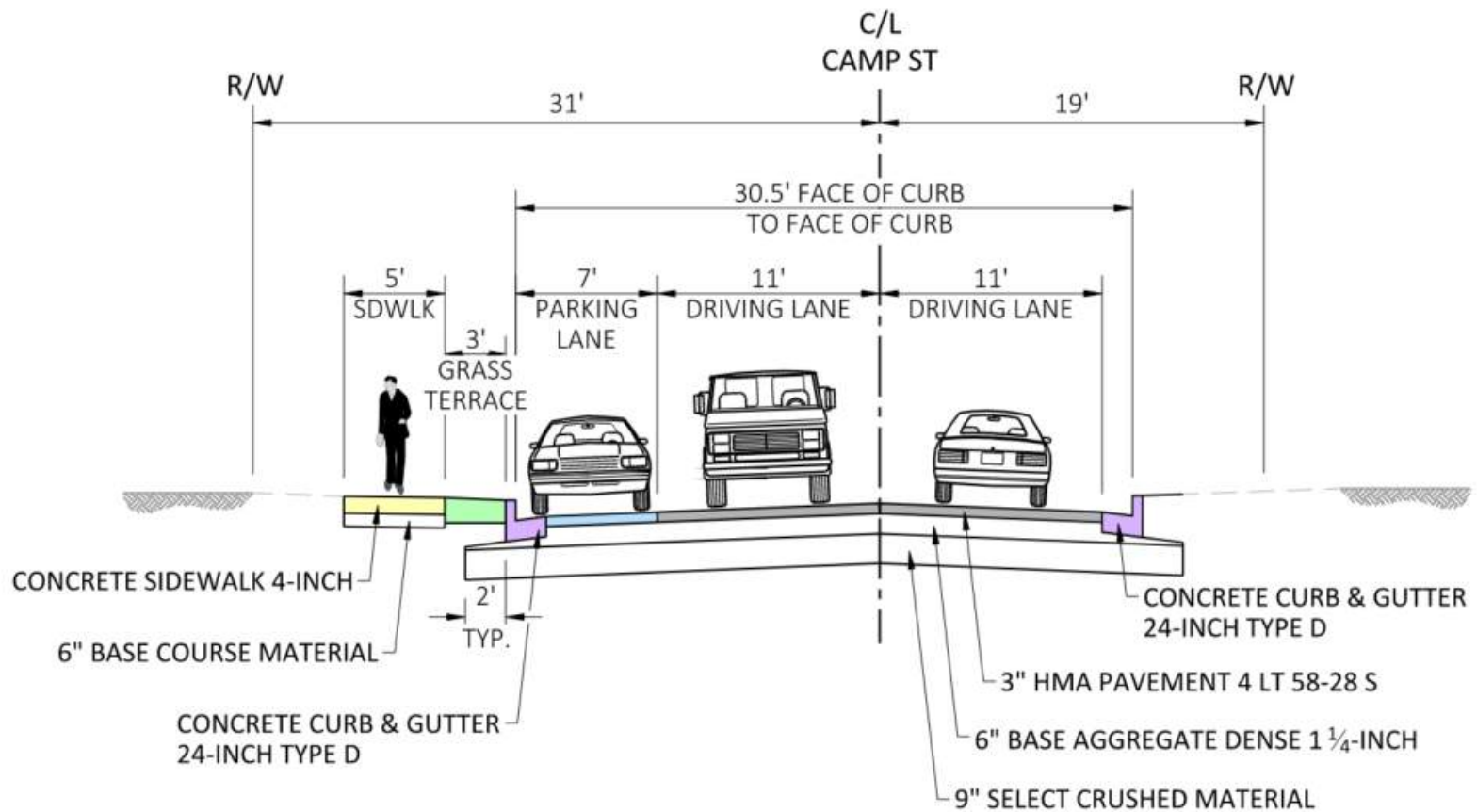
- EXISTING SIDEWALK TO REMAIN
- PARKING
- CURB & GUTTER
- EXISTING GRASSED TERRACE TO REMAIN
- ESTIMATED REQUIRED RIGHT-OF-WAY



SUMMARY

- ESSENTIALLY SAME CONFIGURATION AS EXISTING ROADWAY
- PROS**
- DOES NOT ADD ANY SIDEWALK LENGTH TO PROJECT FOR PROPERTY OWNERS TO SHOVEL OR CITY TO MAINTAIN.
 - RECENTLY CONSTRUCTED 4' SIDEWALK WOULD REMAIN.
 - PARKING ON BOTH SIDES WOULD REMAIN.
- CONS**
- DOES REQUIRE 935 SF (0.021 ACRES) OF RIGHT-OF-WAY.
 - EXISTING SIDEWALK DOES NOT MEET ADA STANDARDS.
 - DOES NOT ADDRESS INTEREST TO NARROW ROADWAY WIDTH TO PROMOTE SLOWER SPEEDS.
 - SIDEWALK ONLY ON ONE SIDE OF STREET (PROMOTES 'RANDOM' PEDESTRIAN CROSSINGS)

Alternative 2: North Parking Only



TYPICAL FINISHED SECTION: ALTERNATIVE 2 - NORTH PARKING ONLY

ALTERNATIVE 2

PUBLIC INFORMATION MEETING
FEBRUARY 29, 2024



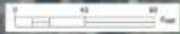
BEGIN PROJECT
STA. 10+00

END PROJECT
STA. 21+50

LANCASTER STREET

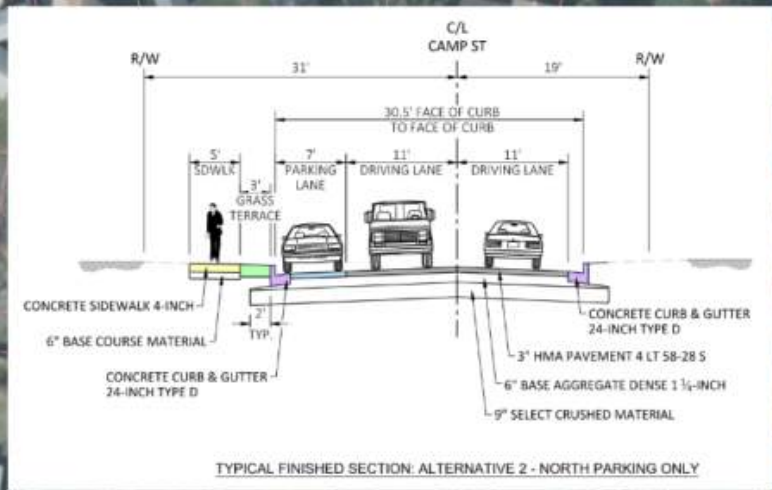
7TH AVENUE

N ELM STREET



LEGEND

- SIDEWALK
- PARKING
- CURB & GUTTER
- GRASSED TERRACE
- ESTIMATED REQUIRED RIGHT-OF-WAY

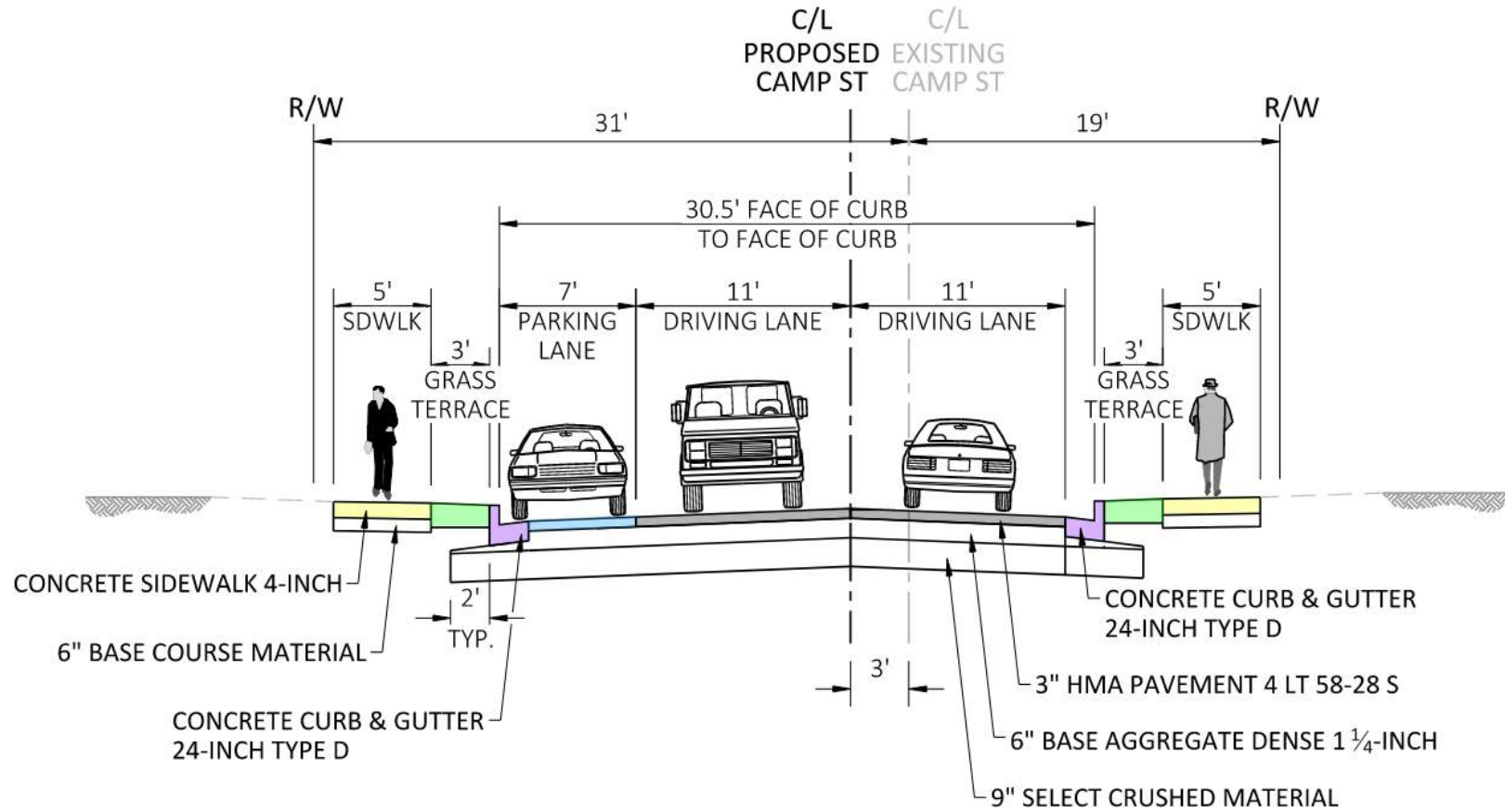


SUMMARY

- NORTH PARKING ONLY

- PROS**
- FITS IN RIGHT-OF-WAY BETTER THAN ALTERNATIVE 1 (60 SF/0.001 ACRES OF RIGHT-OF-WAY REQUIRED).
 - PROVIDES ADA COMPLIANT SIDEWALK ON NORTH SIDE OF STREET.
 - SOME ON-STREET PARKING STILL AVAILABLE.
 - NARROWS ROADWAY 4.5 FT FROM EXISTING CONDITIONS.
- CONS**
- PARKING SPACES CUT IN HALF.
 - RESULTS IN REPLACEMENT OF 1,100' OF NEW SIDEWALK.
 - SIDEWALK ONLY ON ONE SIDE OF STREET (PROMOTES 'RANDOM' PEDESTRIAN CROSSINGS).

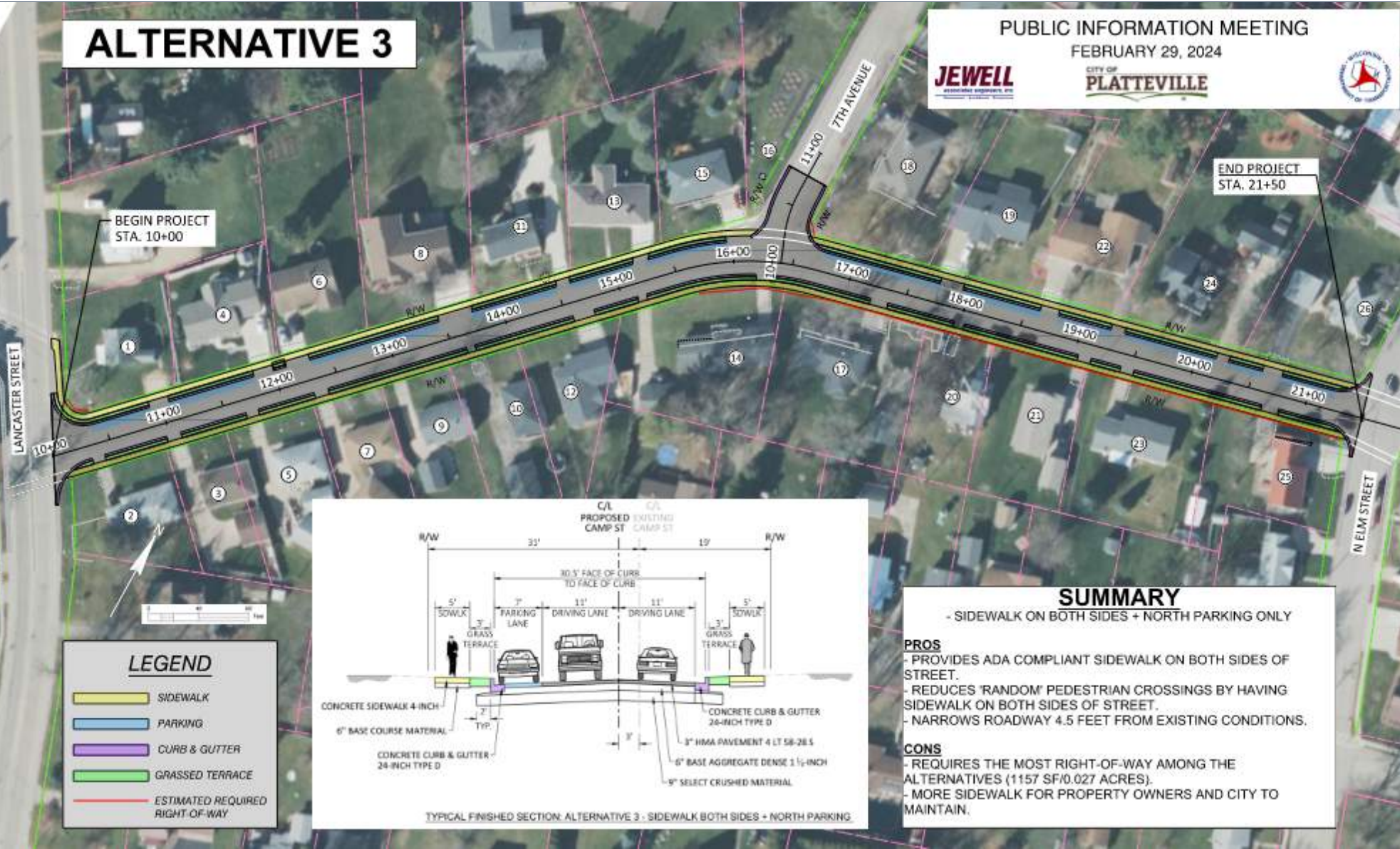
Alternative 3: Sidewalk Both Sides + North Parking



TYPICAL FINISHED SECTION: ALTERNATIVE 3 - SIDEWALK BOTH SIDES + NORTH PARKING

ALTERNATIVE 3

PUBLIC INFORMATION MEETING
FEBRUARY 29, 2024

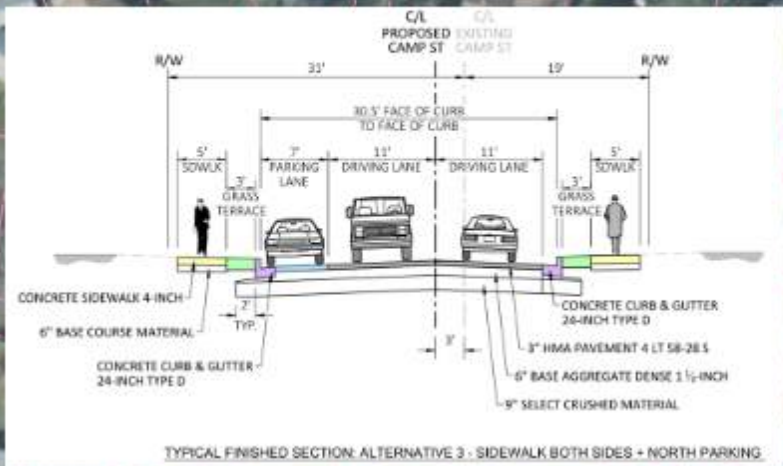


BEGIN PROJECT
STA. 10+00

END PROJECT
STA. 21+50

LEGEND

- SIDEWALK
- PARKING
- CURB & GUTTER
- GRASSED TERRACE
- ESTIMATED REQUIRED RIGHT-OF-WAY



SUMMARY

- SIDEWALK ON BOTH SIDES + NORTH PARKING ONLY
- PROS**
- PROVIDES ADA COMPLIANT SIDEWALK ON BOTH SIDES OF STREET.
 - REDUCES 'RANDOM' PEDESTRIAN CROSSINGS BY HAVING SIDEWALK ON BOTH SIDES OF STREET.
 - NARROWS ROADWAY 4.5 FEET FROM EXISTING CONDITIONS.
- CONS**
- REQUIRES THE MOST RIGHT-OF-WAY AMONG THE ALTERNATIVES (1157 SF/0.027 ACRES).
 - MORE SIDEWALK FOR PROPERTY OWNERS AND CITY TO MAINTAIN.

Selecting Preferred Alternative

- Evaluate Public Input
- Safety for All Users
- Compare Alternative to Purpose and Need
- Determine Impacts
- Cost Analysis
- Communicate Preferred Alternative to Public



Construction

- Traffic During Construction
 - Camp Street closed during construction
 - No official detour is currently planned
 - Alternate routes available
 - Temporary driveway closures
 - Construction staff contact in advance
- Access will be maintained to local property owners during construction
- Project duration = 4 months
- May-September 2025 Construction



Thank you for your time!

Any Questions?



Nathan Lipinski, P.E.

Jewell Engineers Associates, Inc. – Project Manager

1001 Fourier Drive, Suite 104

Madison, WI 53717

608-459-6087

Nathan.Lipinski@jewellassoc.com



Howard Crofoot, P.E.

City of Platteville – Director of Public Works

75 N Bonson Street

Platteville, WI 53818

608-348-9741

crofooth@platteville.org