



City of Platteville – Camp St Public Meeting

July 7th, 2025





Agenda

- Project Contacts
- Project Overview
- Schedule
- Parking and Access
- Q&A

Project Contacts

Josh Vollmer, PE

WisDOT Project Engineer

Josh.Vollmer@klengineering.com

(608) 316-0643

Tim Kaniz

Superintendent – Parisi

tkaniz@walbecgroup.com

(608) 358-3923

Alex Wolfe

Project Manager – Parisi

awolfe@walbecgroup.com

(608) 669-3938

Josh Nelson, PE

Project Manager – WisDOT

Joshua.nelson@dot.wi.gov

(608) 246-2857

Parisi Office

508 S. Nine Mound Road

Verona, WI 53593

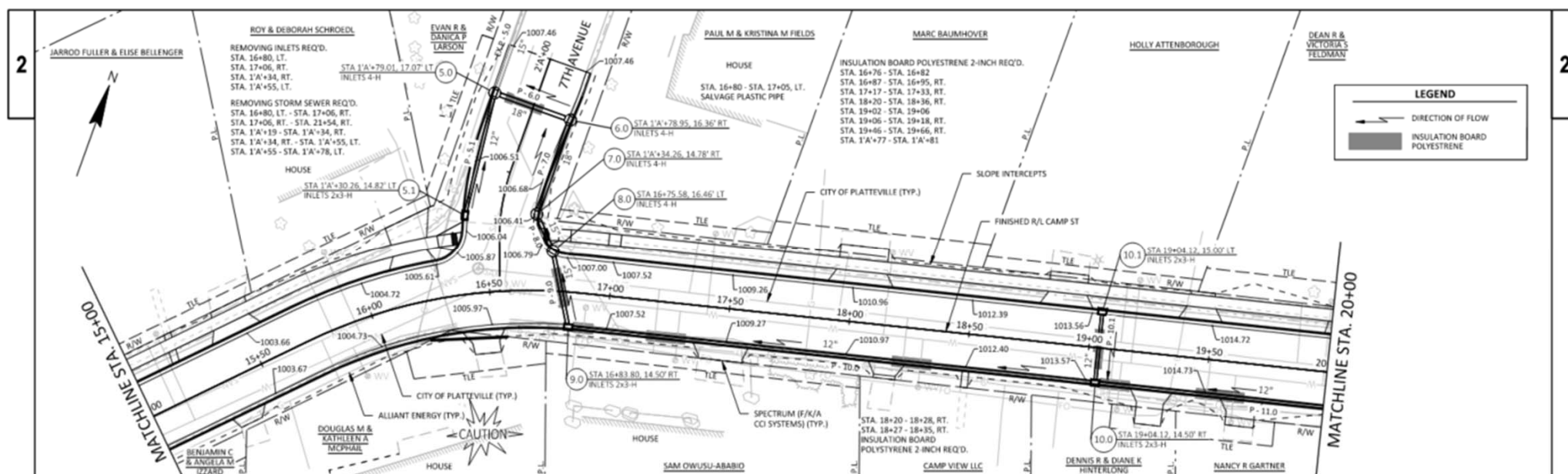
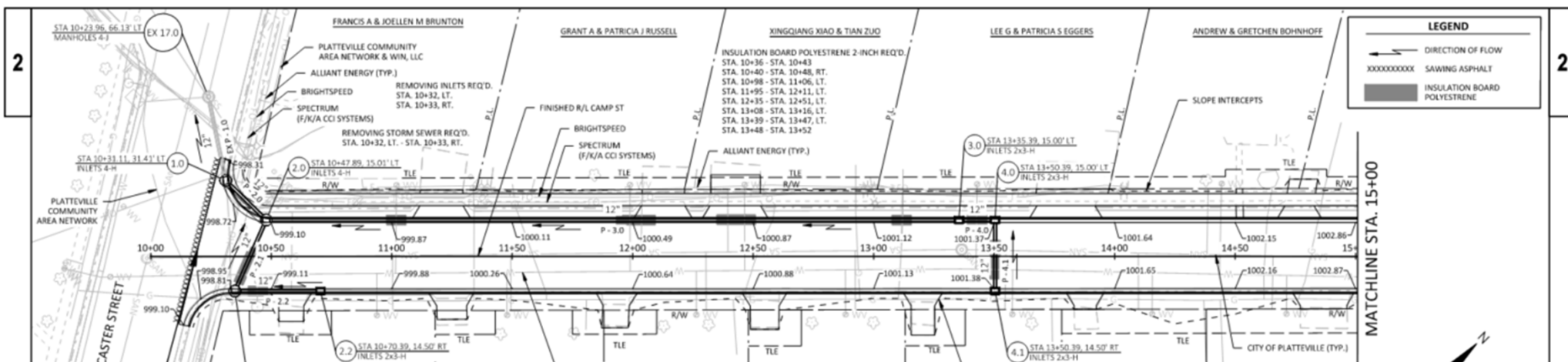
(608) 848-5991

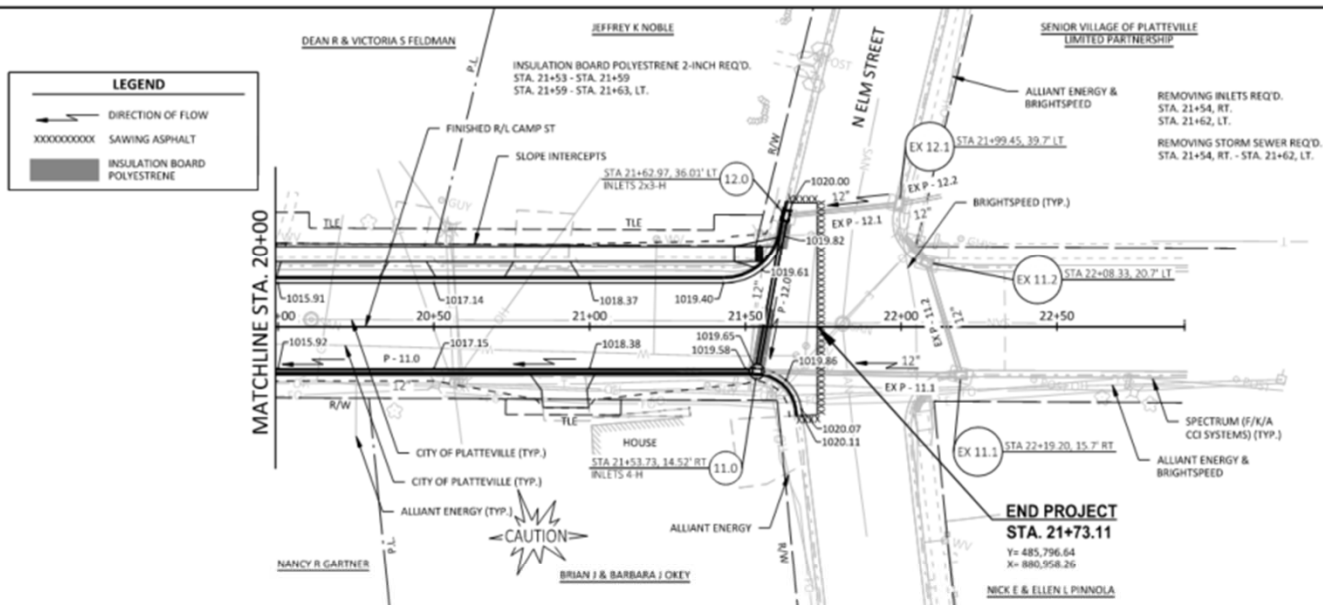


Project Overview

- Project Limits: Camp Street from Lancaster to Elm St
- New Storm Sewer
 - 1,032 LF RCP Pipe
 - 17 Storm Water Inlets
- Remove and Replace
 - Concrete Sidewalk (4' wide current to 5' wide new)
 - Concrete Curb & Gutter
 - Concrete Driveway Aprons
 - Asphalt Roadway







Project Schedule

- Construction to begin week of July 14th.
- Project to be completed by September 30th.
- Project Sequence
 - Storm Sewer Installation (7/14 to 7/31)
 - Remove Existing Sidewalk, Curb & Gutter, Asphalt (7/28 to 8/8)
 - Rebuild Road Base and Sidewalk Base (8/11 to 8/15)
 - Pour New Sidewalk, Curb & Gutter, and Driveway Aprons (8/18 to 8/29)
 - Asphalt Paving, Rebuilding Terrace, Pavement Markings and Sign Installation (9/1 to 9/30)

Parking and Access

- Road Closed to Through Traffic
- Starting Monday July 14th NO Street Parking
 - No street parking will continue until concrete is poured, then ONLY street parking until concrete is cured and you can get back into driveway, then back to NO street parking
- Garbage collection will not be changed, weekly on Tuesday
- We will give you a minimum 48 hours notice before restricting access to your driveway
- Temporary sidewalk matting will be installed on the north side of the current sidewalk



A photograph of construction workers operating a large paver machine on a road. The machine is green and black, and the workers are wearing high-visibility yellow and orange safety vests. The scene is set outdoors under a bright, cloudy sky. A green rectangular overlay with the text "Q&A" is positioned in the center of the image.

Q&A